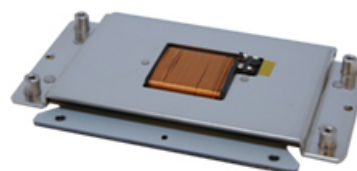


DVF-D3WL01

2023/07/20

Outline



The DDA (Direct Drive Actuator) series is a tactile feedback device that efficiently utilizes electromagnetic attraction and spring reaction. It drives the housing of displays or other devices in the Z-axis direction and reproduces vibrations at the fingertips.

[Features]

- Thinner design.
- Integration of the mechanical structure, including the plate spring, on the actuator side, contributing to reduced design workload for customers.
- Suitable for automotive applications.

Specifications

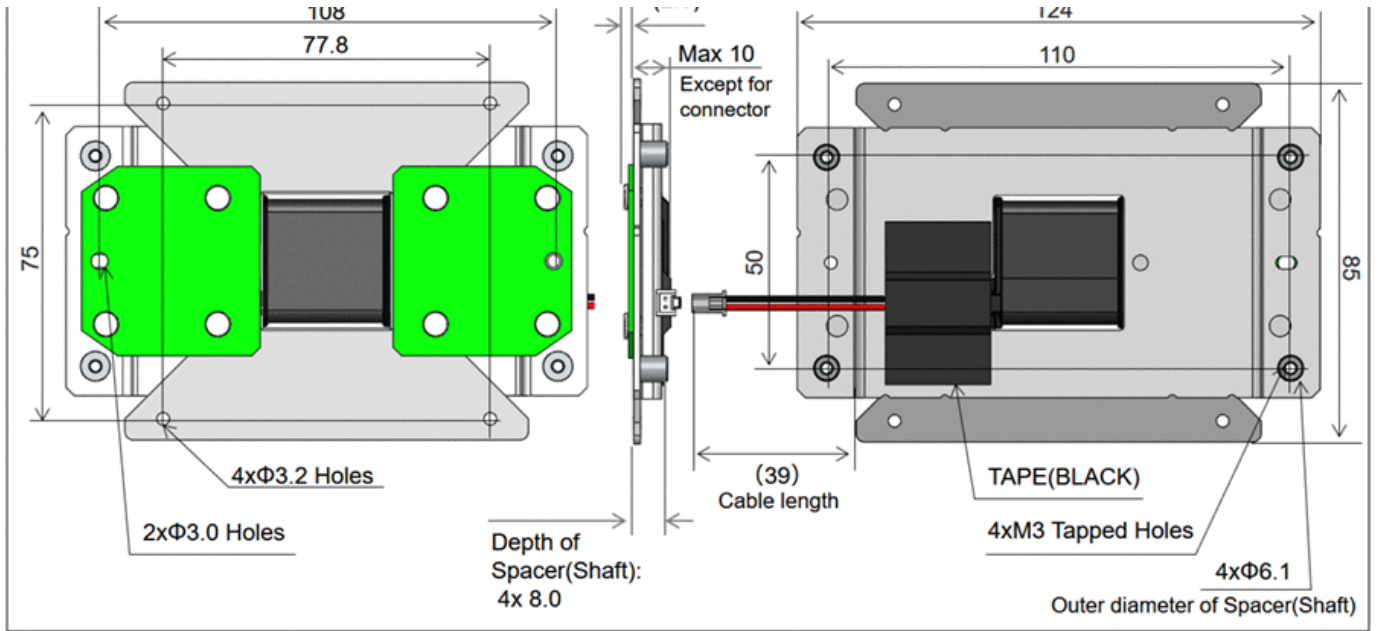
Type	DDA
Outline dimensions	124 x 85 x 12.5 mm
Rated input voltage [Vrms]	12.0
Terminal resistance [Ω]	2.4
Response time [msec]	≦8

Dimensions

Outline, mounting dimensions			
Front side		Back side	unit(mm)
124	85 (2.5)	12.5	

DVF-D3WL01

2023/07/20

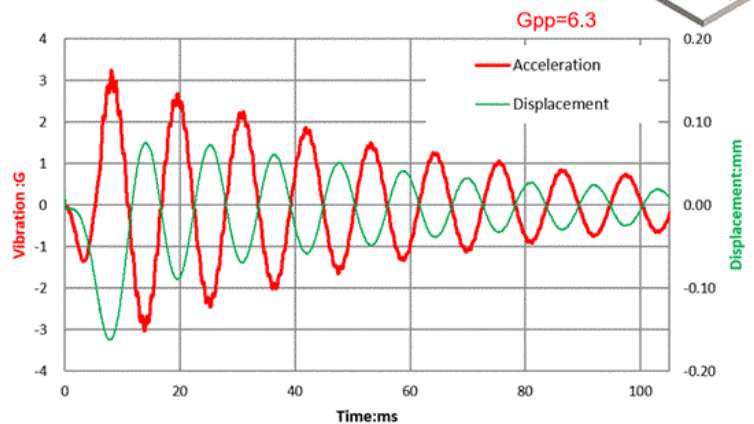
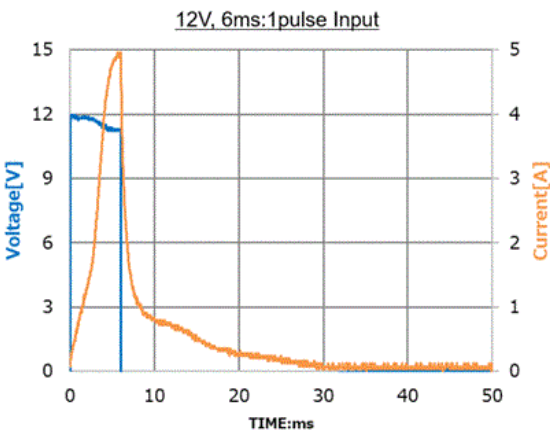
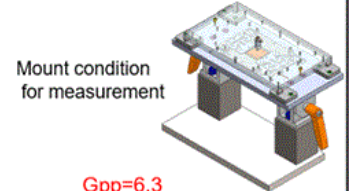


Recommended to use appropriate M3-screws for DDA installation(Torque \geq 0.6N·m).

Electric Characteristics

Electrical Characteristics

<800g AI-Panel-JIG measurement results>



•Measure condition: DDA-P is mounted 800g dummy weight panel on moving object side, and 7kg weight base jig on fixed side. Mounted angle: 0 degree(Horizontal), add damper on panel 4 corners.

•本資料のすべてのデータと数値は代表値であり、保証値ではありません。
 / Any and all data and values given in this document are typical value, not guaranteed values.

•仕様は性能改善のため予告なく変更されることがあります。
 / Specifications are subject to be changed without notice for improvement purposes.

DVF-D3WL01

2023/07/20

