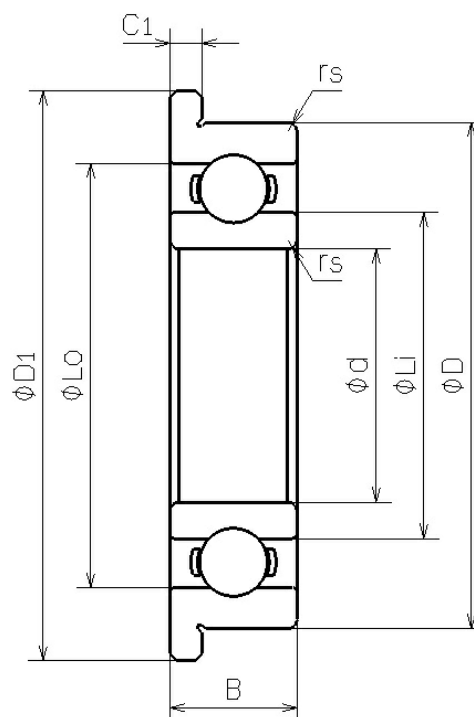


DDLDF-630

2023/03/22

Outline



NMB Parts No.	DDLDF-630
Metric or Inch	Metric
ISO/JIS	F673
Material of Rings	Stainless Steel
Ring Type	[Radial] Flanged
Inner Diameter (d) [mm]	3.000
Outer Diameter (D) [mm]	6.000
Width	

DDLDF-630

2023/03/22

(B) [mm]	2.000
Chamfer (rs min) [mm]	0.080
Flange Diameter (D1) [mm]	7.200
Flange Width (C1) [mm]	0.600
Reference Diameter Outer (Lo) [mm]	4.930
Reference Diameter Inner (Li) [mm]	3.800
Ball Size (DW) [mm]	0.7938
Ball Complement (Z)	8
Dynamic Load Rating (Cr) [N]	206
Static Load Rating (Cor) [N]	73
Inner Diameter (d) [in]	0.1181
Outer Diameter (D) [in]	0.2362
Flange Diameter (D1) [in]	0.2835
Flange Width (C1) [in]	0.0236