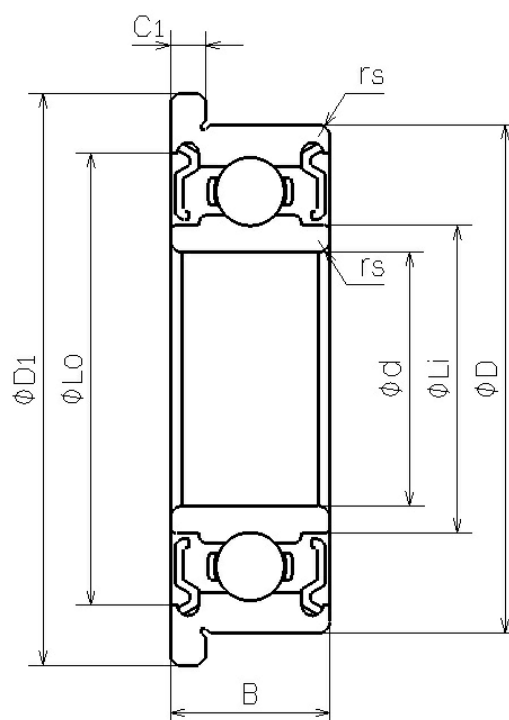


## DDLDF-950ZZ

2023/03/22

## Outline



NMB Parts No.	DDLDF-950ZZ
Metric or Inch	Metric
ISO/JIS	-
Material of Rings	Stainless Steel
Ring Type	[Radial] Flanged
Inner Diameter (d) [mm]	5.000
Outer Diameter (D) [mm]	9.000
Width	

## DDLDF-950ZZ

2023/03/22

(B) [mm]	3.000
Chamfer (rs min) [mm]	0.100
Flange Diameter (D1) [mm]	10.200
Flange Width (C1) [mm]	0.600
Reference Diameter Outer (Lo) [mm]	8.040
Reference Diameter Inner (Li) [mm]	6.000
Ball Size (DW) [mm]	1.1906
Ball Complement (Z)	10
Dynamic Load Rating (Cr) [N]	495
Static Load Rating (Cor) [N]	207
Inner Diameter (d) [in]	0.1969
Outer Diameter (D) [in]	0.3543
Flange Diameter (D1) [in]	0.4016
Flange Width (C1) [in]	0.0236