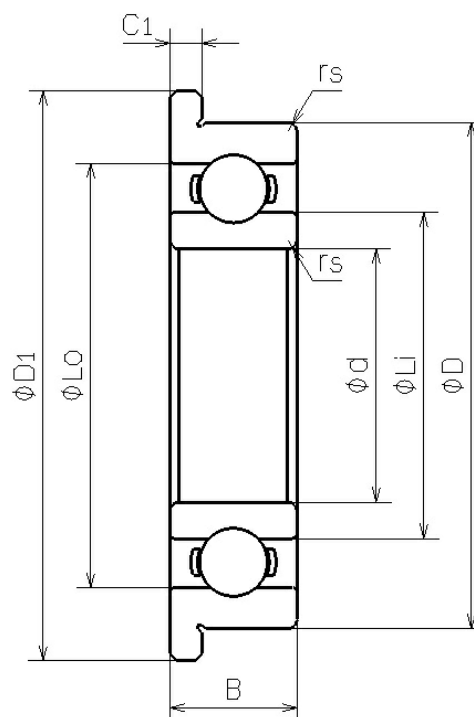


DDRF-1450

2023/03/22

Outline



| | |
|-------------------------------|------------------|
| NMB Parts No. | DDRF-1450 |
| Metric or Inch | Metric |
| ISO/JIS | F605 |
| Material of Rings | Stainless Steel |
| Ring Type | [Radial] Flanged |
| Inner Diameter (d) [mm] | 5.000 |
| Outer Diameter (D) [mm] | 14.000 |
| Width | |

DDRF-1450

2023/03/22

| | |
|------------------------------------------|--------|
| (B) [mm] | 5.000 |
| Chamfer (rs min) [mm] | 0.200 |
| Flange Diameter (D1) [mm] | 16.000 |
| Flange Width (C1) [mm] | 1.000 |
| Reference Diameter Outer (Lo) [mm] | 12.140 |
| Reference Diameter Inner (Li) [mm] | 6.880 |
| Ball Size (DW) [mm] | 2.3813 |
| Ball Complement (Z) | 7 |
| Dynamic Load Rating (Cr) [N] | 1329 |
| Static Load Rating (Cor) [N] | 508 |
| Inner Diameter (d) [in] | 0.1969 |
| Outer Diameter (D) [in] | 0.5512 |
| Flange Diameter (D1) [in] | 0.6299 |
| Flange Width (C1) [in] | 0.0394 |