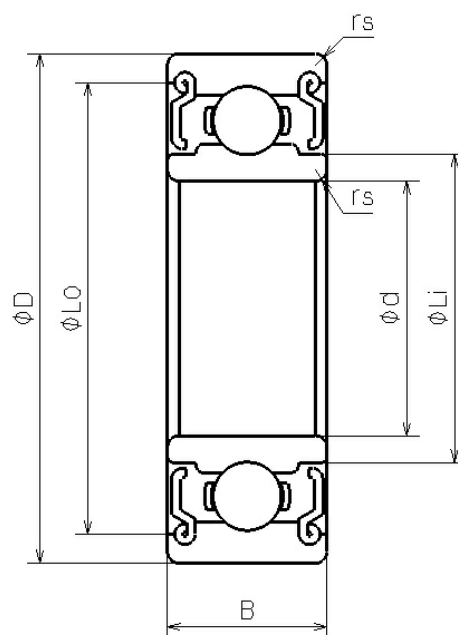


L-2112DD

2023/03/22

Outline



NMB Parts No.	L-2112DD
Metric or Inch	Metric
ISO/JIS	6801DD
Material of Rings	Chromium Steel
Ring Type	[Radial] Standard
Inner Diameter (d) [mm]	12.000
Outer Diameter (D) [mm]	21.000
Width	

L-2112DD

2023/03/22

(B) [mm]	5.000
Chamfer (rs min) [mm]	0.300
Reference Diameter Outer (Lo) [mm]	19.220
Reference Diameter Inner (Li) [mm]	14.400
Ball Size (DW) [mm]	2.3813
Ball Complement (Z)	12
Dynamic Load Rating (Cr) [N]	1917
Static Load Rating (Cor) [N]	1042
Inner Diameter (d) [in]	0.4724
Outer Diameter (D) [in]	0.8268