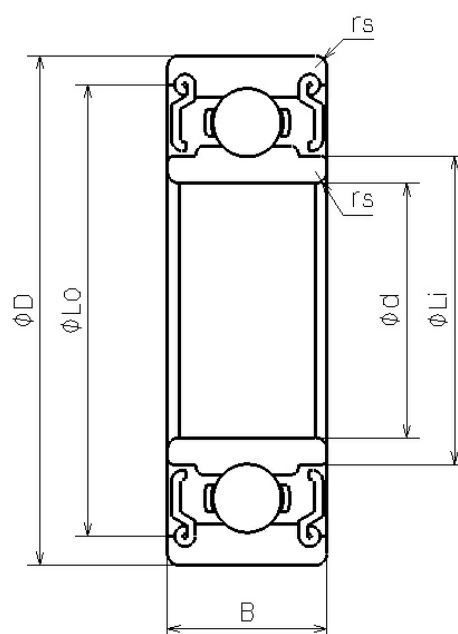


RI-1214ZZ

2023/03/22

Outline



NMB Parts No.	RI-1214ZZ
Metric or Inch	Inch
ISO/JIS	-
Material of Rings	Chromium Steel
Ring Type	[Radial] Standard
Inner Diameter (d) [mm]	6.350
Outer Diameter (D) [mm]	19.050
Width	

RI-1214ZZ

2023/03/22

(B) [mm]	7.142
Chamfer (rs min) [mm]	0.410
Reference Diameter Outer (Lo) [mm]	16.280
Reference Diameter Inner (Li) [mm]	8.630
Ball Size (DW) [mm]	3.5719
Ball Complement (Z)	6
Dynamic Load Rating (Cr) [N]	2411
Static Load Rating (Cor) [N]	912
Inner Diameter (d) [in]	0.2500
Outer Diameter (D) [in]	0.7500