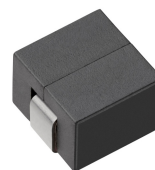


CFS-676850NX

RoHS AEC-Q200 Shielded structure

2023/03/22

Outline



High current inductor of DC/DC converter

Features

1. High saturation current noise filter
2. Produces low heat due to low DC resistance
3. Low Profile Product

Applications

For DC-DC converter power supply(ABS/ESP, Server).

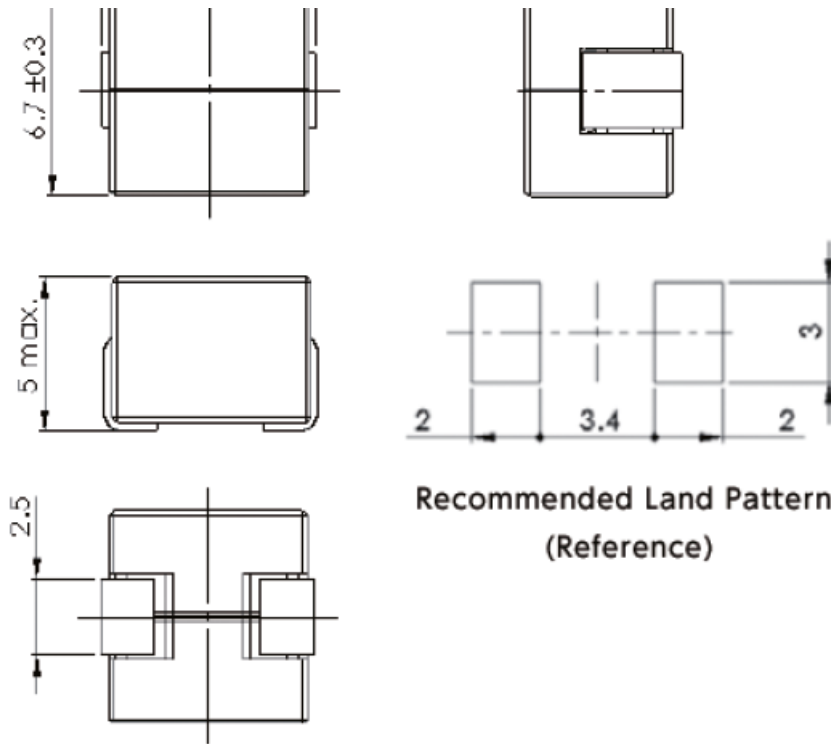
Dimensions



CFS-676850NX

RoHS AEC-Q200 Shielded structure

2023/03/22



mm

Specifications

Size(W) [mm]	Size(D) [mm]	Length(H) Max [mm]	Stamp	Inductance [micro H]	Inductance Tolerance lower limit [%]	Inductance Tolerance upper limit [%]
6.7	6.7	5.0	R15	0.15	-20	20

Stamp	Inductance Test Freq. [KHz]	DC Resistance [m OHM]	Rated DC CurrentL=-20 percent [A]	Rated DC Current deltaT=40K [A]
R15	100	0.22	30.00	40.00

Package Dimension

Embossed carrier tape

CFS-676850NX

RoHS AEC-Q200 Shielded structure

2023/03/22

