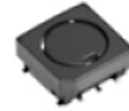


# C5-T3R1

RoHS AEC-Q200

2023/03/22

## Outline

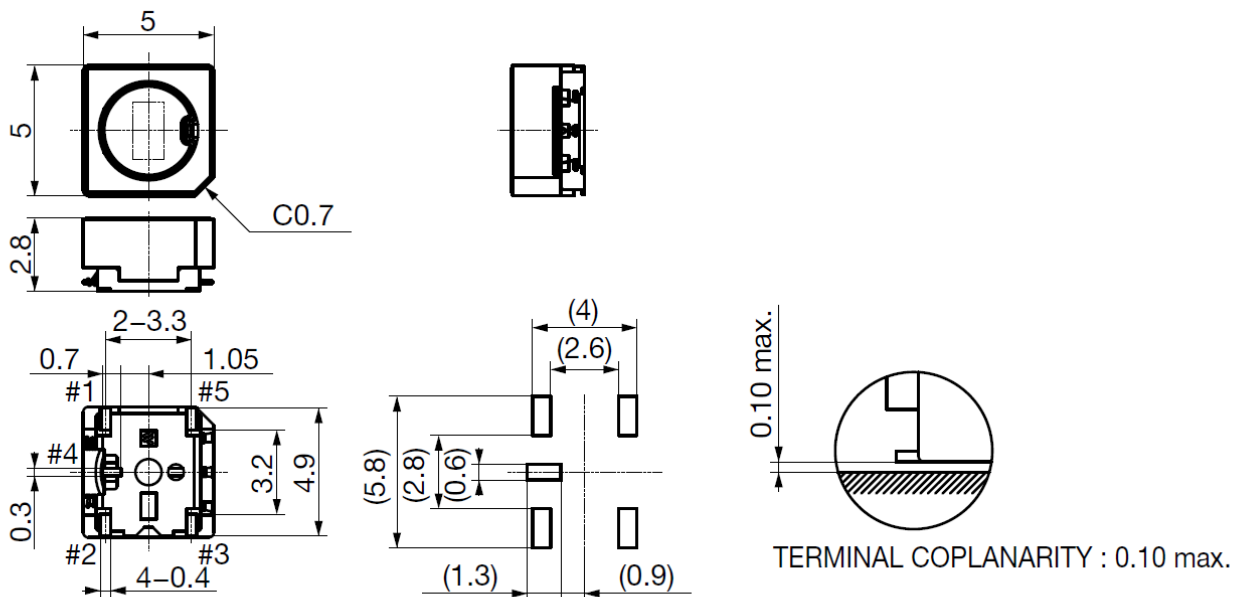


Used for DC/DC converters and transformers for switched-mode power supplies.

## Features

- 1, It is compact, low-profile and suitable for portable equipment.
- 2, A closed magnetic circuit structure is adopted to reduce electromagnetic interference.

## Dimensions



Recommended land pattern

Dimensions

... ..

# C5-T3R1

RoHS AEC-Q200

2023/03/22

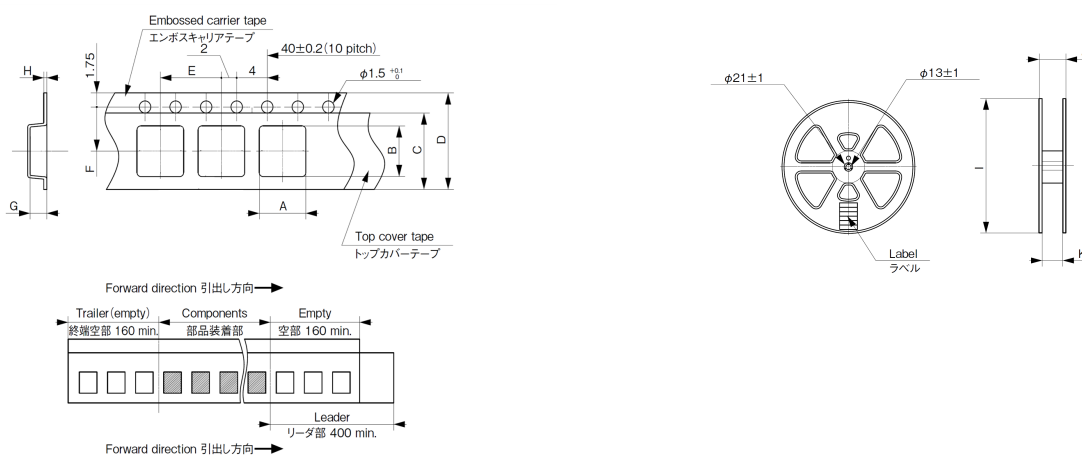
Unit

mm

## Specifications

Operating Frequency lower limit [KHz]	Operating Frequency upper limit [KHz]	Power capacity [W]
10	1000	1.2

## Package Dimension



Q'ty [pcs./reel]	Tape Dimensions A [mm]	Tape Dimensions B [mm]	Tape Dimensions C a [mm]	Tape Dimensions C b [mm]	Tape Dimensions D a [mm]	Tape Dimensions D b [mm]
2000	5.5	5.5	9.5	0.2	12	0.3

Tape Dimensions E a [mm]	Tape Dimensions E b [mm]	Tape Dimensions F a [mm]	Tape Dimensions F b [mm]	Tape Dimensions G [mm]	Tape Dimensions H a [mm]	Tape Dimensions H b [mm]
8	0.1	5.5	0.1	3.2	0.4	0.10

# C5-T3R1

RoHS AEC-Q200

2023/03/22

	U.1	J.2	U.1	J.2	U.7	U.10
Reel Dimensions I a [mm]	Reel Dimensions I b [mm]	Reel Dimensions J a [mm]	Reel Dimensions J b [mm]	Reel Dimensions K a [mm]	Reel Dimensions K b [mm]	
φ 330	φ 2	17.5	1	13.5	1	