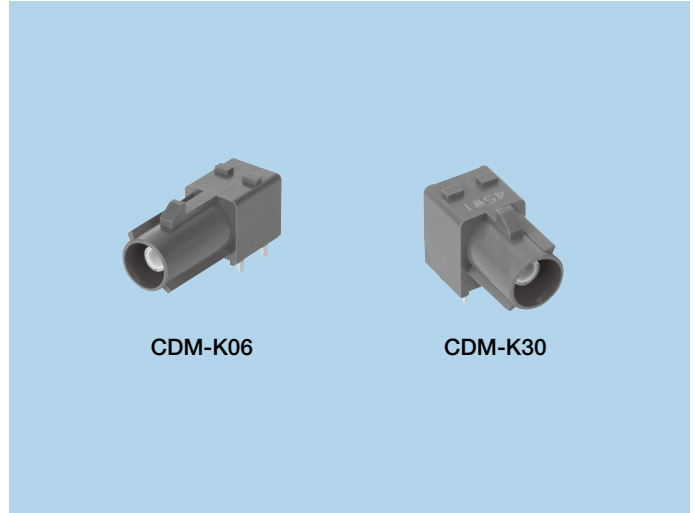


FAKRA Connector (Molded type) CDM-K06, CDM-K30

FEATURES

1. Applicable to automotive antennas for radio-frequency signal transmission.
2. Weight saving model with a metal stamping shell.
3. Each coding (mating key) is available.
4. Compliant with RoHS Directive.



CDM-K06

CDM-K30

HOW TO ORDER

1. CDM-K06

K06 - 001 - 230 - ANBAA - $\frac{\square}{2}$
1

- 1 Series No. (K06)
- 2 Coding (A~Z)

2. CDM-K30

K30 - 001 - 230 - ANAAA - $\frac{\square}{2}$
1

- 1 Series No. (K30)
- 2 Coding (A~Z)

SPECIFICATIONS

ELECTRICAL CHARACTERISTICS

Rated Voltage	60V DC max.
Rated Current	1A DC max.
Characteristic Impedance	50Ω
Insertion Loss	0.15dB max. (0 to 1GHz) 0.25dB max. (1 to 2.5GHz) 0.35dB max. (2.5 to 4GHz)
Return Loss	15.6dB min. (0 to 2GHz) 14.0dB min. (2 to 4GHz)

MECHANICAL CHARACTERISTICS

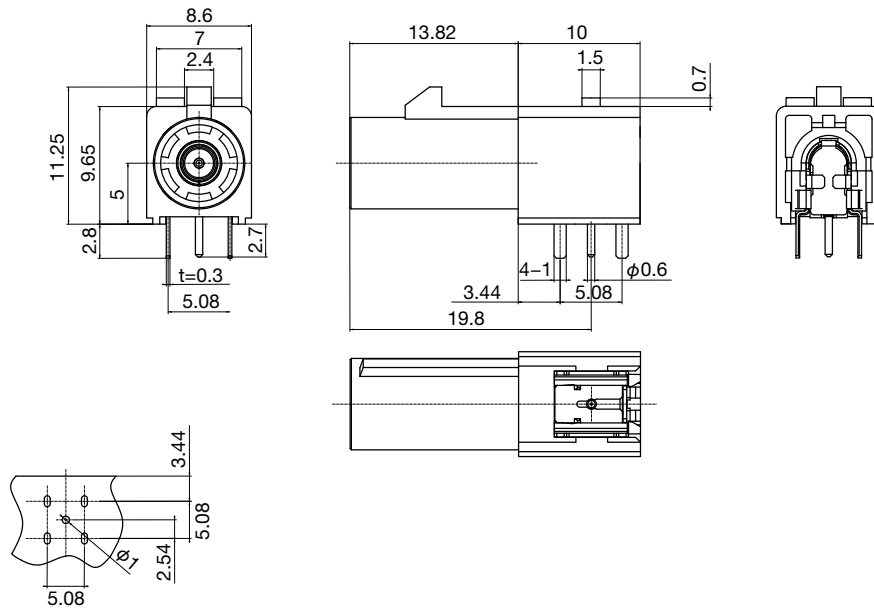
Life (Mating Cycle)	25 times
Total Insertion Force	≤25N
Total Withdrawal Force	≤25N

MATERIAL & FINISH

Component Parts		Material	Finish
CDM-K06 Mold type Long	Contact Pin	Copper alloy	Gold plating
	Housing	LCP resin	Natural
	Shell	Copper alloy	Ni plating
	Plate	Copper alloy	Su plating
	Cover	PA9T resin	Corresponds to each coding
CDM-K30 Mold type Short	Contact Pin	Copper alloy	Gold plating
	Housing	LCP resin	Natural
	Shell	Copper alloy	Ni plating
	Cover	PA9T resin	Corresponds to each coding

DIMENSIONS

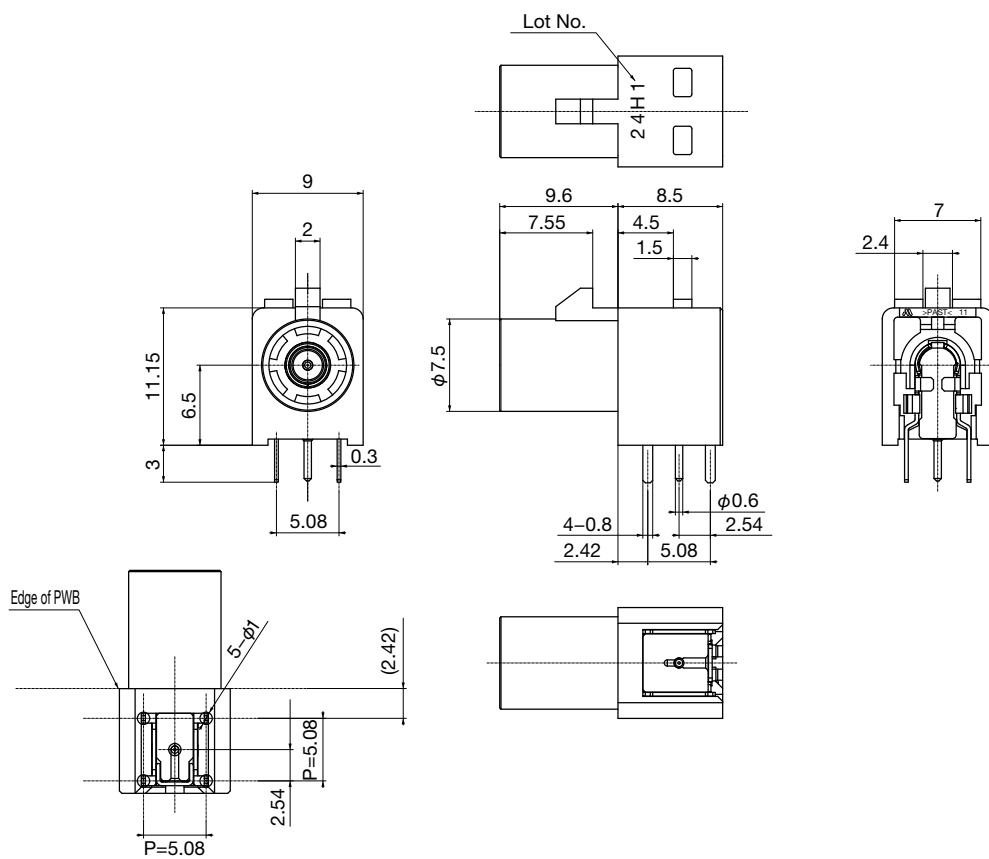
CDM-K06



The reference PWB size. (TOLERANCE:±0.05)

Unit : mm

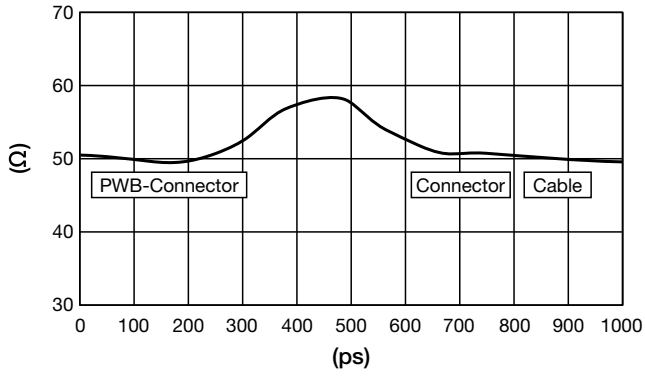
CDM-K30



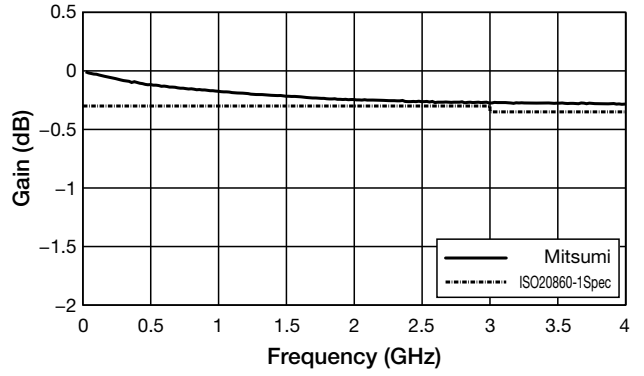
The reference PWB size. (TOLERANCE:±0.05)

Unit : mm

Characteristic Impedance



Insertion loss



Return loss

