

04015SS

General purpose

2023/12/27

General Specifications



Motor Protection: Auto Restart / Polarity Protection

Insulation Resistance: 10M ohm or over with a DC500V Megger

Dielectric Withstand Voltage: AC700V 1s

Allowable Ambient Temperature Range : 12L, 12M, 12N, 24L, 24M

Class: -10deg.C - +70deg.C (Operating)

24N Class:

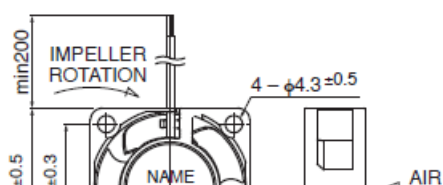
-10deg.C - +60deg.C (Operating)

-40deg.C - +70deg.C (Storage) non-condensing environment

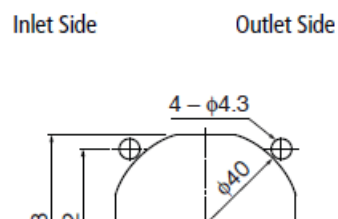
Expected Life

40deg.C 40,000 Hours *Failure Rate 10% (L10 Life)

Outline



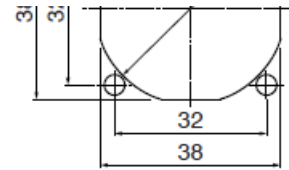
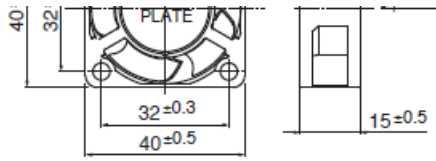
Panel Out-cuts



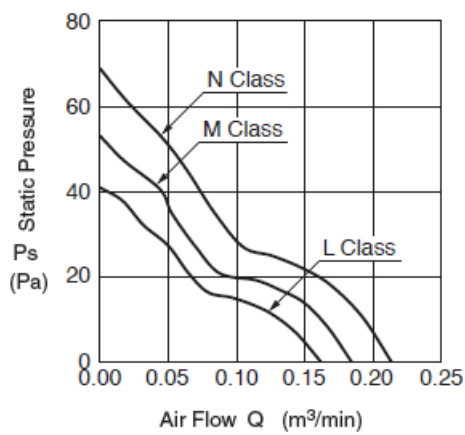
04015SS

General purpose

2023/12/27



Characteristic Curves



Material

Casing: Plastic (Black) UL94V-0

Impeller: Plastic (Black) UL94V-0

Bearing: Sleeve

Bearing Lead Wire: UL1061 AWG26 +: Red, -: Black

Specifications

Model	Product No	Nominal Voltage [V]	Operating Voltage lower limit [V]	Operating Voltage upper limit [V]	Current [A]	Input Power [W]
n4015SS-12I-AA-						

04015SS

General purpose

2023/12/27

04015SS-12L-AA-00	00	12	6.0	13.8	0.04	0.48
04015SS-12M-AA-00	00	12	6.0	13.8	0.05	0.60
04015SS-12N-AA-00	00	12	6.0	13.8	0.06	0.72
04015SS-24L-AA-00	00	24	10.0	27.6	0.03	0.60
04015SS-24M-AA-00	00	24	10.0	25.2	0.04	0.96
04015SS-24N-AA-00	00	24	10.0	25.2	0.05	1.20

Model	Speed [min-1]	Max. Air Flow [m3/min]	Max. Air Flow [CFM]	Max. Static Pressure [Pa]	Max. Static Pressure [In H2O]	Noise [dB]	Mass [g]
04015SS-12L-AA-00	6300	0.16	5.70	40.0	0.16	26.0	23.0
04015SS-12M-AA-00	7300	0.18	6.40	52.0	0.21	29.0	23.0
04015SS-12N-AA-00	8300	0.21	7.40	68.0	0.27	32.0	23.0
04015SS-24L-AA-00	6300	0.16	5.70	40.0	0.16	26.0	23.0
04015SS-24M-AA-00	7300	0.18	6.40	52.0	0.21	29.0	23.0
04015SS-24N-AA-00	8300	0.21	7.40	68.0	0.27	32.0	23.0

Rotation: Clockwise as seen from the label side

Airflow Outlet: Label side

*1: Average Values in Free Air