

09232JE for Evaporator

Refrigerator

2023/12/27

General Specifications



Motor Protection: Auto Restart

Insulation Resistance: 10M ohm or over with a DC500V Megger

Dielectric Withstand Voltage: AC700V 1s

Allowable Ambient Temperature Range : -40deg.C - +40deg.C (Operating)

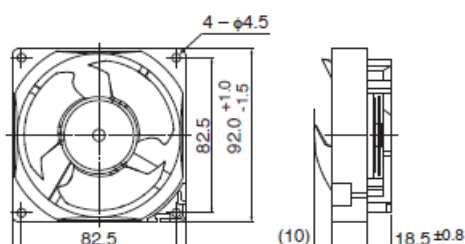
-40deg.C - +70deg.C (Storage)

non-condensing environment

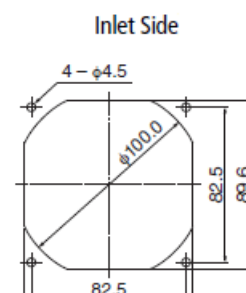
Expected Life

-20deg.C 70,000 Hours *Failure Rate 10% (L10 Life)

Outline



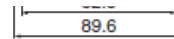
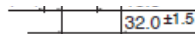
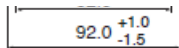
Panel Out-cuts



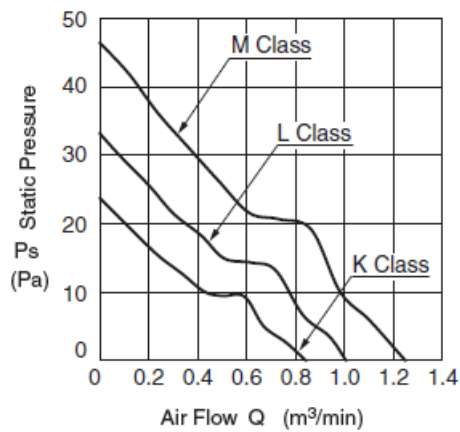
09232JE for Evaporator

Refrigerator

2023/12/27



Characteristic Curves



Material

Casing: Plastic (Black) UL94V-0

Impeller: Plastic (Black) UL94V-0

Bearing: Ball

BearingLead Wire: UL1007 AWG26 +: Red, -: Black

Specifications

Model	Product No	Nominal Voltage [V]	Operating Voltage lower limit [V]	Operating Voltage upper limit [V]	Current [A]	Input Power [W]
09232JE-12K-BA-F0	F0	12	7.0	13.2	0.06	0.72
09232JE-12L-BA-						

09232JE for Evaporator

Refrigerator

2023/12/27

F0	F0	12	7.0	13.2	0.08	0.96
09232JE-12M-BA-F0	F0	12	7.0	13.2	0.13	1.56

Model	Speed [min-1]	Max. Air Flow [m3/min]	Max. Air Flow [CFM]	Max. Static Pressure [Pa]	Max. Static Pressure [In H2O]	Noise [dB]	Mass [g]
09232JE-12K-BA-F0	2400	0.84	29.70	23.6	0.09	25.5	130.0
09232JE-12L-BA-F0	2800	1.00	35.30	33.0	0.13	29.5	130.0
09232JE-12M-BA-F0	3350	1.24	43.80	46.3	0.19	34.5	130.0

Rotation: Clockwise as seen from the label side

Airflow Outlet: Label side

*1: Average Values in Free Air