

# 2810KL

General purpose

2023/12/27

## General Specifications



Motor Protection: Auto Restart / Polarity Protection

Insulation Resistance: 10M ohm or over with a DC500V Megger

Dielectric Withstand Voltage: AC700V 1s

Allowable Ambient Temperature Range : -10deg.C - +70deg.C (Operating)

-40deg.C - +70deg.C (Storage)

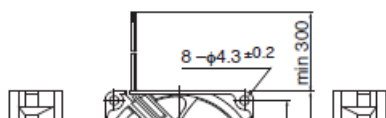
non-condensing environment

## Expected Life

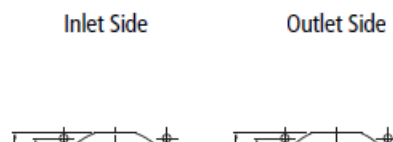
25deg.C 100,000 Hours (B30 - B50 Class) \*Failure Rate 10% (L10 Life)

25deg.C 90,000 Hours (B70 Class) \*Failure Rate 10% (L10 Life)

## Outline



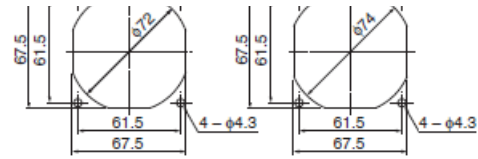
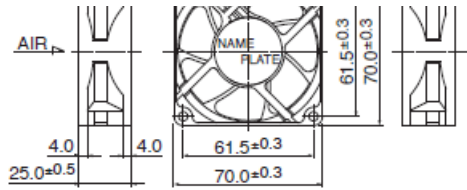
## Panel Out-cuts



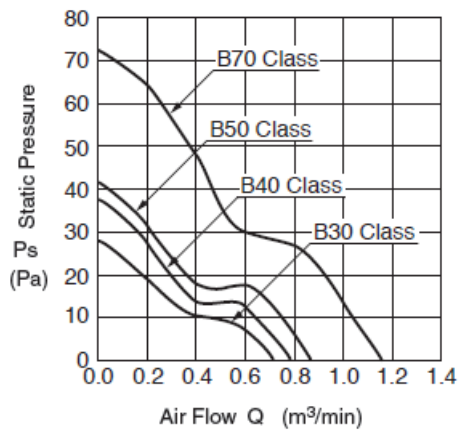
# 2810KL

General purpose

2023/12/27



## Characteristic Curves



## Material

Casing: Plastic (Black) UL94V-0

Impeller: Plastic (Black) UL94V-0

Bearing: Ball

Bearing Lead Wire: UL1007 AWG24 +: Red, -: Black

## Specifications

Model	Product No	Nominal Voltage [V]	Operating Voltage lower limit [V]	Operating Voltage upper limit [V]	Current [A]	Input Power [W]

**2810KL**

General purpose

2023/12/27

2810KL-04W-B30-E00	E00	12	6.0	13.8	0.15	1.80
2810KL-04W-B40-E00	E00	12	6.0	13.8	0.15	1.80
2810KL-04W-B50-E00	E00	12	6.0	13.8	0.18	2.16
2810KL-04W-B70-E00	E00	12	6.0	13.0	0.35	4.20

Model	Speed [min-1]	Max. Air Flow [m <sup>3</sup> /min]	Max. Air Flow [CFM]	Max. Static Pressure [Pa]	Max. Static Pressure [In H <sub>2</sub> O]	Noise [dB]	Mass [g]
2810KL-04W-B30-E00	3150	0.71	25.10	28.4	0.11	28.0	72.0
2810KL-04W-B40-E00	3450	0.78	27.50	36.5	0.15	31.5	72.0
2810KL-04W-B50-E00	3800	0.88	31.10	41.1	0.16	33.5	72.0
2810KL-04W-B70-E00	4800	1.15	40.60	71.7	0.29	43.0	72.0

Rotation: Clockwise as seen from the label side

Airflow Outlet: Label side

\*1: Average Values in Free Air