

SPECIFICATIONS

P.C. Board Type Digital Indicator

1. General

This instrument is the built-in P.C. Board type digital indicator with RS-232C interface, and it is suitable for the application inside of control panel, such as batcher scale, platform scale, and so on.

2. Specifications

2-1. Specifications for analog

- Bridge power supply DC10 V \pm 0.5 V within 120 mA (DC2.5 V is changeable) with remote sensing applied.
- Applicable transducer Up to 4 pieces of strain gage applied transducers(350 Ω) can be connectable.
- Input range F.S. setting can be made with the input range from 0.2 mV/V to 3.1 mV/V (Bridge power supply is at DC10 V)
- Zero adjustment range -0.1 mV/V to 2.4 mV/V
- Non-linearity 0.01 %F.S.
(F.S. setting with the input range from 3 mV/V to 3.1 mV/V)
- Temperature coefficient
Zero point $\pm 0.4 \mu\text{V}/^\circ\text{C}$
(Input conversion, at F.S. setting with the input range from 0.3 mV/V to 3.1 mV/V)
- Sensitivity $\pm 0.003 \text{ %F.S.}/^\circ\text{C}$
(At F.S. setting with the input range from 0.3 mV/V to 3.1 mV/V)
- Input noise $\pm 0.3 \mu\text{Vp-p}$ or less.
(at the default setting for digital filter and stabilized filter)
- A/D sampling 100 times/s
- CHECK Approx.0.3 mV/V
(Setting can be provided at the intervals of 0.1 mV/V with the range from 0.1 mV/V to .5 mV/V)

2-2. Specifications for digital

- Load display Load display or setting display
Display range $-1\ 000$ to $11\ 000$ ($\times 2$, $\times 5$ and $\times 10$ can be available.)
Display Red 7 segment LED, character's height 8 mm, 5 digits
Over display “-OL” display when minus over and “OL” display when plus over.
- Status display RUN, A/Z, LOCK, HOLD, CHECK
- Display rate 4 times/s (20 times/s or 50 times/s changeable)
- Decimal point display No display, 10^1 , 10^2 , 10^3 or 10^4 changeable

2-3. Key switch function

- A/Z /◀ Tare weight cancellation / Setting value carry
- A/Z OFF /▲ Tare weight cancellation clear / Setting value increment
- ZERO Zero set
- FUNC Changeover of Function mode
- CHECK ON/OFF of check value
- ENTER Enter key

SPECIFICATIONS

CSD-581-74

Spec. No. EN382581-74-F

2/4

2-4. External control function

- ZERO Same as ZERO key
- A/Z Same as A/Z key
- A/Z OFF Same as A/Z OFF key
 - ※ Above are pulse inputs, and they are effective once when the pulse width is 100 ms or more.
- HOLD Display, or hold of RS-232C interface
- LOCK Prohibiting key operation
 - ※ Above are level inputs, and they are effective when input is applied with the short for 100 ms or more.

2-5. Open collector output signal

- RUN ON during the measurement mode in the instrument
- ERROR ON during the various kinds of errors occurred
 $V_{CE} = DC30\text{ V}$, $I_C = DC30\text{ mA MAX}$

2-6. RS-232C interface

- Specifications
 - Baud rate · Selection from 600,1 200,2 400,4 800,9 600,19 200 and 38 400 bps
 - Data bit length · Selection from 7 bit and 8 bit
 - Parity bit · Selection from None, Even and Odd
 - Stop bit · Selection from 1 bit and 2 bit
 - Terminator · CR+LF
 - Communication method
 - Half duplex
 - Synchronous method · Start-stop synchronous method
 - Communication data · ASCII code
 - Input/output monitor with LED
- ※ Other than the Measurement mode, communication will be down.

• Layout of RS-232C connector pin Suitable plug : DE-9S-NR by JAE or equivalent.

Pin No.	Signal Name
1	CD
2	TXD
3	RXD
4	N.C.
5	S.G.
6	N.C.
7	RTS
8	CTS
9	N.C.

- ※ Connector plug is not attached.
- ※ The screw for fixing to the connector is inch type screw.
- ※ Don't connect with the N.C. pin

- Function
 - ① Read out the load data (Gross weight, Net weight, Tare weight)
 - ② Read out the status (on/off the A/Z, ERROR)
 - ③ Change of status (on/off the A/Z, ZERO)
 - ④ Communication error code (Error code related to Communication)
 - ⑤ Calibration

SPECIFICATIONS

2-7. Various kinds of function

- Zero tracking Stabilizes the variation of zero within the constant condition.
- Digital filter Stabilizes the data through the processor inside of CPU.
- Stabilized filter Makes the digital filter strengthened/stabilized only when variable width of load is within the constant value.
- Change target of load display Selects the target of display from Gross weight and Net weight.
- Change target of HOLD By the combination with “Display” and “RS-232C interface”, target for HOLD can be made.
- Key lock Prohibiting key operation
※Different operation from the LOCK function.

3. General specification

- Operating temperature/humidity range
 - Temperature -10 °C to 50 °C
 - Humidity Less than 85 %RH (Non condensing.)
- Power supply
 - Power supply voltage DC24 V (DC18 V to 36 V)
 - Power consumption Approx. 9 W at maximum (At DC24 V)
- Insulation resistance 100 MΩ or more, at DC500 V (DC power supply ↔ GND)
- Withstand voltage AC500 V for 1 min. (DC power supply ↔ GND)
- Outline dimensions(W × H × D)
 - : 220 mm × 130 mm × 25 mm
 - (Excludes protruding parts except on the surface.)
- Weight Approx. 250 g

4. Standard specifications at the shipment

- Bridge power supply DC10 V
- Span adjustment 2 000 display at the input of 0.3 mV/V
- Tare weight 0 mV/V
- The minimum scale 1
- Decimal point Non

5. Accessories

- Instruction manual 1 piece
- Midget fuse (5 A) 1 piece
- Short bars for A-F, C-G 2 pieces
- Seal for unit 1 piece

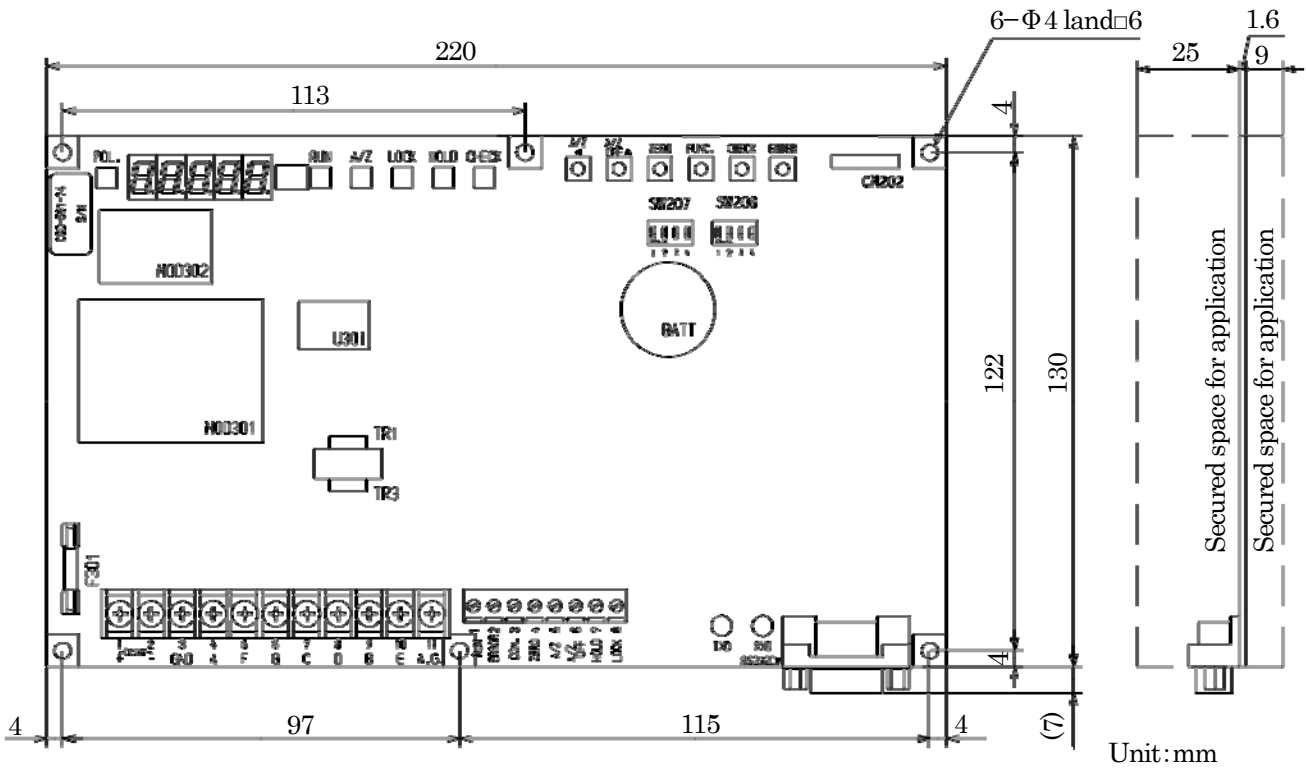
6. Options

6-1. Metal cover

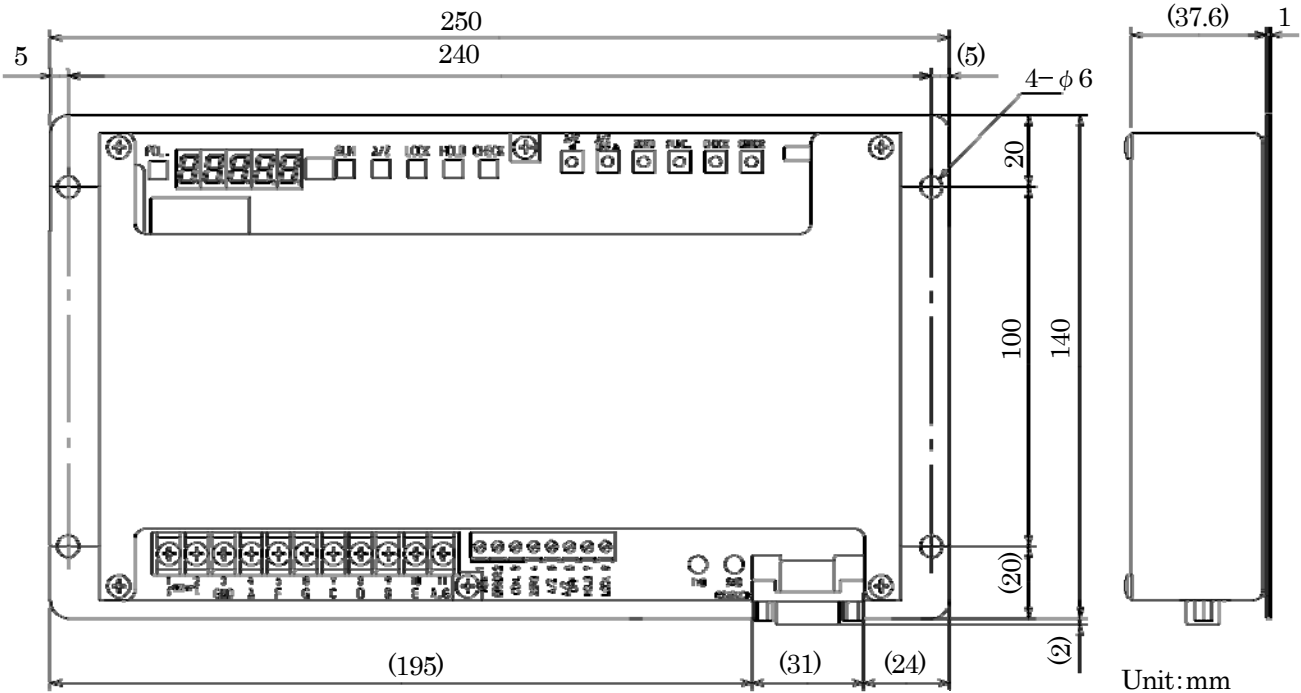
- P/N CSD581-P80
- Specifications
 - Outline dimensions(W × H × D)
 - : 250 mm × 140 mm × 38.6 mm (Excludes protrusion.)
 - Weight Approx. 550 g

SPECIFICATIONS

7. Outline dimensions



Dimensions when the optional metal cover(CSD581-P80) is installed.



※ Specifications and outline dimensions and so on which have printed may subject to change for the purpose of improvement without notice.