

SPECIFICATIONS

TRANSMITTER

1. General

The instrument is a transmitter for the application with strain gage applied transducers.

2. Specifications

- Bridge power supply DC10 V±0.3 V within 120 mA (Changeable to DC2.5 V or DC5 V) with remote sensing applied.
- Applicable transducers Up to 4 pieces of strain gage applied transducers(350 Ω) can be connectable.
- Input range 0.3 mV/V to 3 mV/V
- Output ±10 V output
(At the input of ±0.3 mV/V when bridge power supply is DC10 V.)
- Output load resistance 2 kΩ or more
- Zero adjustment range ±2.4 mV/V
Coarse adjustment Rotary switch
Fine adjustment Zero adjustment trimmer
- Non-linearity 0.01 %F.S.
- Temperature coefficient
Zero point Within ±0.45 μV/°C (Input conversion)
Sensitivity Within ±0.005 %F.S./°C
- CALIBRATION 0.3 mV/V±0.0003 mV/V, 1 point
Applicable Extension cable is Minebea's standard CAB-501 (6 cores) within 100 m.
Except when zener barrier is in use.
- CHECK 1 point
- Frequency response range 10 Hz (1 Hz or 100 Hz can be changeable.)

3. General specifications

- Operating temperature/humidity range
Temperature -10 °C to 50 °C
Humidity Less than 80 %RH (Non condensing.)
- Power supply
Power supply voltage AC100 V±10 V
Power supply frequency 50/60 Hz
Power consumption Approx. 10 VA (At AC100 V)
- Insulation resistance DC500 V, 100 MΩ or more
between power supply line and case.
- Withstand voltage AC1 500 V for 1 min. between power supply line and the case.
- Outline dimensions(W×H×D) 42 mm×176 mm×164.4 mm (Excludes protruding parts.)
- Weight Approx. 1.5 kg

SPECIFICATIONS

4. Standard specifications at the time of shipment

- Bridge power supply DC10 V
- Sensitivity 10 V output at the input of 0.3 mV/V
(4 mA to 20 mA when optional P07 is applied.)
- Frequency response range 10 Hz
- Power supply
 - Power supply voltage AC100 V \pm 10 V
 - Power supply frequency 50/60 Hz

5. Accessories

- Instruction manual 1 piece
- Fuse 1 piece
- Minusdriver 1 piece
- Shortening bar between A-F and C-G
 2 pieces

6. Options

6-1. Specifications for current output

- P/No. CSA503C-P07
 - Output 4 mA to 20 mA (Isolation)
 - Load resistance 510 Ω or less
 - Non-Linearity 0.02 %F.S.
 - Temperature efficient
 - Zero point \pm 0.004 %F.S./ $^{\circ}$ C
 - Sensitivity \pm 0.005 %F.S./ $^{\circ}$ C

6-2. Automatic zero

- P/No. CSA-503C-P99
 - Operating voltage for automatic zero
 Within \pm 10 V
 - Required time for automatic zero
 Within approx. 1 s.
 - Accuracy on automatic zero
 Within \pm 5 mV
 - Non-Linearity 0.01 %F.S.
 - Temperature range
 - Zero point Within \pm 0.005 %F.S./ $^{\circ}$ C
 - Sensitivity Within \pm 0.005 %F.S.
 - Battery back-up time Approx. 5 years (Lithium battery is used.)

6-3. Power supply voltage

- P/No. CSA503C-P61 AC110 V \pm 11 V
- P/No. CSA503C-P63 AC200 V \pm 20 V
- P/No. CSA503C-P64 AC220 V \pm 22 V

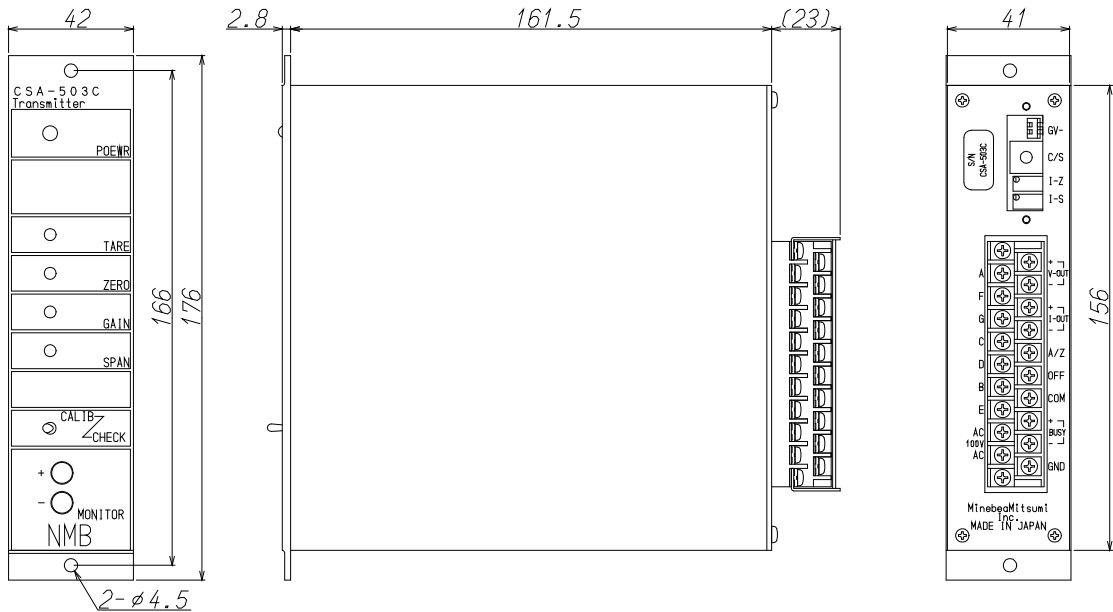
SPECIFICATIONS

CSA-503C

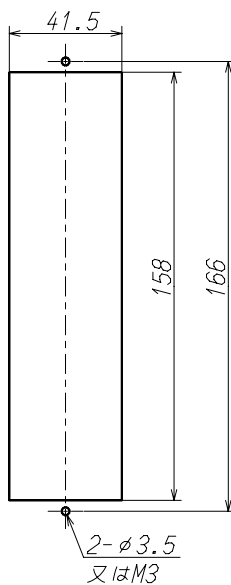
Spec. No. EN351503C-J

3/3

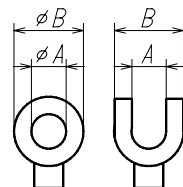
7. Outline dimensions



Panel cut size



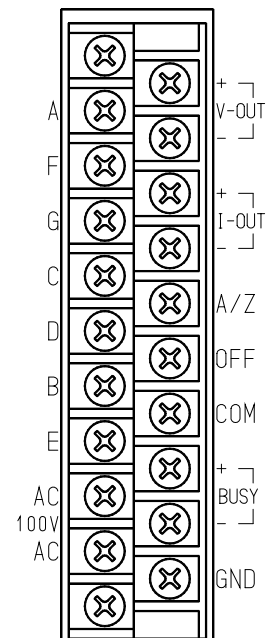
Suitable crimp-type terminal lugs



A: 3.2 mm or more

B: 6.3 mm or less

Rear terminal



Unit: mm

Specifications and outline dimensions and so on which have printed may subject to change for the purpose of improvement without notice.