

SPECIFICATIONS

Mounting attachment with slide stop mechanism FCA-CMM1/CMP1-※-S

Spec. No. EN216072-G

1/3

Flexible stop method
mounting attachment with slide stop mechanism
for CMM1-50K~2T/CMP1-250K~10T

- P/N : FCA-CMM1-50K/2T-S, FCA-CMP1-250K/2T-S
 - Applicable load cell : CMM1-50K~2T (FCA-CMM1-50K/2T-S)
CMP1-250K~2T (FCA-CMP1-250K/2T-S)
 - Allowable horizontal load : ± 11.77 kN { 1 200 kgf }
 - Allowable horizontal moving length : ± 10 mm
 - Material : Equivalent to SUS304 (Rod end is stainless painting.)
 - Weight : Approx. 8 kg
 - Accessories : Attachment 1 piece ※
Hexagon socket head cap screws (M5×L6) 4 pieces ※
Hexagon socket head cap screws (M6×L6) 3 pieces
Bearing plate 1 piece
Guide plate 2 pieces
Instruction manual 1 piece
(※: Attached only for FCA-CMM1-50K/2T-S)
 - Optional products : Dummy load cell
P/N: FCAD-CMM1-50K/2T, FCAD-CMP1-250K/2T
Welding plate
P/N: FCAW-CMM1-50K/2T (-S), FCAW-CMP1-250K/2T (-S)
Check rod to prevent the floating
P/N: FCAR-CMM1-50K/2T-S, FCAR-CMP1-250K/2T-S
- P/N : FCA-CMP1-5T-S
 - Applicable load cell : CMP1-5T
 - Allowable horizontal load : ± 29.42 kN { 3 tf }
 - Allowable horizontal moving length : ± 10 mm
 - Material : Equivalent to SUS304 (Rod end is stainless painting.)
 - Weight : Approx. 12 kg
 - Accessories : Bearing plate 1 piece
Guide plate 1 piece
Hexagon socket head cap screws (M6×L6) 3 pieces
Instruction manual 1 piece
 - Optional products : Dummy load cell P/N: FCAD-CMP1-5T
Welding plate P/N: FCAW-CMP1-5T (-S)
Check rod to prevent the floating P/N: FCAR-CMP1-5T-S
- P/N : FCA-CMP1-10T-S
 - Applicable load cell : CMP1-10T
 - Allowable horizontal load : ± 58.84 kN { 6 tf }
 - Allowable horizontal moving length : ± 10 mm
 - Material : Equivalent to SUS304 (Rod end is stainless painting.)
 - Weight : Approx. 18 kg
 - Accessories : Bearing plate 1 piece
Guide plate 1 piece
Hexagon socket head cap screws (M6×L6) 3 pieces
Instruction manual 1 piece
 - Optional products : Dummy load cell P/N: FCAD-CMP1-10T
Welding plate P/N: FCAW-CMP1-10T (-S)
Check rod to prevent the floating P/N: FCAR-CMP1-10T-S

SPECIFICATIONS

Mounting attachment with slide stop mechanism FCA-CMM1/CMP1-※-S

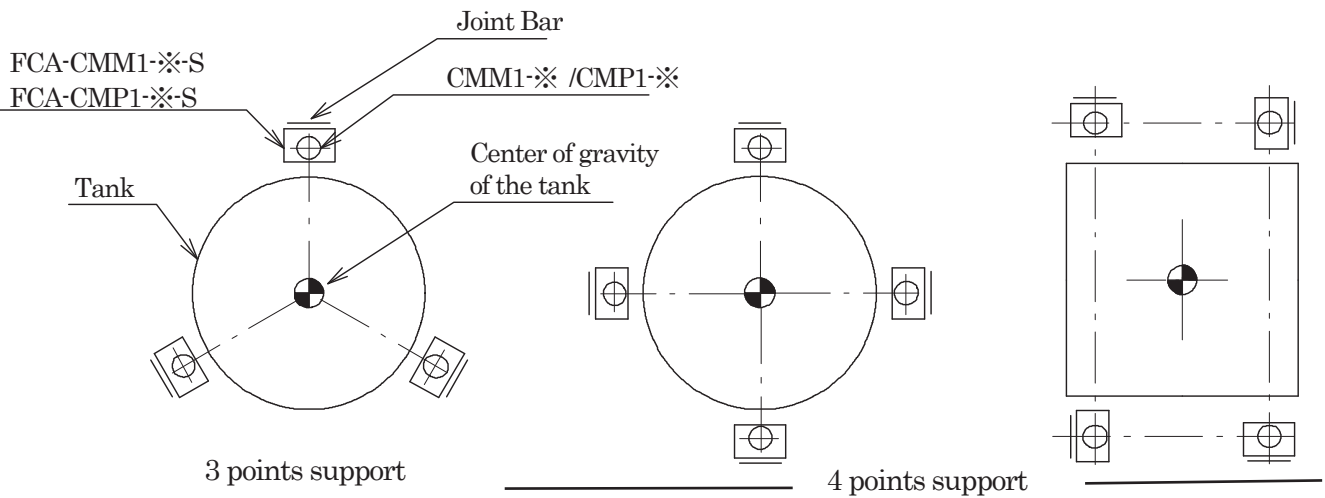
Spec. No. EN216072-G

2/3

• P/N	: FCA-CMP1-20T-S	
Applicable load cell	: CMP1-20T	
Allowable horizontal load	: $\pm 117.7 \text{ kN} \{ 12 \text{ tf} \}$	
Allowable horizontal moving length	: $\pm 10 \text{ mm}$	
Material	: Equivalent to SUS304 (Rod end is stainless painting.)	
Weight	: Approx. 37 kg	
Accessories	: Bearing plate	1 piece
	Guide plate	1 piece
	Hexagon socket head cap screws (M8×L8)	3 pieces
	Instruction manual	1 piece
	Optional products	: Dummy load cell
	: Welding plate	P/N: FCAW-CMP1-20T (-S)
	: Check rod to prevent the floating	P/N: FCAR-CMP1-20T-S

Remarks

- 1) Secure the space around bracket part of the tank for using the jack.
- 2) Please prepare the fall prevention mechanism separately.
- 3) Installed height recommends the vicinity of the tank center of gravity position.
- 4) Install the joint bar facing to outside. (Refer to the below drawing.)



SPECIFICATIONS

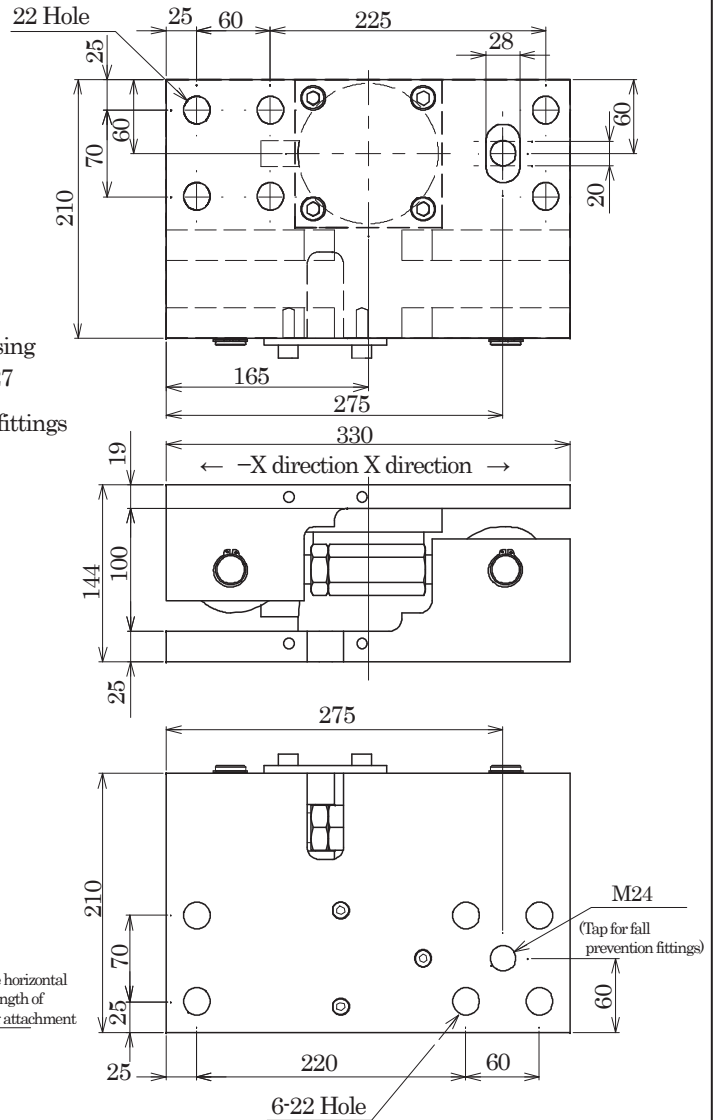
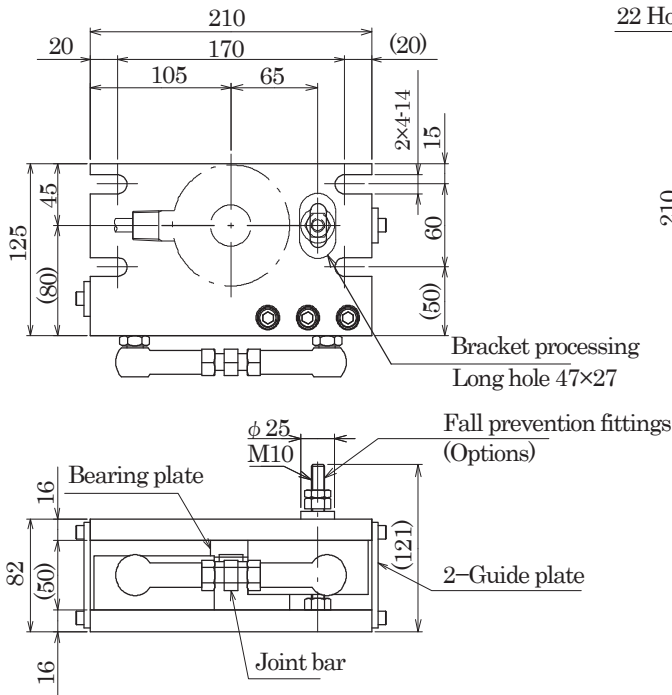
Mounting attachment with slide stop mechanism FCA-CMM1/CMP1-※-S

Spec. No. EN216072-G

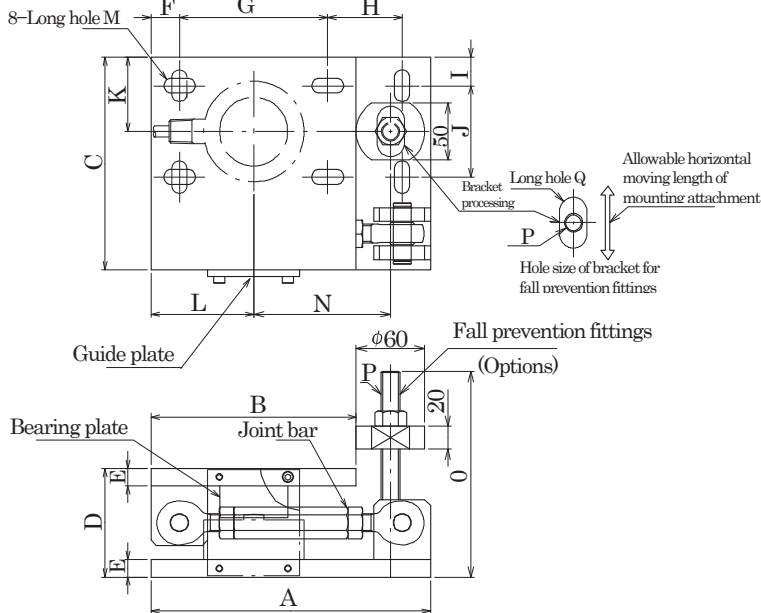
3/3

- FCA-CMM1-50K/2T-S
- FCA-CMP1-250K/2T-S

•FCA-CMP1-20T-S



- FCA-CMP1-5T-S
- FCA-CMP1-10T-S



Unit : mm

Outline dimensions

(Unit : mm)

P/N	A	B	C	D	E	F	G	H	I	J	K	L	M	N	O	P	Q	Weight (kg)
FCA-CMP1-5T-S	245	180	186	95	15	25	130	65	25	80	65	90	28×13	120	180	M16	44×24	12
FCA-CMP1-10T-S	270	200	200	115	20	30	140	70	25	80	65	100	32×22	120	200	M20	44×28	18

※Specifications and outline dimensions and so on which have printed may subject to change for the purpose of improvement without notice.