

## NOTICE DURING INSTALLATION



Warning

Warning that causes injury or accident and develops into harm to the operator.  
Do not do these things described here.

In the case of carriage

- When you carry the instrument, check that there is no looseness at the fixed bolt on the guide plate. There may be fears of disassembly of the instrument or falling down of the parts.
- It is strictly prohibited from lifting up the load cell cable, when you carry the instrument. There may be fears of cutting off the cable or falling down of the instrument.

Location to install

- When you install the instrument, be sure to work with full considerations on safety.
- Use the instrument where the temperature/humidity specifies within the range as follows:

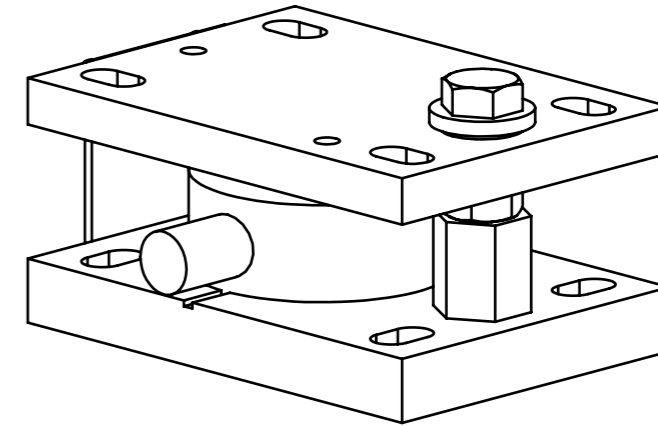
Environmental temperature : - 10°C to 70°C

Environmental humidity : Less than 85 %RH

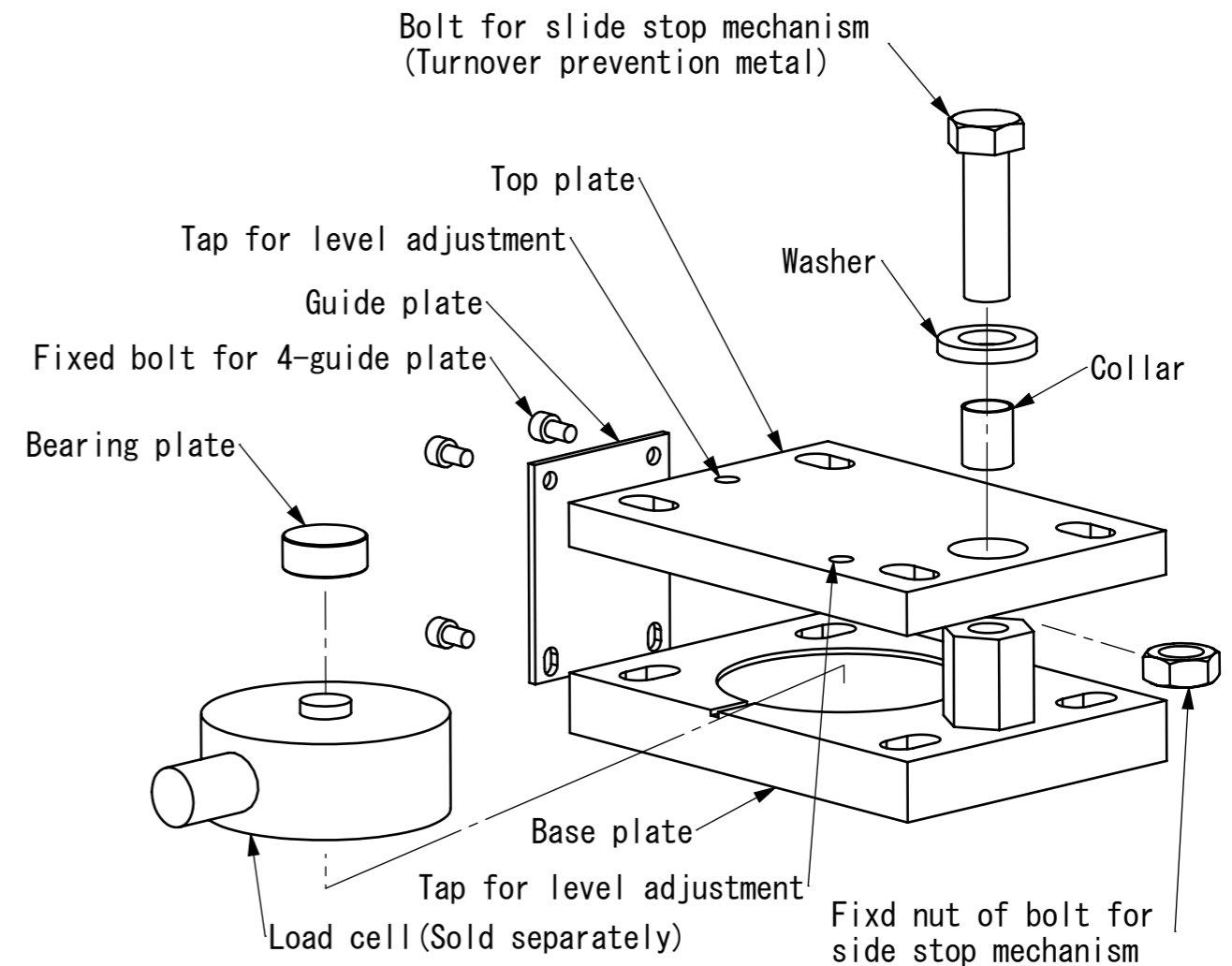
- When you install, tighten it securely with the bolts.  
If you neglect, there may be fears of deterioration in the specifications for the instrument.
- Protect the load cell cable with the piping materials.  
Due to the external injury, chemicals and washing, there may cause deterioration in insulation or cutting off the cable by the deterioration of cover.
- The clearance hole should be prepared for the bracket at the turnover preventing device of the instrument.
- Be sure to keep the instruction manual for the instrument, and also all of the removed parts at hand.  
They will become necessary when maintenance is required.

### Record of revision

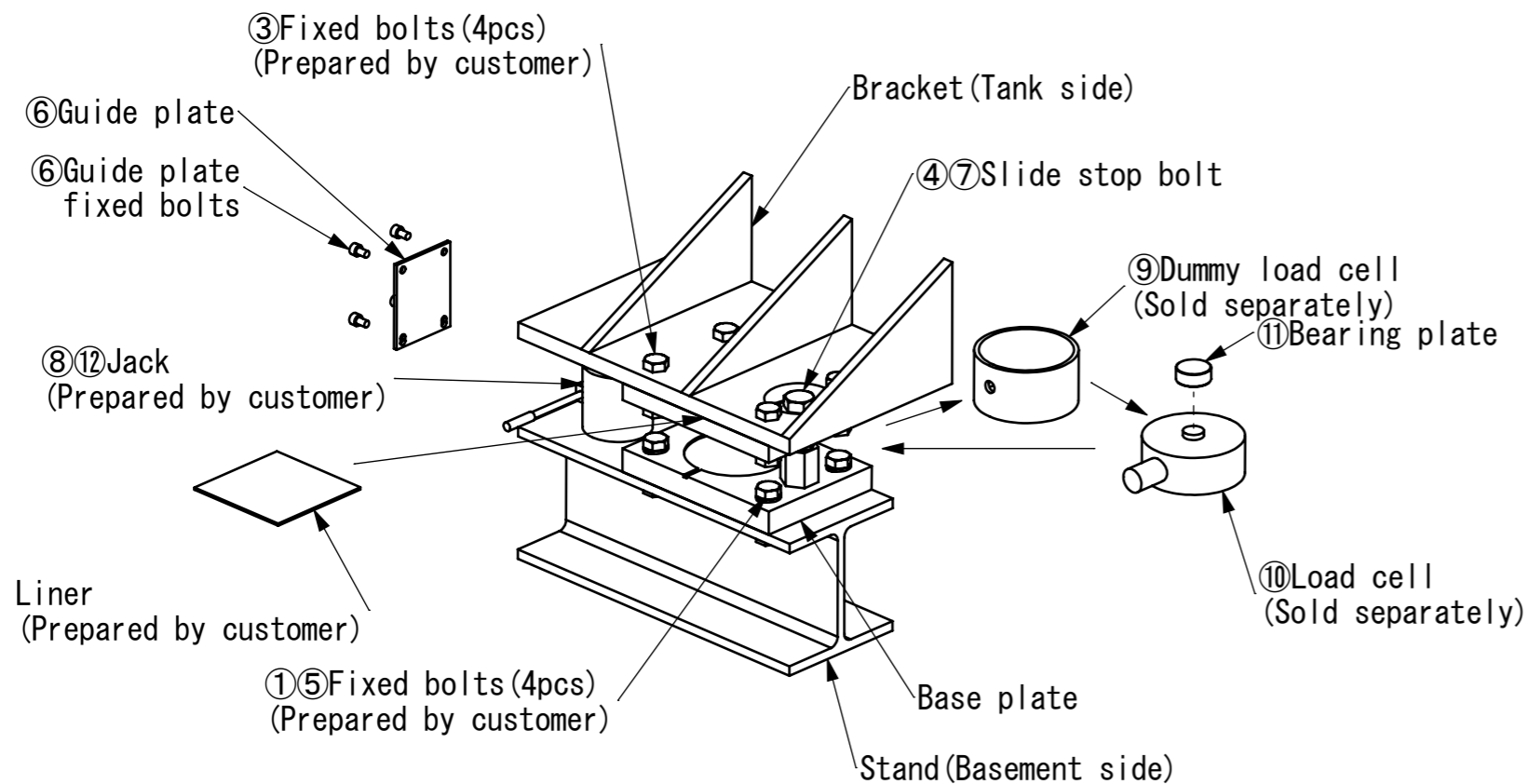
Date	Instruction No.	Contents
Jan-20	DRW.EN293-1018	First version



Combined condition with load cell at the time of shipment



Constructions of parts for CCA-CMP1-\*S



## ■ Example of installation procedures

- ① Fix the base plate on the stand preliminarily.  
\* The level on the upper surface of the stand should be within  $\pm 0.3$  deg.
- ② Lower the tank.
- ③ Fix the top plate on the bracket.
- ④ Check that the slide stop bolt adjusts to the center of side stop hole on the top plate.
- ⑤ Fix the base plate to the stand.
- ⑥ Remove the guide plate.  
(When you have purchased Dummy load cell, continue the procedures as below.)
- ⑦ Loosen the bolts for slide stop, then make it up approx. 4 mm.
- ⑧ Lift up the tank approx. 4 mm by using a jack.
- ⑨ Remove the dummy plate.
- ⑩ Place the load cell on the section of spot facing on base plate.
- ⑪ Put the bearing plate on the load cell.
- ⑫ Lower the tank slowly.

## ■ Example of adjustment procedures

After installing the instrument, make adjustment on the installation as follows: Ideal Condition

- At the time of tare weight application, controls the output of each load cell less than 30 % (standard) of deviation against the equal division.

### ● Level adjustment procedures

- What is "Level adjustment" ?

To adjust the tare weight (Weight of tank) so that the each load cell shall weight equally.

Prepare some liners for each (0.1, 0.2, 0.5 and 1 mm).

- Adjustment procedures

Check on the tare division.

Insert the liners to the load cell section whose division of tare weight is light.

Loosen the fixed bolts located at the bracket side.

Lift the tank up by using the tap for level adjustment located on the top plate.

(You can also lift the tank up by using jacks.)

Insert the liners between the bracket and top plate.

Then lower the tank.