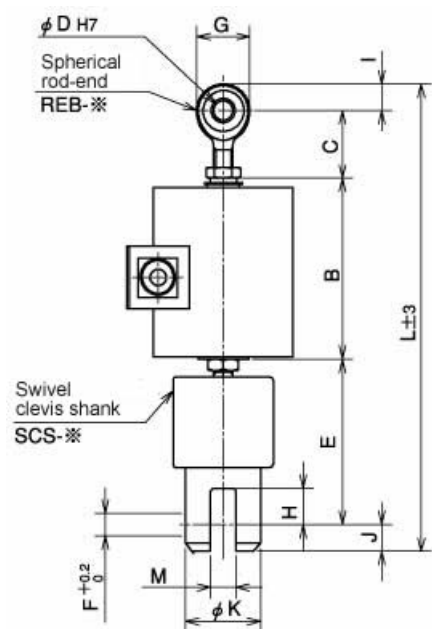


SCS series SCS1

2023/03/22

TCP1(A) series swivel clevis shank + spherical rod end



Item	Accessory part No.	B [mm]	C [mm]	φD [mm]	E [mm]	φF [mm]
TCP1-50K~TCP1-100K use	REB-2, SCS-2	115	36	10	90	10
TCP1A-200K~TCP1-1T use	REB-3, SCS-3	115	43	12	105	14
TCP1-2T~TCP1-5T use	REB-4A, SCS-4	150	60	22	179	25
TCP1-10T use	REB-5, SCS-5	215	127	40	229	40
TCP1-20T use	REB-6, SCS-6	290	170	50	328	60

Item	G [mm]	H [mm]	I [mm]	J [mm]	φK [mm]	L [mm]	M [mm]
TCP1-50K~TCP1-100K use	26	18	13	15	30	269	12
TCP1A-200K~TCP1-1T use	34	23	17	17	48	297	16
TCP1-2T~TCP1-5T use	62	55	31	35	88	455	30
TCP1-10T use	100	60	50	50	130	671	42
TCP1-20T use	120	90	60	74	165	922	50

Item	Weight [kg]
TCP1-50K~TCP1-100K use	0.05
TCP1A-200K~TCP1-1T use	0.06
TCP1-2T~TCP1-5T use	0.12
TCP1-10T use	0.25
TCP1-20T use	0.45

SCS series SCS1

2023/03/22

TCP1-50K~TCP1-100K use	0.85
TCP1A-200K~TCP1-1T use	1.92
TCP1-2T~TCP1-5T use	7.5
TCP1-10T use	25.2
TCP1-20T use	56.5