

SPECIFICATIONS

Explosion-proof Summing Type
Junction Box

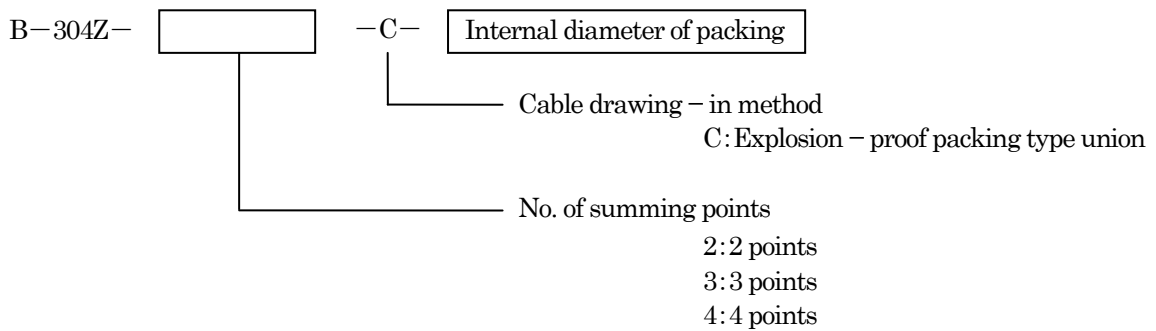
1. General

This instrument is applied when the summing of the signals from the explosion-proof type strain gage applied transducers is used in the dangerous area where the explosion-proof structure is required.

2. Specifications

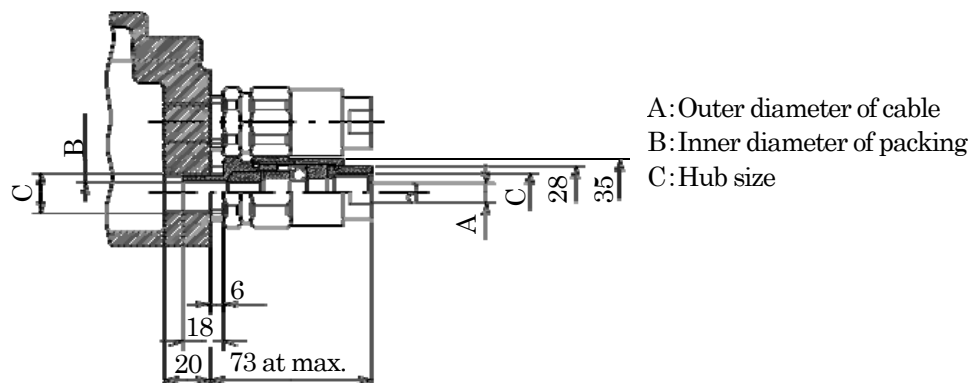
- P/No. B-304Z-* -C
- Explosion-proof performance d2G4
- Passing No. of model authorization No.T39811
- Protection structure IP52
- Paint color Black (Epotect Tar Free Black Base by Kansai Paint Co., Ltd.)
- Applicable diameter of cable ϕ 7 mm to ϕ 20 mm
- Cable drawing-in method Explosion-proof packing type union
- Weight Approx.18.5 kg

3. Parts No. configuration



4. Dimension of explosion-proof packing type union

| Parts No. of union | Outer diameter of cable | Inner diameter of packing | Hub size |
|--------------------|--------------------------|---------------------------|------------------|
| TUM16P | ϕ 7 to ϕ 9 | ϕ 9 | G 1/2 { PF 1/2 } |
| | ϕ 9.1 to ϕ 11 | ϕ 11 | |
| TUM22P | ϕ 11.1 to ϕ 13 | ϕ 13 | G 3/4 { PF 3/4 } |
| | ϕ 13.1 to ϕ 15 | ϕ 15 | |
| TUM28P | ϕ 15.1 to ϕ 18 | ϕ 18 | G 1 { PF 1 } |
| | ϕ 18.1 to ϕ 20 | ϕ 20 | |



SPECIFICATIONS

B-304Z-* -C

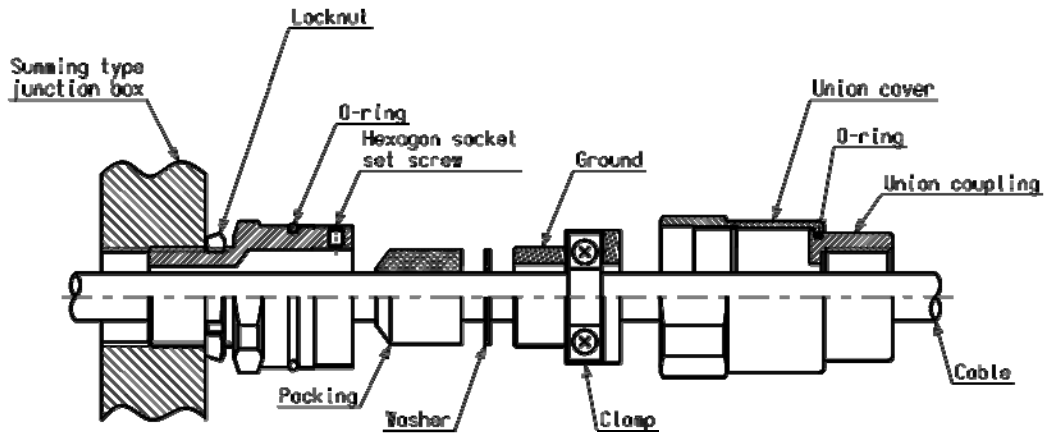
Spec. No. EN353304Z-C-G

2/3

5. Cable fixing

After wiring, tighten the cable ground or piping ground nut to secure the cable.

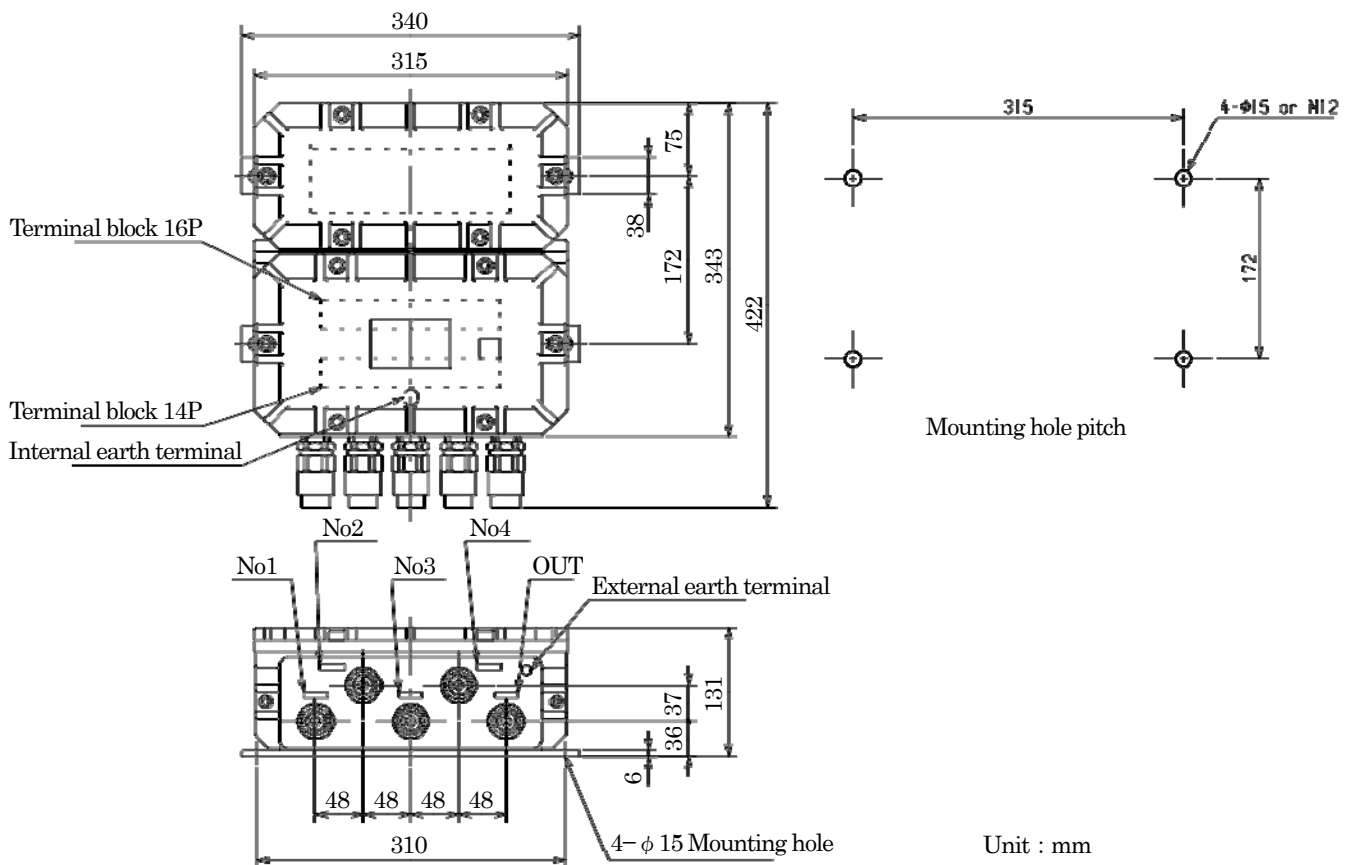
Tighten until the tightening nut does not turn, or tighten with a torque of 14.71 to 19.62 N·m.



6. Accessory

Hex-head wrench for M6 size 1 piece

7. Outline dimensions



SPECIFICATIONS

B-304Z-* -C

Spec. No. EN353304Z-C-G

3/3

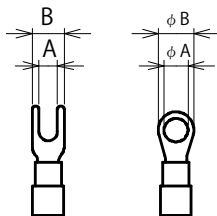
8. Schematics

| Terminal block | Cable color | Signal name | Terminal block | Cable color | Signal name |
|----------------|-------------|-------------------|----------------|-------------|-------------------|
| 1W to 4W | White | Input voltage(-) | RD | Red | Input voltage(+) |
| 1R to 4R | Red | Input voltage(+) | OR | Orange | Remote sensing(+) |
| 1G to 4G | Green | Output voltage(+) | BK | Black | Remote sensing(-) |
| 1B to 4B | Blue | Output voltage(-) | WH | White | Input voltage(-) |
| 1Y to 4Y | | Shield | GN | Green | Output voltage(+) |
| | | | BL | Blue | Output voltage(-) |
| | | | YE | | Shield |

(MinebeaMitsumi standard cable color)

Applicable solderless terminal

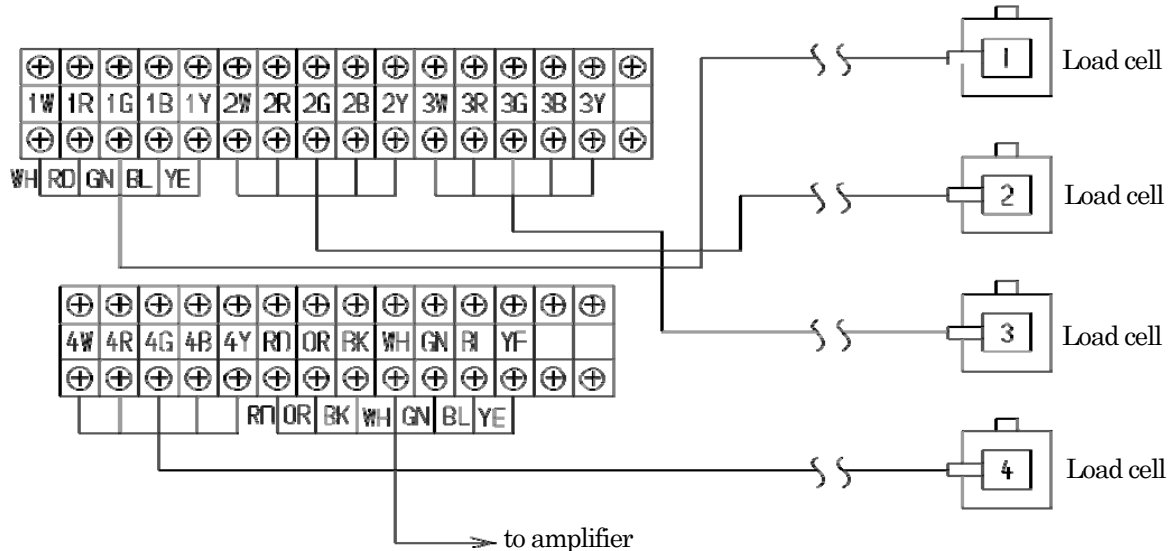
Recommended screw tightening torque 0.5 N·m



A: 3.2 mm or more
B: 7.0 mm or less

Y type Round type

(When using 6-cores cable, wiring orange to the same terminal of red, and black with white)



(When using 4-cores cable, wiring of orange and black is unnecessary.)

Specifications and outline dimensions and so on which have printed may subject to change for the purpose of improvement without notice.