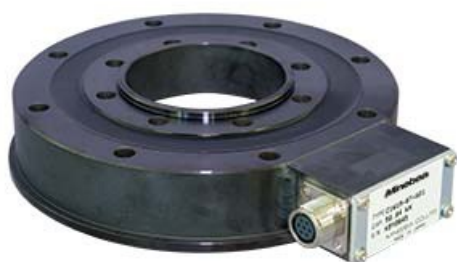


## Centre hole type C1W1M

2023/03/22

## Features



Canister, through-hole type.

Suitable for application in injection molding machines.

## Specification

Specification name	Specification contents
Rated capacity	58.84 kN{6 tf}~490.3 kN{50 tf}
Safe overload	150 %R.C.
Ultimate overload	150 %R.C.
Non-linearity	0.6 %R.O.
Hysteresis	0.6 %R.O.
Repeatability	0.2 %R.O.
Current output	4 mA ~ 20 mA (3 wires method, load resistance 500 ohm or less at 24 V)
Power supply voltage	DC 24 V(21.6 V ~ 26.4 V)
Temp. range, compensated	0 °C ~ 60 °C
Temp. range, safe	-10 °C ~ 70 °C
Temp. effect on zero	0.15 %R.O./10 °C
Temp. effect on output	0.15 %LOAD/10 °C
Class of protection	IP64 or equivalent

## Centre hole type C1W1M

2023/03/22

Class of protection	Material of element
	Alloy steel
Durability	1,000,000 times with rated load applied.

## Table of P/N

Parts No.	Rated capacity [N]	Rated capacity [kN]	Rated capacity [tf]	Weight(Approx.) [kg]	Natural frequency [Hz]	Rated displacement [mm]
C1W1M-6T-S01	58.84		6	4	2000	0.05
C1W1M-8T-S01		78.450	8	4	2000	0.05
C1W1M-15T-S01		147.100	15	7	2000	0.05
C1W1M-20T-S01		196.100	20	7	2000	0.05
C1W1M-34T-S01		333.400	34	18	2000	0.06
C1W1M-50T-S01		490.300	50	18	2000	0.06

Parts No.	Cable	3D CAD files [STEP]	CAD files[DXF]
C1W1M-6T-S01	φ4.7, 4-cores shielded5 m cable directly attached Y-type crimp terminal lugs attached at cable end.	<a href="#">C1W1M-6T-S01.STEP</a>	<a href="#">c1w1m_6t.dxf</a>
C1W1M-8T-S01	φ4.7, 4-cores shielded5 m cable directly attached Y-type crimp terminal lugs attached at cable end.	<a href="#">C1W1M-8T-S01.STEP</a>	<a href="#">c1w1m_6t.dxf</a>
C1W1M-15T-S01	φ4.7, 4-cores shielded5 m cable directly attached Y-type crimp terminal lugs attached at cable end.	<a href="#">C1W1M-15T-S01.STEP</a>	<a href="#">c1w1m_15t.dxf</a>
C1W1M-20T-S01	φ4.7, 4-cores shielded5 m cable directly attached Y-type crimp terminal lugs attached at cable end.	<a href="#">C1W1M-20T-S01.STEP</a>	<a href="#">c1w1m_15t.dxf</a>
C1W1M-34T-S01	φ4.7, 4-cores shielded5 m cable directly attached Y-type crimp terminal lugs attached at cable end.	<a href="#">C1W1M-34T-S01.STEP</a>	<a href="#">c1w1m_34t.dxf</a>
C1W1M-50T-S01	φ4.7, 4-cores shielded5 m cable directly attached Y-type crimp terminal lugs attached at cable end.	<a href="#">C1W1M-50T-S01.STEP</a>	<a href="#">c1w1m_34t.dxf</a>