

SPECIFICATION

Changeability type of the tie bar gage ring for inspection

1. GENERAL

The Tie bar gage ring is an attachment to measure clamping force and open force of molding die to install the Tie bar such as the injection molding machines.

2. SPECIFICATIONS

Parts No :TGRU-***
 Recommendation Tie bar size :Dia 35 to 85 mm, Dia 85 to 120 mm,
 Dia 120 to 170 mm, Dia 170 to 230 mm
 Material :Aluminum alloy (main body), Alloy steel (others)

3. Options

Tie bar gage :UX010
 Special indicator and Transmitter :TSD-591, CSD-592, CSA-591, CSA-592

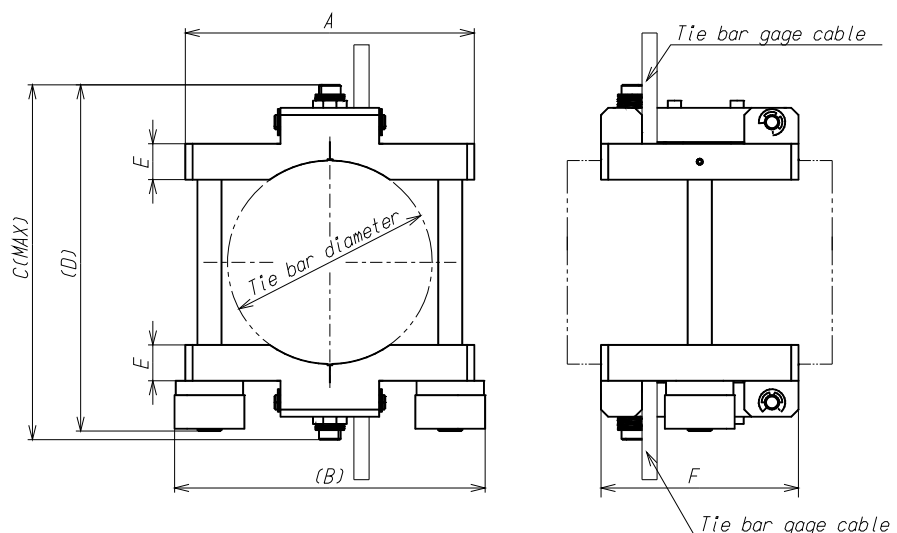


Fig.1 Out line dimension

Parts No	Tie bar size	A	B	C	D	E	F	Weight (Approx .kg)
TGRU-035/085	φ 35~85 mm	120	129	149	145	15	82	0.95
TGRU-085/120	φ 85~120 mm	155	164	183.2	180	15	82	1.3
TGRU-120/170	φ 120~170 mm	205	214	232.3	231.6	18	90	2.2
TGRU-170/230	φ 170~230 mm	265	274	293.2	291.6	18	90	2.6

Unit : mm

Note) Specifications and Outline dimensions and so on which have printed may subject to change for the purpose of improvement without notice.