

SPECIFICATIONS

Transmitter

CSA-528-80-4, CSA-528-80-2,
CSA-528

Specifications No. EN351528-C 1/3

1. General

The instrument is a transmitter for the application with strain gage applied transducers.

2. Specifications

- Bridge power supply DC10 V(+0.9 V, -0.2 V)
- Applicable transducers 1 piece of strain gage applied transducers(350 Ω) only.
- Input range 0.5 mV/V to 1.5 mV/V
- Sensitivity 10 V output at the input of 0.5 mV/V
- Sensitivity adjustable range 2 000 times Adjustable from 1/1 times to 1/4 times
- Output voltage ±10 V
- Output load resistor 2 kΩ or more
- Zero point adjustment range
Zero adjustment Adjustable ±0.25 mV/V with the trimmer
※Adjust the tare weight cancellation by monuting the resistor.
- Non-linearity 0.02 %F.S.
- Effect of temperature variation
Zero point ±1 μV/°C (Input conversion)
Sensitivity ±0.01 %F.S./°C
- CALIB 0.5 mV/V ±0.001 mV/V
- Frequency response 1 kHz(-3 dB ±1 dB)

3. General specifications

- Operating temperature/humidity range
Temperature -10 °C to 50 °C
Humidity 85 %RH or less (No condensing.)
- Power supply voltage DC24 V 100 mA
- Outline dimensions(W×H×D) 112 mm×135 mm×70 mm (CSA-528-80-4 case size)
72 mm×135 mm×70 mm (CSA-528-80-2 case size)
110 mm× 50 mm×20 mm (CSA-528)
- Weight Approx 800 g (CSA-528-80-4 case)
Approx 500 g (CSA-528-80-2 case)
Approx 50 g (CSA-528)
- Terminal board 231-610(WAGO)

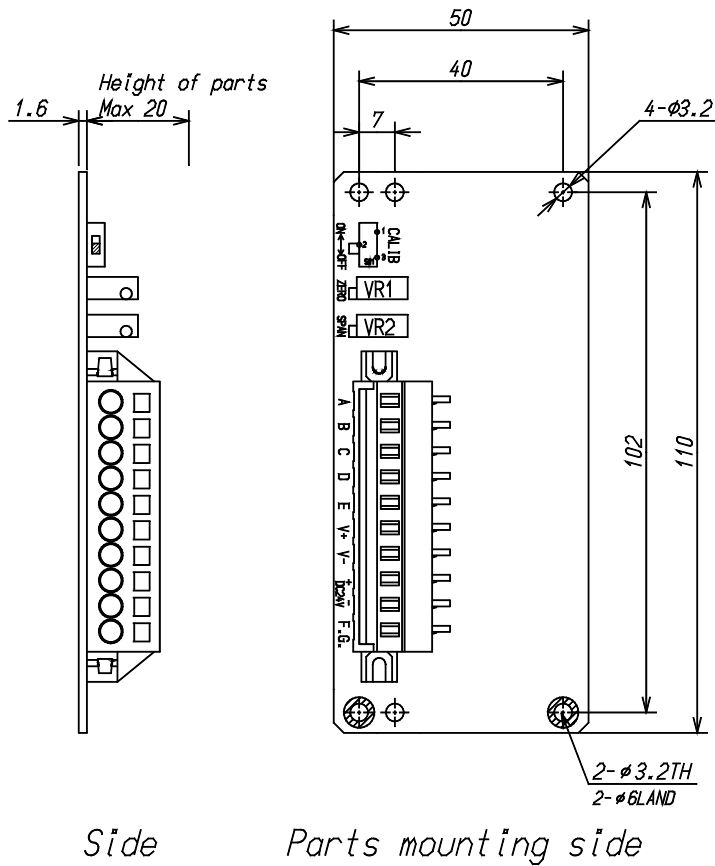
SPECIFICATIONS

CSA-528-80-4, CSA-528-80-2,
CSA-528

Specifications No. EN351528-C 2/3

4. Outline dimensions

P/N: CSA-528



Unit : mm

SPECIFICATIONS

CSA-528-80-4, CSA-528-80-2,
CSA-528

Specifications No. EN351528-C 3/3

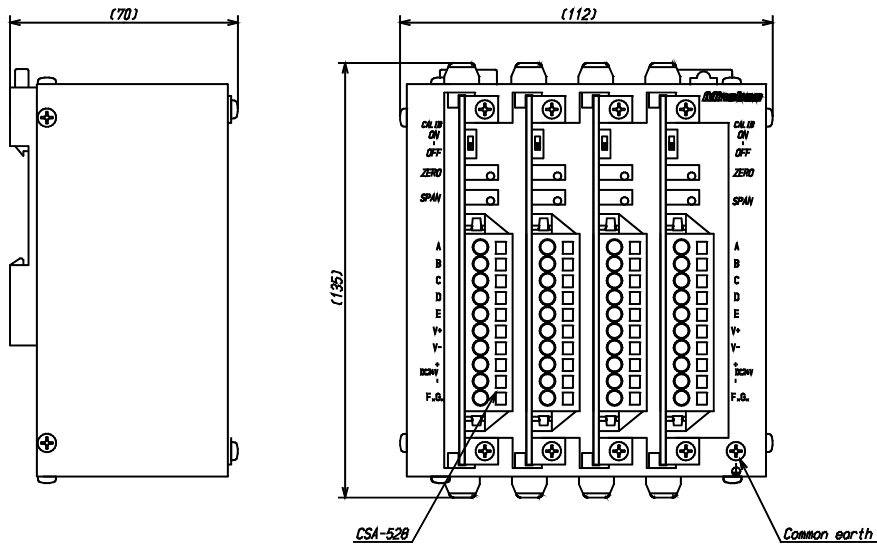
5. Case

The case is available for use to installing DIN rail.

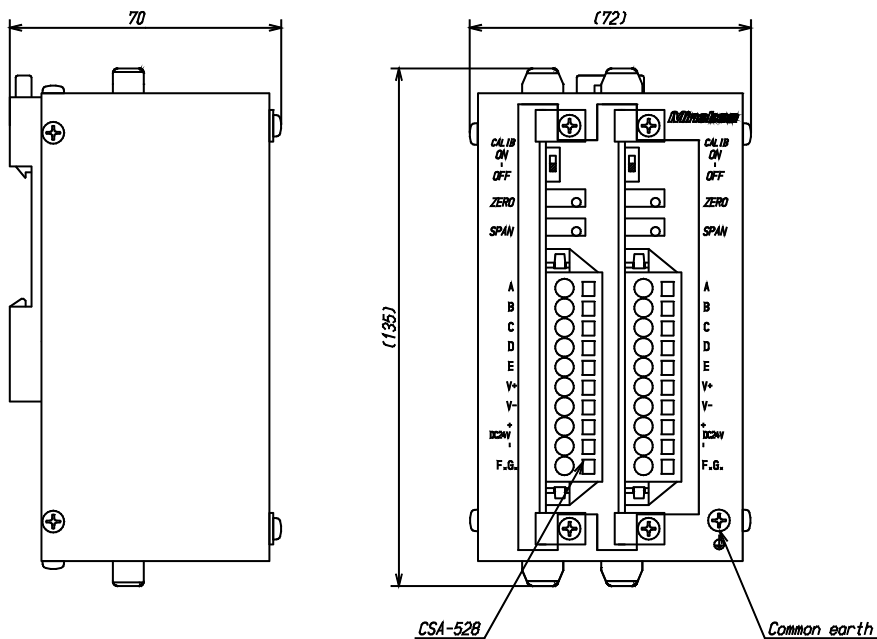
Never fail to connect earth cable with the common earth in front of the case.

It will be D type single earth.

P/N: CSA-528-80-4, Installed CSA-528, 4 pcs



P/N: CSA-528-80-2, Installed CSA-528, 2 pcs



Unit : mm