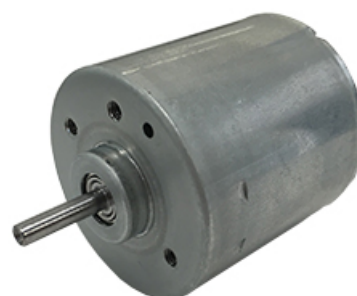


# DIX36(7W)

2023/03/22

## Overview



Motor Type : 3 Phase 4 holes inner rotor type DC Brushless Motor

High voltage and low voltage applicable : DC 24V ~ DC 105V

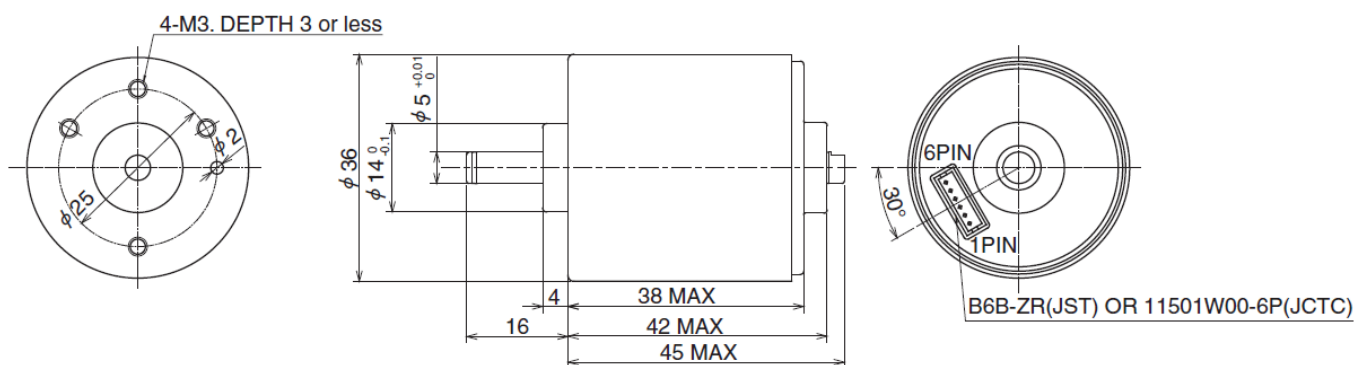
\*High voltage version is under development

Driver : Driver circuit external (Standard)

/ Driver circuit internal (DC24V, 7W)

Output power : 7W ~

## Overall View



## Major Characteristic Parameters

No load speed Γmin-11	5200
--------------------------	------

# DIX36(7W)

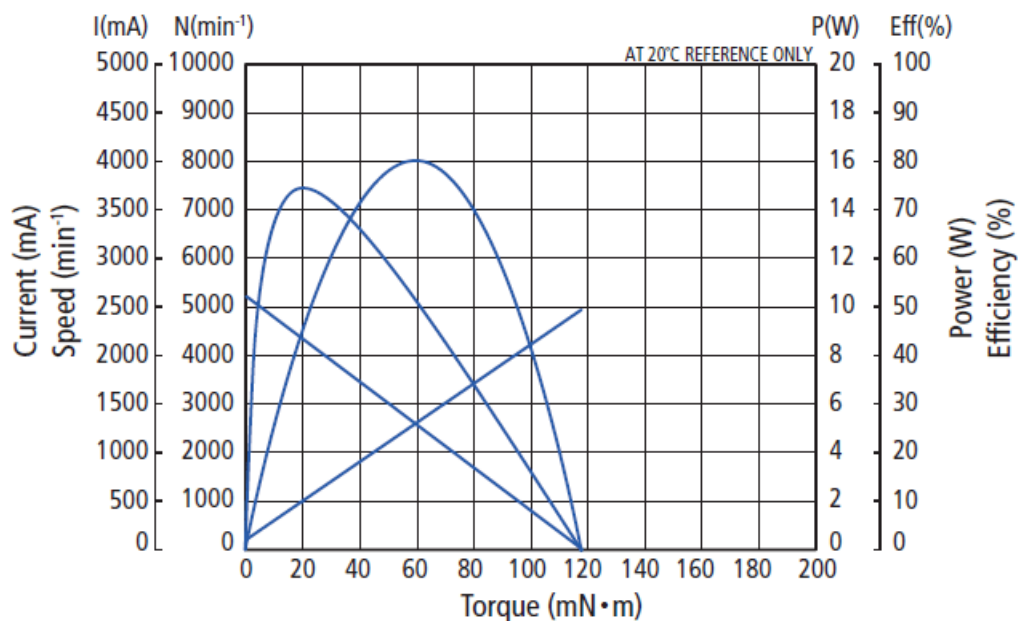
2023/03/22

Starting torque [mN · m]	120
Starting current [mA]	2500
Maximal efficiency [%]	74.5
Speed at maximal efficiency [min <sup>-1</sup> ]	4300
Life at 20 deg.C [hour]	5000

\*at 24V

Please contact our sales for detail specification & order lot QTY. (All custom product by customer's requirement)

## Property



## Gear Spec. (Option)

## DIX36(7W)

2023/03/22

Gear Ratio	Type	Material	Step	Length L1 [mm]	Total Length L1+motor [mm]	Rated Voltage [V]
1/25	Spur	Metal	2	23	64	24
1/30	Spur	Metal	2	23	64	24
1/50	Spur	Metal	3	25	66	24
1/60	Spur	Metal	3	25	66	24
1/84	Planetary	Metal	3	45	86	24

No Load Speed [min <sup>-1</sup> ]	No Load Current [mA]	Rated Load Torque [mN · m]	Rated Load Speed [min <sup>-1</sup> ]	Rated Load Current [mA]	Max Rated Load torque [mN · m]	Max Instant Torque [mN · m]
208	100	162	194	260	196	196
173	100	194	162	260	196	245
104	100	292	97	260	294	392
87	100	294	82	235	294	441
62	100	326	58	235	1000	1500

This is a typical example. Other gear ratios are also available.

The notation is the value of the standard type. The torque exceeding the notation can be coped by changing gear material or gear thickness.