

# M1N10

2023/03/22

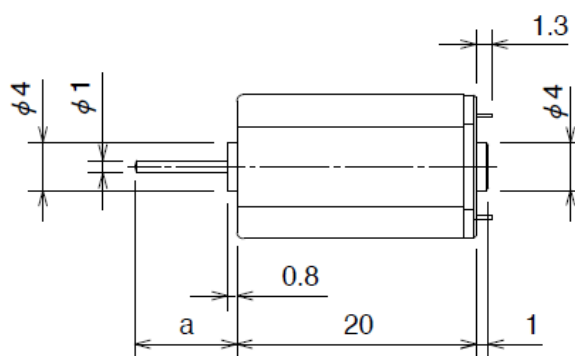
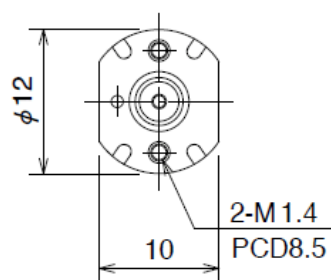
## Overview



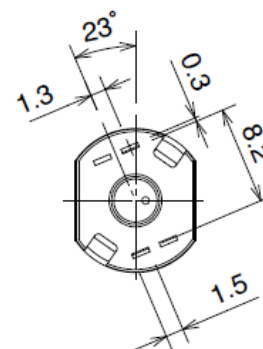
Shape : Flat

Shaft Length : a = 6.5mm, 8.5mm

## Overall View



a=6.5mm、7.5mm、8.5mm



Unit:mm

## Specifications

Model	Operating Voltage lower limit [V]	Operating Voltage upper limit [V]	Rated Voltage [V]	No load speed [min <sup>-1</sup> ]	No Load Current [mA]	Rated Load [gf·cm]

# M1N10

2023/03/22

M1N10FB08G	1.0	6.0	5.0	8324	16.0	3.06
M1N10FB09F	1.0	6.0	5.0	10822	23.0	3.06
M1N10FB95G	1.0	6.0	5.0	10377	24.0	3.06
M1N10FB10K	1.0	6.0	5.0	13316	36.0	3.06
M1N10FB11G	1.0	6.0	5.0	16040	36.0	3.06

Model	Rated Load [mN · m]	Rated Load Speed [min <sup>-1</sup> ]	Rated Load Current [mA]	Starting Torque [gf · cm]	Starting Torque [mN · m]	Starting current [mA]	Shaft Length [mm]
M1N10FB08G	0.30	6114	78	11.60	1.14	249	8.5
M1N10FB09F	0.30	8714	96	15.70	1.54	399	6.5
M1N10FB95G	0.30	8547	93	17.40	1.70	420	8.5
M1N10FB10K	0.30	11200	120	19.50	1.91	575	7.5
M1N10FB11G	0.30	13740	144	21.30	2.09	788	8.5

## Characteristics

