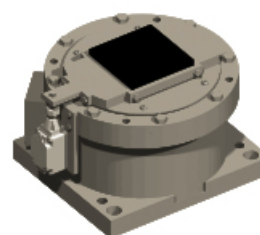


# BG Type

Push-Up Brake

2024/02/28

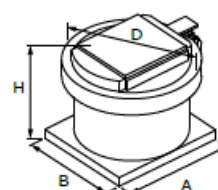
## Overview



This is a solenoid type push-up brake.

The rotating body is braked by pressing the brake shoe with electromagnetic force.

## Performance / Dimensions



Input Voltage [VDC]	DC 110
Dielectric strength [VAC]	AC2000 50/60Hz 1minute (b/w main unit and terminal)
Motion detection method	Limit switch

## Specifications

Model	Weight [kg]	Push-Up Force (@Ir) [N]	Power Consumption (@20°C) [W]	Time Rating [min]
BG25	75.00	650 min	550	15
BG63	105.00	2,000 min	500	30
BG100	130.00	3,000 min	630	45

# BG Type

Push-Up Brake

2024/02/28

BG160	180.00	5,500 min	690	45
BG250	300.00	8,500 min	810	45
BG25M	60.00	1,000 min	380	15
BG63M	75.00	2,400 min	420	15
BG100M	85.00	3,500 min	430	30
BG160M	120.00	6,500 min	450	30
BG250M	180.00	9,500 min	500	45

## Other Specifications

Model	Height H [mm]	Outside Dia. D [mm]	Flange A [mm]	Flange B [mm]	Brake Shoe H×W [mm]	Brake Shoe Wear allowance [mm]
BG25	275	250	250	230	100×100	9
BG63	297	286	286	250	130×130	9
BG100	307	300	300	280	140×140	9
BG160	313	382	382	316	200×160	9
BG250	350	450	450	380	240×200	9
BG25M	200	250	250	230	100×100	6
BG63M	200	286	286	250	130×130	6
BG100M	200	300	300	280	140×140	6
BG160M	200	382	382	316	200×160	6
BG250M	200	450	450	380	240×200	6