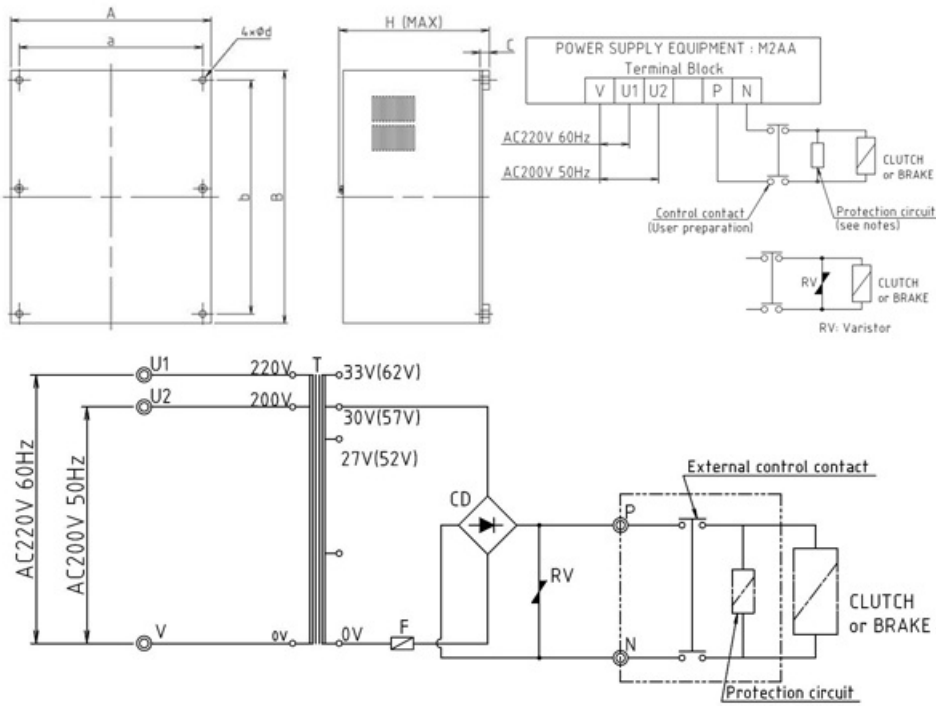


M-AA Type

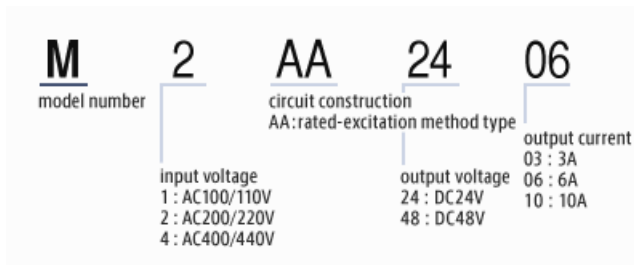
Power supply equipment

2024/02/28

Overall View



Part Number



Specifications

M-AA Type

Power supply equipment

2024/02/28

Model	Input Voltage AC [V]	Output voltage DC [V]	Output current [A]
M2AA2403	200/220	24	3
M2AA2406	200/220	24	6
M2AA2410	200/220	24	10
M2AA4803	200/220	48	3
M2AA4806	200/220	48	6
M2AA4810	200/220	48	10

Dimension

Model	Size a [mm]	Size b [mm]	Size d [mm]	Size A [mm]	Size B [mm]	Size C [mm]
M2AA2403	120	160	5	140	183	10
M2AA2406	150	200	8	170	223	11
M2AA2410	150	200	8	170	223	11
M2AA4803	150	200	8	170	223	11
M2AA4806	150	200	8	170	223	11
M2AA4810	180	230	8	200	253	11

Model	Size H [mm]
M2AA2403	120
M2AA2406	140
M2AA2410	140
M2AA4803	140
M2AA4806	140
M2AA4810	185

Notes

*Objects in long dashed double-short dashed lines are not included in this Power Supply Equipment.

*() are 48V type.

M-AA Type

Power supply equipment

2024/02/28

*◎are external connection terminal number.

T:transformer CD:diode bridge RV:varistor F:fuse
range of input voltage:AC200/220V ±10% 50/60Hz