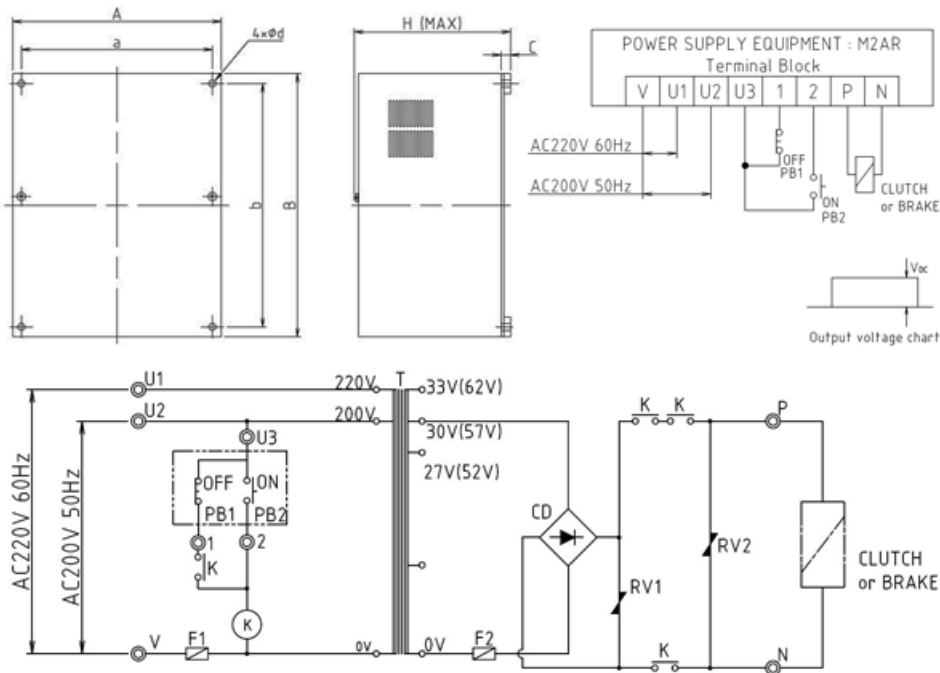


M-AR Type

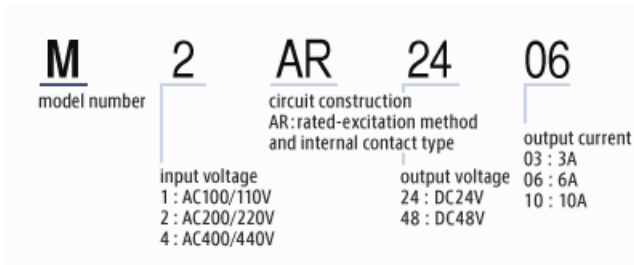
Power supply equipment

2024/02/28

Overall View



Part Number



Specifications

ミネベアミツミ株式会社

Copyright©MinebeaMitsumi Inc. All right reserved.

M-AR Type

Power supply equipment

2024/02/28

Model	Input Voltage AC [V]	Output voltage DC [V]	Output current [A]
M2AR2403	200/220	24	3
M2AR2406	200/220	24	6
M2AR2410	200/220	24	10
M2AR4803	200/220	48	3
M2AR4806	200/220	48	6
M2AR4810	200/220	48	10

Dimension

Model	Size a [mm]	Size b [mm]	Size d [mm]	Size A [mm]	Size B [mm]	Size C [mm]
M2AR2403	150	200	8	170	223	11
M2AR2406	150	200	8	170	223	11
M2AR2410	180	230	8	200	253	11
M2AR4803	150	200	8	170	223	11
M2AR4806	180	230	8	200	253	11
M2AR4810	220	280	8	240	303	11

Model	Size H [mm]
M2AR2403	140
M2AR2406	140
M2AR2410	185
M2AR4803	140
M2AR4806	185
M2AR4810	185

Notes

*Objects in long dashed double-short dashed lines are not included in this Power Supply Equipment.

*()are 48V type.

M-AR Type

Power supply equipment

2024/02/28

*◎are external connection terminal number.

T:transformer CD:diode bridge RV:varistor F:fuse

range of input voltage : AC200/220V ±10% 50/60Hz