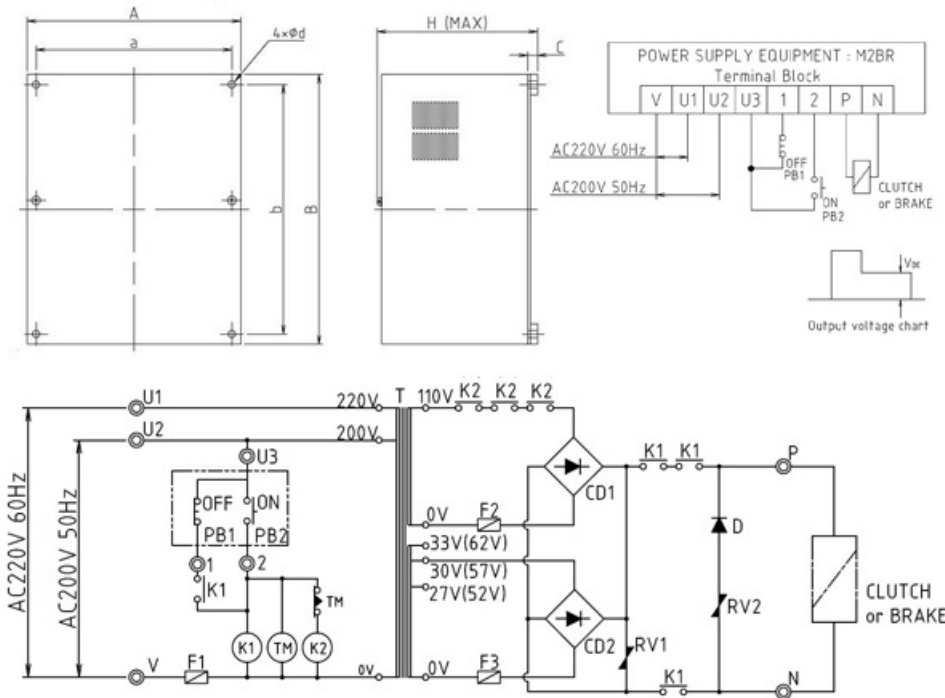


M-BR Type

Power supply equipment (built-in control contacts, over-excitation system)

2024/02/28

Overall View



Part Number

M	2	BR	24	06
model number		circuit construction BR: over-excitation method and internal contact type		output current
	input voltage 1 : AC100/110V 2 : AC200/220V 4 : AC400/440V		output voltage 24 : DC24V 48 : DC48V	03 : 3A 06 : 6A 10 : 10A

Specifications

M-BR Type

Power supply equipment (built-in control contacts, over-excitation system)

2024/02/28

Model	Time of instantaneous high voltage [s]	Input Voltage AC (50/60Hz) [V]	Output voltage DC [V]	Output current [A]
M2BR2403	1 (adjustable range0.1~1)	200/220	24	3
M2BR2406	1 (adjustable range0.1~1)	200/220	24	6
M2BR2410	1 (adjustable range0.1~1)	200/220	24	10
M2BR4803	1 (adjustable range0.1~1)	200/220	48	3
M2BR4806	1 (adjustable range0.1~1)	200/220	48	6
M2BR4810	1 (adjustable range0.1~1)	200/220	48	10

Dimension

Model	Size a [mm]	Size b [mm]	Size d [mm]	Size A [mm]	Size B [mm]	Size C [mm]
M2BR2403	220	280	8	240	303	11
M2BR2406	220	280	8	240	303	11
M2BR2410	260	340	8	280	363	11
M2BR4803	220	280	8	240	303	11
M2BR4806	220	280	8	240	303	11
M2BR4810	260	340	8	280	363	11

Model	Size H [mm]
M2BR2403	185
M2BR2406	185
M2BR2410	185
M2BR4803	185
M2BR4806	185
M2BR4810	185

Notes

M-BR Type

Power supply equipment (built-in control contacts, over-excitation system)

2024/02/28

NOTES

*Objects in long dashed double-short dashed lines are not included in this Power Supply Equipment.

*()are 48V type.

*◎are external connection terminal number.

T:transformer CD1,CD2:diode bridge K1,K2:magnetic contactor RV1,RV2:varistor F1,F2,F3:fuse TM:timer

range of input voltage : AC200/220V $\pm 10\%$ 50/60Hz

ambient temperature : -10deg .C \sim +40deg .C

over-excitation voltage:DC100V