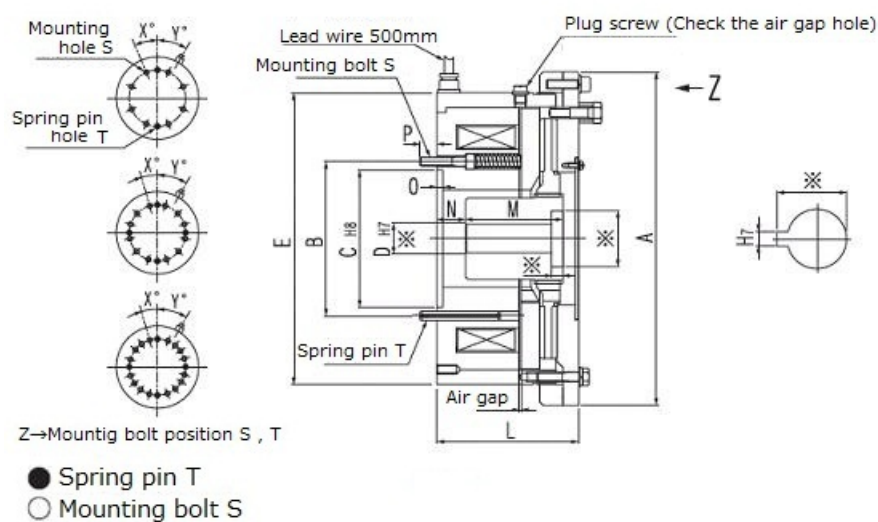


NAC Type

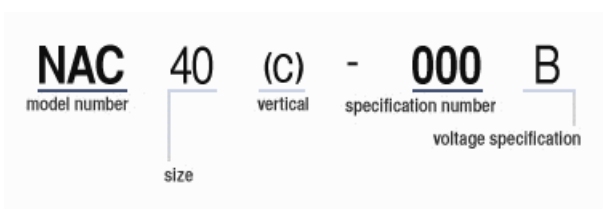
Spring actuated type electromagnetic brake

2023/03/22

Overall View



Part Number



Specifications

Model	Max Speed [min ⁻¹]	Weight [kg]	Static friction torque [N·m]	Coil 20deg.C Voltage DC [V]	Coil 20deg.C Wattage [W]	Coil 20deg.C Current [A]
NAC16	1800	16.80	160	24	87.0	3.61
NAC25	1800	23.00	250	24	118.0	4.90

NAC Type

Spring actuated type electromagnetic brake

2023/03/22

NAC40	1800	35.50	400	24	158.0	6.60
NAC63	1800	44.40	630	24	191.0	7.97
NAC100	1800	68.90	1000	48	250.0	5.18
NAC160	1800	140.00	1600	48	322.0	6.71
NAC250	1800	190.00	2500	48	372.0	7.75
NAC400	1600	220.00	4000	110	486.0	4.42
NAC630	1350	350.00	6300	110	517.0	4.70

Model	Air Gap Armature pull [mm]	Air Gap Armature Standard [mm]	Air Gap Release Max [mm]
NAC16	0	0.5	1.0
NAC25	0	0.6	1.2
NAC40	0	0.7	1.4
NAC63	0	0.8	1.6
NAC100	0	0.9	1.8
NAC160	0	1.1	2.1
NAC250	0	1.1	2.2
NAC400	0	1.3	2.3
NAC630	0	1.4	2.4

Diameter

Model	Diameter A [mm]	Diameter B [mm]	Diameter C H8 [mm]	Diameter D max H7 [mm]	Diameter D Pilot Hole H7 [mm]	Diameter E [mm]
NAC16	238	105.0	90	40	25	205
NAC25	260	115.0	100	45	20	226
NAC40	292	135.0	120	50	25	255
NAC63	328	155.0	130	55	25	290
NAC100	365	180.0	150	60	25	325
NAC160	485	230.0	260	85	40	425
NAC250	540	250.0	280	100	40	480
NAC400	640	280.0	310	115	50	545
NAC630	700	310.0	350	120	60	630

NAC Type

Spring actuated type electromagnetic brake

2023/03/22

Length

Model	Length L [mm]	Length M [mm]	Length N [mm]	Length O [mm]	Length P [mm]
NAC16	90.0	60.0	20.0	4.0	16.0
NAC25	105.0	75.0	18.0	4.0	14.4
NAC40	125.0	85.0	25.0	5.0	13.7
NAC63	128.0	94.0	25.0	5.0	14.5
NAC100	151.0	111.0	30.0	5.0	10.5
NAC160	181.0	118.0	23.0	8.0	8.5
NAC250	186.0	132.0	14.0	8.0	14.0
NAC400	200.0	140.0	13.0	8.0	22.0
NAC630	221.0	152.0	18.0	10.0	17.0

Other Specifications

Model	Moment of Inertia J [$\times 10^{-2} \text{kg} \cdot \text{m}^2$]	Angle X [deg.]	Angle Y [deg.]	Bolt S Screw Size	Bolt S Quantity	Combination Pin T Diameter
NAC16	0.125	22.5	30	M8	8	8
NAC25	0.325	15.0	30	M8	12	8
NAC40	0.750	15.0	30	M8	12	8
NAC63	1.500	15.0	30	M10	12	10
NAC100	2.750	15.0	30	M10	12	10
NAC160	14.800	15.0	30	M12	12	12
NAC250	23.800	18.0	30	M12	16	12
NAC400	43.300	18.0	30	M16	16	16
NAC630	91.300	18.0	30	M16	16	16

Model	Combination Pin T Quantity
NAC16	2
NAC25	2
NAC40	4

NAC Type

Spring actuated type electromagnetic brake

2023/03/22

NAC63	4
NAC100	4
NAC160	4
NAC250	4
NAC400	4
NAC630	4

Notes

- 1.Initial torque is 60% of rated torque
- 2.Since product with prepared coupling pin hole is delivered, it shall be processed at assembly.
- 3.Please indicate dimension of the part marked. (If nothing is indicated, product with prepared hole shall be delivered).
- 4.For this product, power unit of over excitation type which applies 2 - 4 times of rated voltage at power supply (approximately 1 second) shall be utilized.(Which shall be ordered separately with reference to electromagnetic clutch / electric component for brake.)