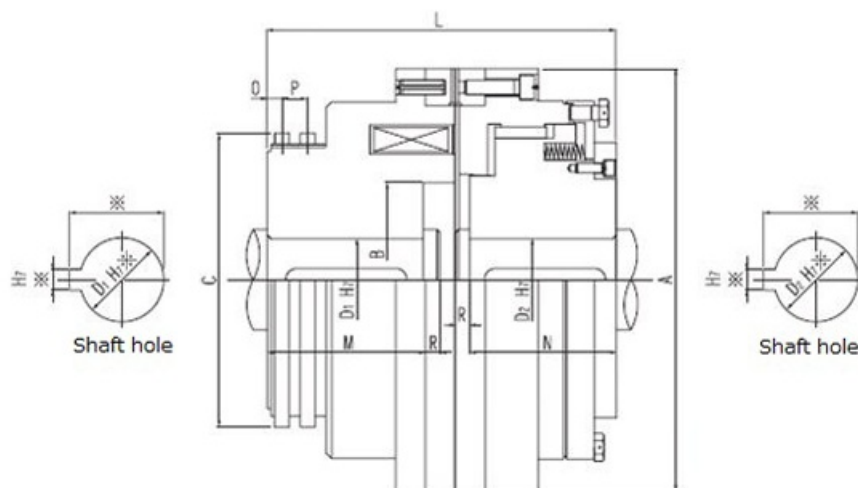


# ZAA Type

Electromagnetic toothed Clutch

2023/03/22

## Overall View



## Part Number

**ZAA**    16    -    000    B

model number    size    specification number    voltage specification

## Specifications

Model	Max Speed [min <sup>-1</sup> ]	Weight [kg]	Torque [N·m]	Coil 20deg.C Voltage DC [V]	Coil 20deg.C Wattage [W]	Coil 20deg.C Current [A]
ZAA16	5400	8.00	160	24	40.5	1.69
ZAA25	5000	12.00	250	24	32.0	1.33
ZAA40	4400	15.00	400	24	44.2	1.84

## ZAA Type

Electromagnetic toothed Clutch

2023/03/22

Model	Rated Torque [Nm]	Rated Power [W]	Rated Speed [rpm]	Rated Current [A]	Clutch Diameter [mm]	Clutch Thickness [mm]
ZAA63	4000	20.00	630	24	49.5	2.06
ZAA100	3600	25.00	1000	24	60.0	2.50
ZAA160	3200	39.00	1600	24	93.0	3.90
ZAA250	2900	50.00	2500	48	113.0	2.40
ZAA400	2700	66.00	4000	48	128.0	2.70
ZAA630	2400	100.00	6300	48	141.0	3.00
ZAA1000	2000	147.00	10000	48	205.0	4.30
ZAA1600	1700	218.00	16000	48	246.0	5.10
ZAA2500	1400	322.00	25000	48	358.0	7.50
ZAA4000	1300	520.00	40000	48	412.0	8.60
ZAA6300	1100	715.00	63000	110	475.0	4.32
ZAA10000	1000	1071.00	100000	110	600.0	5.45

Model	Brush Size	Air Gap Clutch Open [mm]
ZAA16	Gr05	0.5
ZAA25		0.5
ZAA40		0.5
ZAA63		0.5
ZAA100	Gr10	0.5
ZAA160		0.5
ZAA250		1.0
ZAA400		1.0
ZAA630		1.0
ZAA1000		1.0
ZAA1600	Gr10	1.0
ZAA2500		1.5
ZAA4000		1.5
ZAA6300	Gr20	1.5
ZAA10000		1.5

## Diameter

Model	Diameter A [mm]	Diameter B [mm]	Diameter C [mm]	Diameter D1 max H7 [mm]	Diameter D2 max H7 [mm]
ZAA16	140	60.0	90	45	45

## ZAA Type

Electromagnetic toothed Clutch

2023/03/22

ZAA10	170	90.0	90	70	70
ZAA25	150	63.0	110	50	50
ZAA40	170	74.0	120	60	60
ZAA63	190	86.0	132	70	70
ZAA100	210	96.0	145	80	80
ZAA160	230	106.0	160	90	90
ZAA250	260	122.0	180	100	100
ZAA400	290	131.0	200	110	110
ZAA630	330	151.0	230	130	130
ZAA1000	380	181.0	255	150	150
ZAA1600	440	210.0	295	180	180
ZAA2500	500	244.0	340	210	210
ZAA4000	560	274.0	395	230	230
ZAA6300	640	322.0	455	260	260
ZAA10000	740	363.0	455	320	320

## Length

Model	Length L [mm]	Length M [mm]	Length N [mm]	Length O [mm]	Length P [mm]	Length R [mm]
ZAA16	120.0	50.0	50.0	7.0	12.0	5.0
ZAA25	140.0	60.0	60.0	8.0	14.0	5.0
ZAA40	145.0	60.0	62.0	8.0	14.0	6.0
ZAA63	160.0	74.0	68.0	8.0	14.0	6.0
ZAA100	165.0	70.0	72.0	8.0	14.0	8.0
ZAA160	190.0	85.0	80.0	8.0	14.0	8.0
ZAA250	205.0	85.0	85.0	8.0	14.0	10.0
ZAA400	225.0	95.0	100.0	8.0	14.5	10.0
ZAA630	260.0	110.0	115.0	8.0	14.5	12.0
ZAA1000	290.0	125.0	130.0	12.0	20.0	12.0
ZAA1600	340.0	135.0	160.0	12.0	20.0	15.0
ZAA2500	380.0	155.0	180.0	12.0	20.0	15.0
ZAA4000	430.0	175.0	195.0	12.0	20.0	20.0
ZAA6300	490.0	200.0	230.0	18.0	24.0	20.0
ZAA10000	580.0	245.0	260.0	18.0	24.0	25.0

# ZAA Type

Electromagnetic toothed Clutch

2023/03/22

## Other Specifications

Model	Moment of Inertia J Armature Side [kg·m <sup>2</sup> ]	Moment of Inertia J Outer boss Side [kg·m <sup>2</sup> ]
ZAA16	0.0100	0.0100
ZAA25	0.0200	0.0150
ZAA40	0.0325	0.0250
ZAA63	0.0525	0.0425
ZAA100	0.0750	0.0625
ZAA160	0.1375	0.1125
ZAA250	0.2500	0.2000
ZAA400	0.4250	0.3250
ZAA630	0.8500	0.6500
ZAA1000	1.5750	1.1750
ZAA1600	3.2500	2.4250
ZAA2500	6.0000	5.0000
ZAA4000	12.2500	8.5000
ZAA6300	22.5000	18.7500
ZAA10000	37.5000	35.7500

## Notes

1. Please indicate dimension of the part marked. (If nothing is indicated, product with prepared hole shall be delivered).
2. In case quick response speed is required, power unit of over excitation type shall be utilized.
3. No power supply unit and power unit attached, which shall be ordered separately with reference to electromagnetic clutch / electric component for brake.