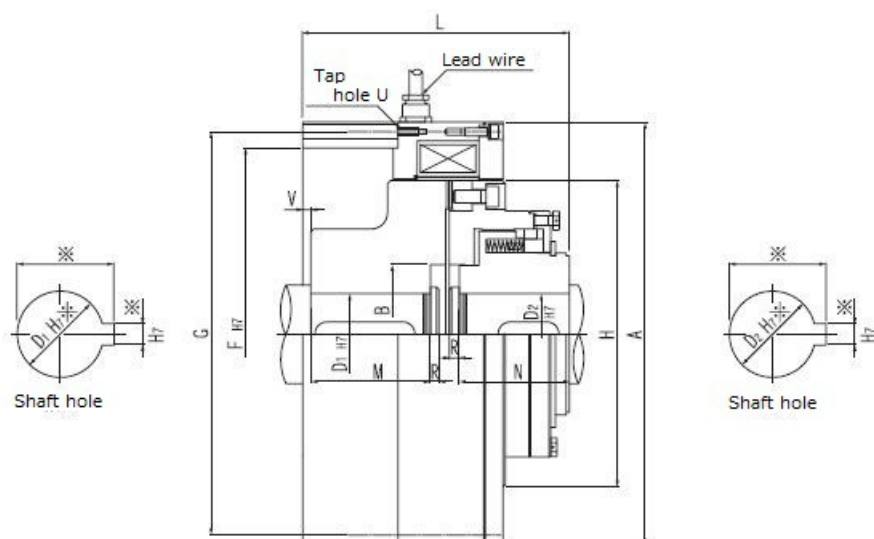


# ZCA Type

Electromagnetic toothed Clutch

2023/03/22

## Overall View



## Part Number

**ZCA** 16 - 000 B

model number size specification number voltage specification

## Specifications

Model	Max Speed [min <sup>-1</sup> ]	Weight [kg]	Torque [N·m]	Coil 20deg.C Voltage DC [V]	Coil 20deg.C Wattage [W]	Coil 20deg.C Current [A]
ZCA16	5400	17.00	160	24	109.0	4.53
ZCA25	5000	22.00	250	24	104.0	4.34

## ZCA Type

Electromagnetic toothed Clutch

2023/03/22

Model	Weight [g]	Clutch Diameter [mm]	Clutch Thickness [mm]	Clutch Teeth	Clutch Width [mm]	Clutch Height [mm]
ZCA25	5000	22.00	250	24	104.0	4.34
ZCA40	4400	26.00	400	24	126.0	5.24
ZCA63	4000	36.00	630	24	145.0	6.03
ZCA100	3600	50.00	1000	110	142.0	1.29
ZCA160	3200	66.00	1600	110	197.0	1.79
ZCA250	2900	95.00	2500	110	255.0	2.32
ZCA400	2700	123.00	4000	110	295.0	2.68
ZCA630	2400	210.00	6300	110	275.0	2.50
ZCA1000	2000	257.00	10000	110	412.0	3.75

Model	Air Gap Clutch Open [mm]
ZCA16	0.5
ZCA25	0.5
ZCA40	0.5
ZCA63	0.5
ZCA100	0.5
ZCA160	1.0
ZCA250	1.0
ZCA400	1.0
ZCA630	1.0
ZCA1000	1.0

## Diameter

Model	Diameter A [mm]	Diameter B [mm]	Diameter D1 max H7 [mm]	Diameter D2 max H7 [mm]	Diameter F H7 [mm]	Diameter G [mm]
ZCA16	195	60.0	45	45	170	183
ZCA25	210	63.0	50	50	180	197
ZCA40	240	74.0	60	60	210	228
ZCA63	262	86.0	70	70	230	250
ZCA100	290	96.0	80	80	25	276
ZCA160	320	106.0	90	90	280	302
ZCA250	360	122.0	100	100	315	340
ZCA400	400	131.0	110	110	350	380
ZCA630	450	151.0	130	130	390	425

## ZCA Type

Electromagnetic toothed Clutch

2023/03/22

Model	Length L [mm]	Length M [mm]	Length N [mm]	Length R [mm]	Length T [mm]	
ZCA1000	505	181.0	150	150	440	473
Model	Diameter H [mm]		Diameter U (Screw hole) [mm]			
ZCA16	140		4-M6			
ZCA25	150		4-M8			
ZCA40	170		4-M8			
ZCA63	190		6-M8			
ZCA100	210		4-M10			
ZCA160	230		6-M10			
ZCA250	260		6-M12			
ZCA400	290		8-M12			
ZCA630	330		6-M16			
ZCA1000	380		6-M16			

## Length

Model	Length L [mm]	Length M [mm]	Length N [mm]	Length R [mm]	Length T [mm]
ZCA16	125.0	50.0	50.0	5.0	5.0
ZCA25	145.0	60.0	60.0	5.0	5.0
ZCA40	150.0	60.0	62.0	6.0	5.0
ZCA63	165.0	74.0	68.0	6.0	5.0
ZCA100	175.0	70.0	72.0	8.0	10.0
ZCA160	200.0	85.0	80.0	8.0	10.0
ZCA250	215.0	85.0	85.0	10.0	10.0
ZCA400	235.0	95.0	100.0	10.0	10.0
ZCA630	270.0	110.0	115.0	12.0	10.0
ZCA1000	300.0	125.0	130.0	12.0	10.0

## Other Specifications

# ZCA Type

Electromagnetic toothed Clutch

2023/03/22

Model	Moment of Inertia J Armature Side [kg·m <sup>2</sup> ]	Moment of Inertia J Outer boss Side [kg·m <sup>2</sup> ]
ZCA16	0.0100	0.0150
ZCA25	0.0200	0.0200
ZCA40	0.0325	0.0350
ZCA63	0.0525	0.0600
ZCA100	0.0750	0.0100
ZCA160	0.1375	0.1650
ZCA250	0.2500	0.3000
ZCA400	0.4250	0.4750
ZCA630	0.8500	0.8750
ZCA1000	1.5750	1.7000

## Notes

1. Please indicate dimension of the part marked. (If nothing is indicated, product with prepared hole shall be delivered).
2. In case quick response speed is required, power unit of over excitation type shall be utilized. (Which shall be ordered separately with reference to electromagnetic clutch / electric component for brake.)