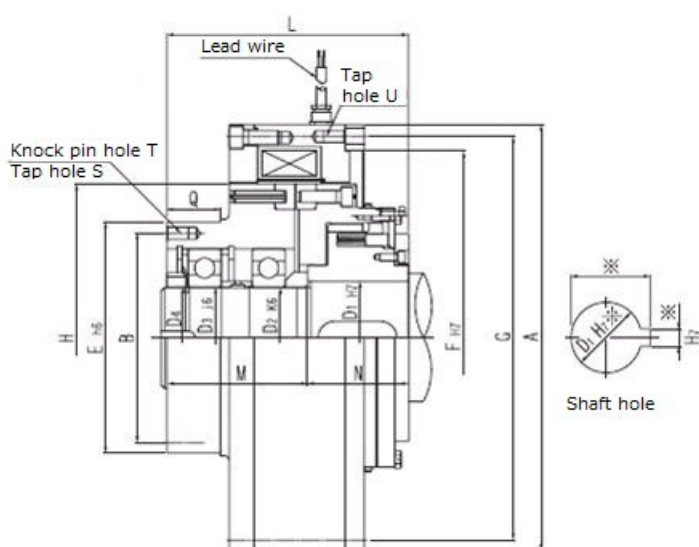


ZDA Type

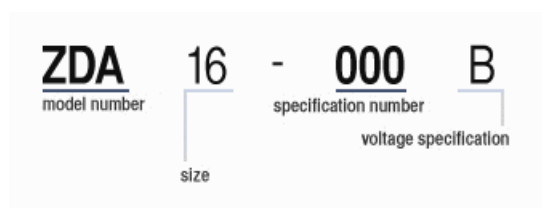
Electromagnetic toothed Clutch

2023/03/22

Overall View



Part Number



Specifications

Model	Max Speed [min ⁻¹]	Weight [kg]	Torque [N·m]	Coil 20deg.C Voltage DC [V]	Coil 20deg.C Wattage [W]	Coil 20deg.C Current [A]
ZDA16	4600	17.00	160	24	109.0	4.53
ZDA25	4300	23.00	250	24	104.0	4.34

ZDA Type

Electromagnetic toothed Clutch

2023/03/22

ZDA40	3800	27.00	400	24	126.0	5.24
ZDA63	3400	37.00	630	24	145.0	6.03
ZDA100	3000	51.00	1000	110	142.0	1.29
ZDA160	2700	67.00	1600	110	197.0	1.79
ZDA250	2400	95.00	2500	110	255.0	2.32
ZDA400	2200	123.00	4000	110	295.0	2.68
ZDA630	1900	185.00	6300	110	275.0	2.50
ZDA1000	1600	257.00	10000	110	412.0	3.75

Model	Air Gap Clutch Open [mm]
ZDA16	0.5
ZDA25	0.5
ZDA40	0.5
ZDA63	0.5
ZDA100	0.5
ZDA160	0.5
ZDA250	1.0
ZDA400	1.0
ZDA630	1.0
ZDA1000	1.0

Diameter

Model	Diameter A [mm]	Diameter B [mm]	Diameter D1 max H7 [mm]	Diameter D2 max [mm]	Diameter D3 max [mm]	Diameter E h6 [mm]
ZDA16	195	90.0	45	35	35	78
ZDA25	210	98.0	50	40	40	85
ZDA40	240	110.0	60	50	50	98
ZDA63	262	132.0	70	60	60	120
ZDA100	290	145.0	80	65	65	130
ZDA160	320	156.0	90	75	75	140
ZDA250	360	176.0	100	85	85	156
ZDA400	400	200.0	110	95	95	180
ZDA630	450	230.0	120	110	110	210

ZDA Type

Electromagnetic toothed Clutch

2023/03/22

Model	Diameter F H7 [mm]	Diameter G [mm]	Diameter H [mm]	Diameter S (Screw hole) [mm]	Diameter T (Dowel pin hole) [mm]	Diameter U (Screw hole) [mm]
ZDA1000	505	270.0	150	130	130	245
ZDA16	170	183	140	6-M8	3-ø8	4-M6
ZDA25	180	197	150	6-M8	3-ø8	4-M8
ZDA40	210	228	170	8-M8	4-ø8	4-M8
ZDA63	230	250	190	12-M8	6-ø8	6-M8
ZDA100	250	276	210	8-M10	4-ø10	4-M10
ZDA160	280	302	230	8-M12	4-ø10	6-M10
ZDA250	315	340	260	12-M12	6-ø12	6-M12
ZDA400	350	380	290	8-M16	4-ø16	8-M12
ZDA630	390	425	330	12-M16	6-ø16	6-M16
ZDA1000	440	473	380	8-M20	4-ø20	6-M16

Length

Model	Length L [mm]	Length M [mm]	Length N [mm]	Length Q [mm]
ZDA16	120.0	70.0	50.0	2.0
ZDA25	140.0	80.0	60.0	2.0
ZDA40	145.0	83.0	62.0	3.0
ZDA63	160.0	92.0	6.0	3.0
ZDA100	165.0	93.0	72.0	3.0
ZDA160	195.0	115.0	80.0	4.0
ZDA250	204.0	119.0	85.0	5.0
ZDA400	225.0	130.0	100.0	5.0
ZDA630	60.0	150.0	115.0	5.0
ZDA1000	290.0	165.0	130.0	5.0

Other Specifications

ミネベアミツミ株式会社

Copyright©MinebeaMitsumi Inc. All right reserved.

ZDA Type

Electromagnetic toothed Clutch

2023/03/22

Model	Moment of Inertia J Armature Side [kg·m ²]	Moment of Inertia J Outer boss Side [kg·m ²]
ZDA16	0.0125	0.0150
ZDA25	0.0200	0.0225
ZDA40	0.0325	0.0350
ZDA63	0.0525	0.0625
ZDA100	0.0875	0.1000
ZDA160	0.1400	0.1650
ZDA250	0.2500	0.3250
ZDA400	0.4500	0.4750
ZDA630	0.8750	0.9000
ZDA1000	1.6500	1.7000

Notes

1. Please indicate dimension of the part marked. (If nothing is indicated, product with prepared hole shall be delivered).
2. In case quick response speed is required, power unit of over excitation type shall be utilized. (Which shall be ordered separately with reference to electromagnetic clutch / electric component for brake.)