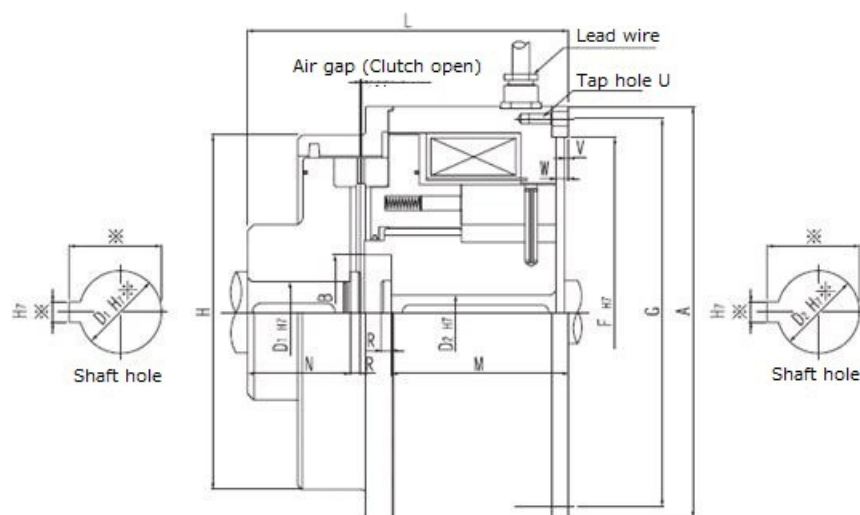


# ZGA Type

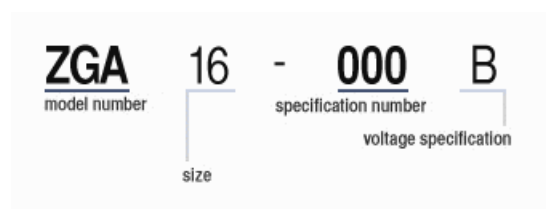
Electromagnetic toothed Clutch (Spring actuated type)

2023/03/22

## Overall View



## Part Number



## Specifications

Model	Max Speed [min <sup>-1</sup> ]	Weight [kg]	Torque [N·m]	Coil 20deg.C Voltage DC [V]	Coil 20deg.C Wattage [W]	Coil 20deg.C Current [A]
ZGA16	5000	23.00	160	24	118.0	4.92
ZGA25	4500	28.00	250	24	130.0	5.43

## ZGA Type

Electromagnetic toothed Clutch (Spring actuated type)

2023/03/22

ZGA40	4000	36.00	400	24	139.0	5.80
ZGA63	3600	48.00	630	24	158.6	6.61
ZGA100	3300	65.00	1000	110	189.0	1.72
ZGA160	2900	88.00	1600	110	253.0	2.30
ZGA250	2600	120.00	2500	110	305.0	2.77
ZGA400	2300	168.00	4000	110	366.0	3.33
ZGA630	2000	226.00	6300	110	402.0	3.66
ZGA1000	1700	327.00	10000	110	502.0	4.57

Model	Air Gap Clutch Open [mm]
ZGA16	0.5
ZGA25	0.5
ZGA40	0.6
ZGA63	0.6
ZGA100	0.6
ZGA160	0.7
ZGA250	0.7
ZGA400	0.7
ZGA630	0.8
ZGA1000	0.8

## Diameter

Model	Diameter A [mm]	Diameter B [mm]	Diameter D1 max H7 [mm]	Diameter D2 max H7 [mm]	Diameter F H7 [mm]	Diameter G [mm]
ZGA16	200	56.0	45	45	170	188
ZGA25	215	0.0	50	50	185	203
ZGA40	240	73.0	60	60	210	225
ZGA63	265	87.0	70	70	230	248
ZGA100	295	96.0	80	80	250	275
ZGA160	330	105.0	90	90	290	310
ZGA250	365	120.0	100	100	310	340
ZGA400	415	130.0	110	110	350	385
ZGA630	465	150.0	130	130	400	435

## ZGA Type

Electromagnetic toothed Clutch (Spring actuated type)

2023/03/22

Model	Diameter H [mm]	Diameter U (Screw hole) [mm]
ZGA16	150	4-M6
ZGA25	170	4-M8
ZGA40	190	4-M8
ZGA63	210	6-M8
ZGA100	230	4-M10
ZGA160	260	6-M10
ZGA250	290	6-M12
ZGA400	330	8-M12
ZGA630	410	6-M16
ZGA1000	440	6-M16

## Length

Model	Length L [mm]	Length M [mm]	Length N [mm]	Length R [mm]	Length V [mm]	Length W [mm]
ZGA16	156.0	80.0	50.0	5.0	2.0	4
ZGA25	166.0	85.0	55.0	5.0	2.0	4
ZGA40	179.0	90.0	60.0	6.0	3.0	6
ZGA63	189.0	95.0	65.0	6.0	3.0	6
ZGA100	214.0	110.0	70.0	8.0	3.0	6
ZGA160	232.0	120.0	75.0	8.0	4.0	8
ZGA250	252.0	125.0	85.0	10.0	4.0	8
ZGA400	280.0	135.0	95.0	10.0	5.0	10
ZGA630	305.0	145.0	110.0	12.0	5.0	10
ZGA1000	340.0	155.0	130.0	12.0	5.0	10

## Other Specifications

Moment of Inertia J Armature Side	Moment of Inertia J Outer boss Side
-----------------------------------	-------------------------------------

## ZGA Type

Electromagnetic toothed Clutch (Spring actuated type)

2023/03/22

Model	[kg·m <sup>2</sup> ]	[kg·m <sup>2</sup> ]
ZGA16	0.0250	0.0125
ZGA25	0.0475	0.0200
ZGA40	0.0700	0.0325
ZGA63	0.1175	0.0500
ZGA100	0.1925	0.1375
ZGA160	0.3500	0.1500
ZGA250	0.6500	0.2250
ZGA400	1.0500	0.4500
ZGA630	1.9000	0.9000
ZGA1000	3.5000	1.7000

### Notes

1. Please indicate dimension of the part marked. (If nothing is indicated, product with prepared hole shall be delivered).
2. In case quick response speed is required, power unit of over excitation type shall be utilized. (Which shall be ordered separately with reference to electromagnetic clutch / electric component for brake.)