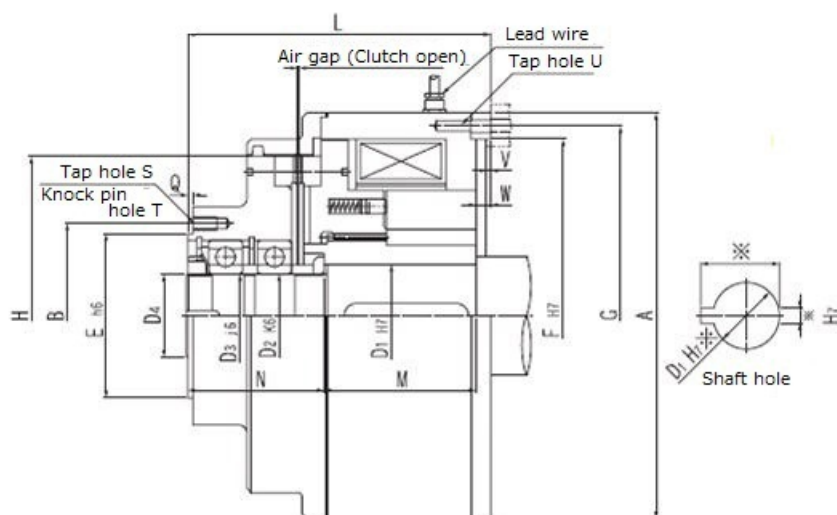


ZHA Type

Electromagnetic toothed Clutch (Spring actuated type)

2023/03/22

Overall View



Part Number

ZHA 16 - 000 B
 model number size specification number voltage specification

Specifications

Model	Max Speed [min-1]	Weight [kg]	Torque [N·m]	Coil 20deg.C Voltage DC [V]	Coil 20deg.C Wattage [W]	Coil 20deg.C Current [A]
ZHA16	4800	23.00	160	24	118.0	4.92
ZHA25	4200	29.00	250	24	130.0	5.43

ZHA Type

Electromagnetic toothed Clutch (Spring actuated type)

2023/03/22

ZHA40	3800	37.00	400	24	139.0	5.80
ZHA63	3400	49.00	630	24	158.6	6.61
ZHA100	3000	66.00	1000	110	189.0	1.72
ZHA160	2700	90.00	1600	110	253.0	2.30
ZHA250	2400	124.00	2500	110	305.0	2.77
ZHA400	2200	170.00	4000	110	366.0	3.33
ZHA630	1900	232.00	6300	110	402.0	3.66
ZHA1000	1600	334.00	10000	110	502.0	4.57

Model	Air Gap Clutch Open [mm]
ZHA16	0.5
ZHA25	0.5
ZHA40	0.6
ZHA63	0.6
ZHA100	0.6
ZHA160	0.7
ZHA250	0.7
ZHA400	0.7
ZHA630	0.8
ZHA1000	0.8

Diameter

Model	Diameter A [mm]	Diameter B [mm]	Diameter D1 max H7 [mm]	Diameter D2 max [mm]	Diameter D3 max [mm]	Diameter E h6 [mm]
ZHA16	200	90.0	45	35	35	78
ZHA25	215	98.0	50	40	40	85
ZHA40	240	110.0	60	50	50	98
ZHA63	265	132.0	70	60	60	120
ZHA100	295	145.0	80	65	65	130
ZHA160	330	156.0	90	75	75	140
ZHA250	365	176.0	100	85	85	160
ZHA400	415	200.0	110	95	95	180
ZHA630	465	230.0	130	110	110	210

ZHA Type

Electromagnetic toothed Clutch (Spring actuated type)

2023/03/22

Model	Diameter F H7 [mm]	Diameter G [mm]	Diameter H [mm]	Diameter S (Screw hole) [mm]	Diameter T (Dowel pin hole) [mm]	Diameter U (Screw hole) [mm]
ZHA16	170	188	150	6-M8	3-ø8	4-M6
ZHA25	185	203	170	6-M8	3-ø8	4-M8
ZHA40	210	225	190	8-M8	4-ø8	4-M8
ZHA63	230	248	210	12-M8	6-ø8	6-M8
ZHA100	250	275	230	8-M10	4-ø10	4-M10
ZHA160	290	310	260	8-M12	4-ø12	6-M10
ZHA250	310	340	290	12-M12	6-ø12	6-M12
ZHA400	350	385	330	8-M16	4-ø16	8-M12
ZHA630	400	435	380	12-M16	6-ø16	6-M16
ZHA1000	465	495	440	8-M20	4-ø20	6-M16

Length

Model	Length L [mm]	Length M [mm]	Length N [mm]	Length Q [mm]	Length V [mm]	Length W [mm]
ZHA16	156.0	80.0	70.0	2.0	2.0	4
ZHA25	166.0	85.0	75.0	2.0	2.0	4
ZHA40	179.0	90.0	85.0	3.0	3.0	6
ZHA63	189.0	95.0	85.0	3.0	3.0	6
ZHA100	214.0	110.0	95.0	3.0	3.0	6
ZHA160	242.0	120.0	110.0	4.0	4.0	8
ZHA250	252.0	125.0	117.0	4.0	4.0	8
ZHA400	280.0	135.0	135.0	5.0	5.0	10
ZHA630	305.0	145.0	150.0	5.0	5.0	10
ZHA1000	340.0	155.0	175.0	5.0	5.0	10

Other Specifications

ZHA Type

Electromagnetic toothed Clutch (Spring actuated type)

2023/03/22

Model	Moment of Inertia J Armature Side [kg·m ²]	Moment of Inertia J Outer boss Side [kg·m ²]
ZHA16	0.0275	0.0125
ZHA25	0.0475	0.0225
ZHA40	0.0725	0.0325
ZHA63	0.1200	0.0550
ZHA100	0.1950	0.0900
ZHA160	0.3500	0.1500
ZHA250	0.6500	0.2250
ZHA400	1.0750	0.4000
ZHA630	1.9500	0.8250
ZHA1000	3.6000	1.8250

Notes

1. Please indicate dimension of the part marked (If nothing is indicated, product with prepared hole shall be delivered).
2. In case quick response speed is required, power unit of over excitation type shall be utilized. (Which shall be ordered separately with reference to electromagnetic clutch / electric component for brake.)