

□25mm(2 fingers)

2024/02/28

## Features

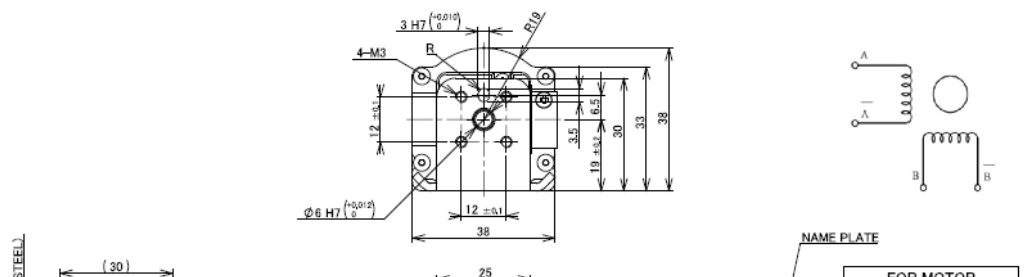
- Adopts a unique spiral cam drive type (design registered), and highly reliable due to its simple structure.
- Rotation of the cam directly to the motor shaft.
- High mechanical efficiency using High-precision MinebeaMitsumi ball bearings.
- Smaller, lighter and more reliable than typical electric grippers due to it is not a complex mechanism using gears or worm gears.
- Small and lightweight design with cam mechanism enables multisided mounting of robot arms.

## Specification

Stroke [mm]	13
Grip force lower limit [N]	2.0
Grip force upper limit [N]	6.0
Repetitive positioning accuracy [mm]	±0.02
Weight [g]	190

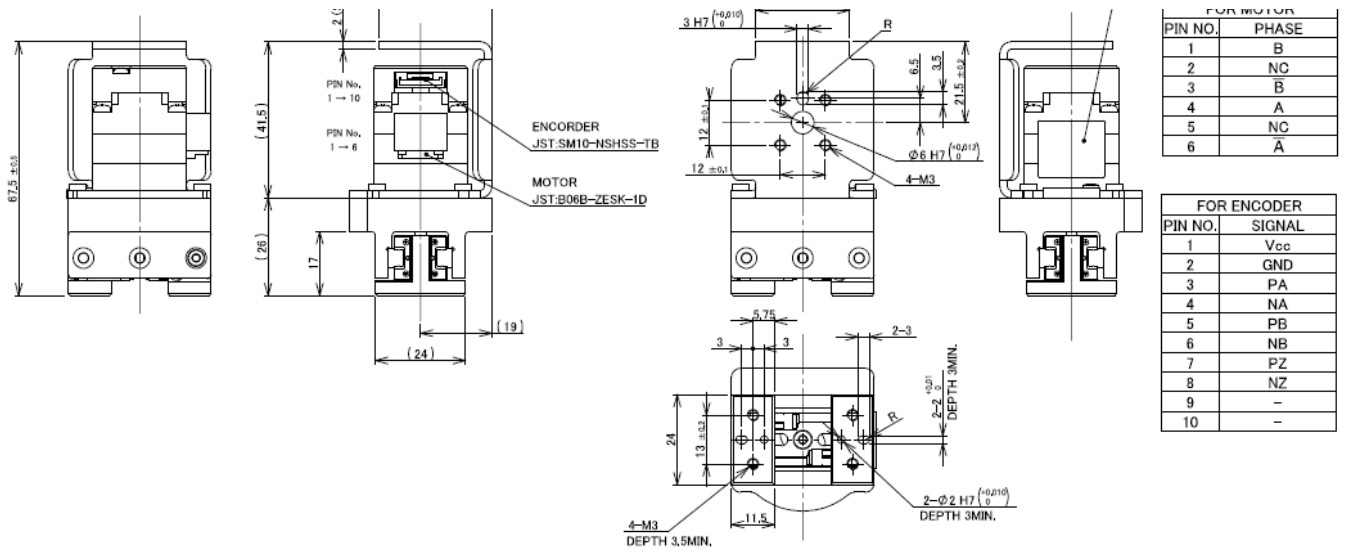
Specifications are subject to change without notice.

## Overall View



□25mm(2 fingers)

2024/02/28



## Latest News

2023.05.10

[Movie] "High-performance gripper with "fingertip delicacy" and "precision"

[All News](#)

## Case Studies

□25mm(2 fingers)

2024/02/28

**we can customize to meet your various requests! [Stepping motors]**