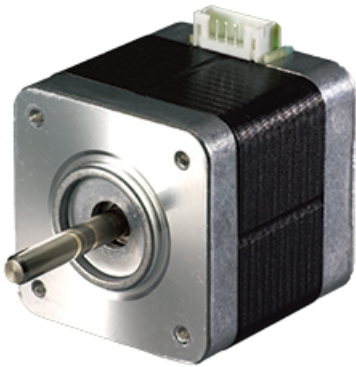


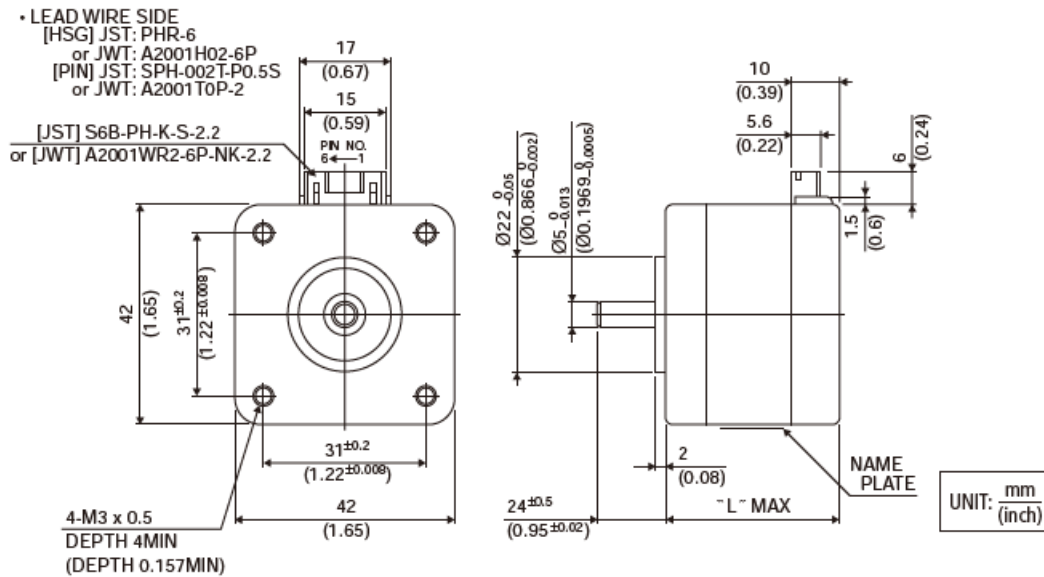
17PM-K(42□ 1.8°)

2024/02/28

Appearance



Overall View



Size

17PM-K(42□ 1.8°)

2024/02/28

| Model | size "L" [mm] | size "L" [Inch] |
|-----------|------------------|--------------------|
| 17PM-K7** | 26.0 | 1.02 |
| 17PM-K2** | 30.0 | 1.18 |
| 17PM-K0** | 34.0 | 1.34 |
| 17PM-K3** | 38.0 | 1.50 |
| 17PM-K1** | 42.0 | 1.65 |
| 17PM-K4** | 48.0 | 1.89 |
| 17PM-KA** | 60.0 | 2.36 |

Wiring Diagram

| PHASE | A | A COM | A/ | B | B COM | B/ |
|---------|---|-------|----|---|-------|----|
| PIN NO. | 4 | 5 | 6 | 3 | 2 | 1 |

Specifications

| Model | Outer Diameter [mm] | Step Angle [°] | Drive Sequence | Rated Current [A] | Resistance [ohms] | Holding Torque [mN · m] |
|------------|------------------------|-------------------|----------------|----------------------|----------------------|----------------------------|
| 17PM-K044U | 42.0 | 1.800 | UNI-POLAR | 1.20 | 2.30 | 200 |
| 17PM-K049U | 42.0 | 1.800 | UNI-POLAR | 1.00 | 3.20 | 200 |
| 17PM-K064U | 42.0 | 1.800 | UNI-POLAR | 0.60 | 8.30 | 200 |
| 17PM-K142U | 42.0 | 1.800 | UNI-POLAR | 1.40 | 2.30 | 280 |
| 17PM-K149U | 42.0 | 1.800 | UNI-POLAR | 1.00 | 4.30 | 280 |
| 17PM-K249U | 42.0 | 1.800 | UNI-POLAR | 0.80 | 2.70 | 100 |
| 17PM-K264U | 42.0 | 1.800 | UNI-POLAR | 0.60 | 6.90 | 100 |
| 17PM-K342U | 42.0 | 1.800 | UNI-POLAR | 1.40 | 2.00 | 250 |
| 17PM-K349U | 42.0 | 1.800 | UNI-POLAR | 1.00 | 3.60 | 250 |
| 17PM-K442U | 42.0 | 1.800 | UNI-POLAR | 1.40 | 2.80 | 400 |
| 17PM-K449U | 42.0 | 1.800 | UNI-POLAR | 1.00 | 4.90 | 400 |

17PM-K(42□ 1.8°)

2024/02/28

| | | | | | | |
|------------|------|-------|-----------|------|------|-----|
| 17PM-K749U | 42.0 | 1.800 | UNI-POLAR | 0.90 | 2.20 | 50 |
| 17PM-K764U | 42.0 | 1.800 | UNI-POLAR | 0.60 | 5.60 | 50 |
| 17PM-KA39U | 42.0 | 1.800 | UNI-POLAR | 1.40 | 2.90 | 485 |
| 17PM-KA46U | 42.0 | 1.800 | UNI-POLAR | 1.00 | 5.60 | 485 |
| 17PM-K053B | 42.0 | 1.800 | BI-POLAR | 1.20 | 2.20 | 270 |
| 17PM-K058B | 42.0 | 1.800 | BI-POLAR | 1.00 | 3.00 | 270 |
| 17PM-K046B | 42.0 | 1.800 | BI-POLAR | 0.80 | 5.00 | 270 |
| 17PM-K049B | 42.0 | 1.800 | BI-POLAR | 0.70 | 6.40 | 270 |
| 17PM-K051B | 42.0 | 1.800 | BI-POLAR | 0.65 | 7.80 | 270 |
| 17PM-K149B | 42.0 | 1.800 | BI-POLAR | 1.40 | 2.20 | 380 |
| 17PM-K142B | 42.0 | 1.800 | BI-POLAR | 1.00 | 4.60 | 380 |
| 17PM-K249B | 42.0 | 1.800 | BI-POLAR | 0.60 | 5.40 | 140 |
| 17PM-K348B | 42.0 | 1.800 | BI-POLAR | 1.40 | 1.80 | 310 |
| 17PM-K353B | 42.0 | 1.800 | BI-POLAR | 1.20 | 2.50 | 310 |
| 17PM-K342B | 42.0 | 1.800 | BI-POLAR | 0.90 | 4.00 | 310 |
| 17PM-K349B | 42.0 | 1.800 | BI-POLAR | 0.70 | 7.40 | 310 |
| 17PM-K448B | 42.0 | 1.800 | BI-POLAR | 1.50 | 2.40 | 500 |
| 17PM-K442B | 42.0 | 1.800 | BI-POLAR | 0.90 | 5.60 | 500 |
| 17PM-K749B | 42.0 | 1.800 | BI-POLAR | 0.60 | 4.40 | 65 |
| 17PM-KA45B | 42.0 | 1.800 | BI-POLAR | 1.50 | 2.70 | 610 |
| 17PM-KA39B | 42.0 | 1.800 | BI-POLAR | 1.00 | 6.00 | 610 |

| Model | Inductance [mH] | Rotor Inertia [g · cm ²] | Detent Torque [mN · m] | Mass [g] |
|------------|--------------------|---|---------------------------|-------------|
| 17PM-K044U | 2.2 | 37.0 | 11.0 | 200 |
| 17PM-K049U | 3.2 | 37.0 | 11.0 | 200 |
| 17PM-K064U | 8.1 | 37.0 | 11.0 | 200 |
| 17PM-K142U | 3.2 | 62.0 | 11.8 | 300 |
| 17PM-K149U | 6.0 | 62.0 | 11.8 | 300 |
| 17PM-K249U | 3.0 | 24.0 | 4.3 | 180 |
| 17PM-K264U | 7.4 | 24.0 | 4.3 | 180 |
| 17PM-K342U | 2.5 | 50.0 | 11.3 | 250 |
| 17PM-K349U | 4.7 | 50.0 | 11.3 | 250 |
| 17PM-K442U | 3.4 | 75.0 | 16.7 | 350 |
| 17PM-K449U | 6.5 | 75.0 | 16.7 | 350 |
| 17PM-K749U | 1.6 | 11.0 | 2.8 | 150 |
| 17PM-K764U | 4.1 | 11.0 | 2.8 | 150 |
| 17PM-KA39U | 4.0 | 120.0 | 21.6 | 490 |
| 17PM-KA46U | 8.1 | 120.0 | 21.6 | 490 |
| 17PM-K053B | 4.6 | 37.0 | 11.0 | 200 |

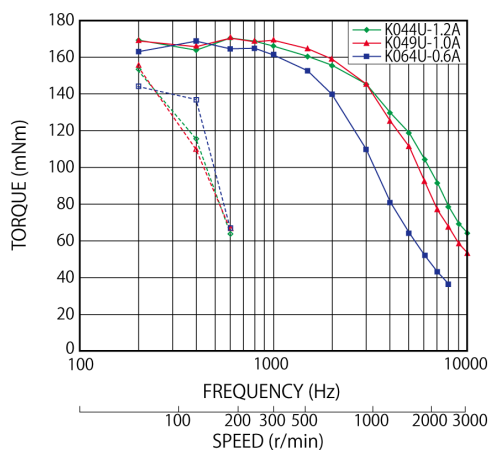
17PM-K(42□ 1.8°)

2024/02/28

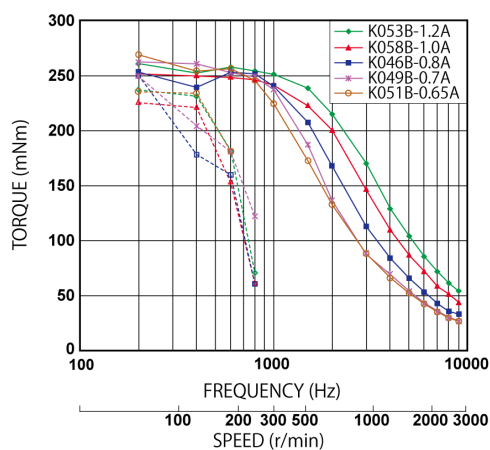
| | | | | |
|------------|------|-------|------|-----|
| 17PM-K058B | 6.4 | 37.0 | 11.0 | 200 |
| 17PM-K046B | 10.3 | 37.0 | 11.0 | 200 |
| 17PM-K049B | 12.8 | 37.0 | 11.0 | 200 |
| 17PM-K051B | 15.9 | 37.0 | 11.0 | 200 |
| 17PM-K149B | 6.1 | 62.0 | 11.8 | 300 |
| 17PM-K142B | 12.9 | 62.0 | 11.8 | 300 |
| 17PM-K249B | 12.0 | 24.0 | 4.3 | 180 |
| 17PM-K348B | 4.3 | 50.0 | 11.3 | 250 |
| 17PM-K353B | 6.2 | 50.0 | 11.3 | 250 |
| 17PM-K342B | 9.9 | 50.0 | 11.3 | 250 |
| 17PM-K349B | 18.0 | 50.0 | 11.3 | 250 |
| 17PM-K448B | 5.8 | 75.0 | 16.7 | 350 |
| 17PM-K442B | 13.6 | 75.0 | 16.7 | 350 |
| 17PM-K749B | 6.4 | 11.0 | 2.8 | 150 |
| 17PM-KA45B | 7.5 | 120.0 | 21.6 | 490 |
| 17PM-KA39B | 15.9 | 120.0 | 21.6 | 490 |

Torque/Speed Characteristics

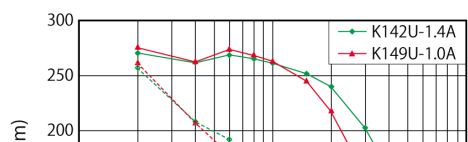
Model No: 17PM-K044U,K049U,K064U
 Driver: Chopper Dual
 Supply Voltage: 24.0 (Volt)



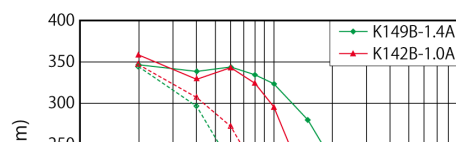
Model No: 17PM-K053B,K058B,K046B,K049B,K051B
 Driver: Chopper Dual
 Supply Voltage: 24.0 (Volt)



Model No: 17PM-K142U,K149U
 Driver: Chopper Dual
 Supply Voltage: 24.0 (Volt)

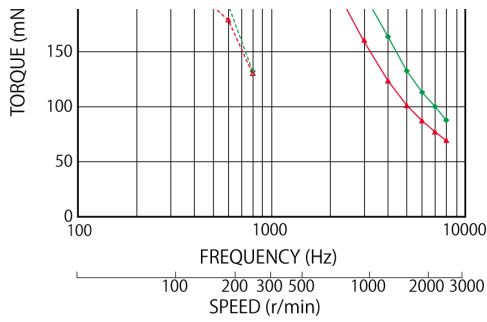


Model No: 17PM-K149B,K142B
 Driver: Chopper Dual
 Supply Voltage: 24.0 (Volt)

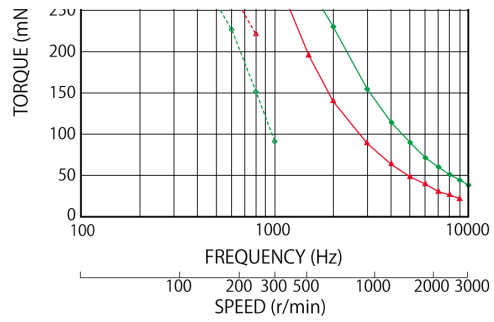


17PM-K(42□ 1.8°)

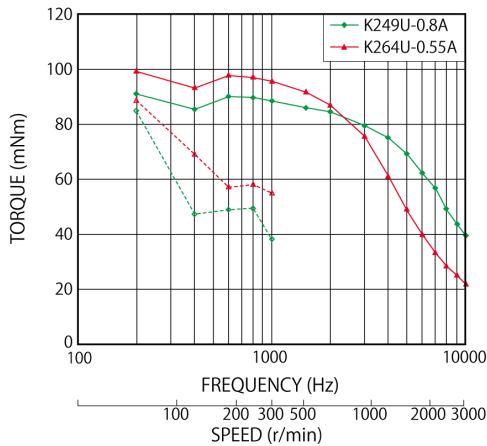
2024/02/28



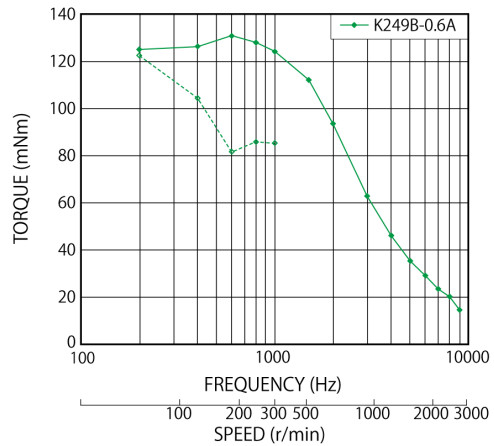
Model No: 17PM-K249U, K264U
Driver: Chopper Dual
Supply Voltage: 24.0 (Volt)



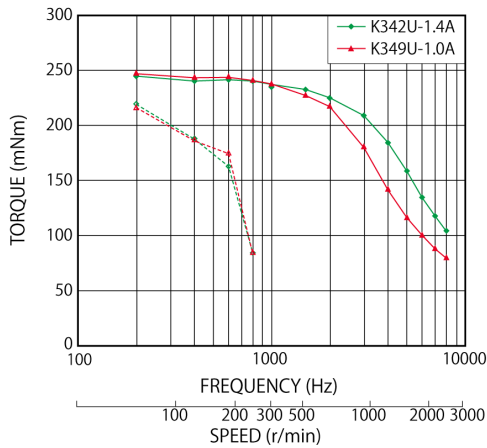
Model No: 17PM-K249B
Driver: Chopper Dual
Supply Voltage: 24.0 (Volt)



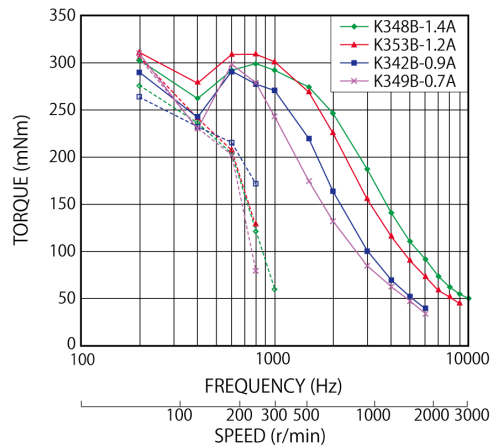
Model No: 17PM-K342U, K349U
Driver: Chopper Dual
Supply Voltage: 24.0 (Volt)



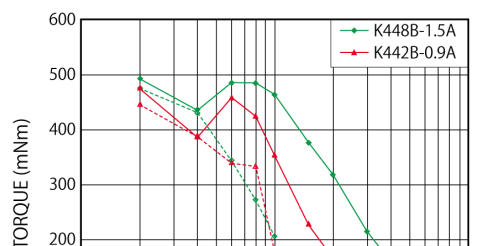
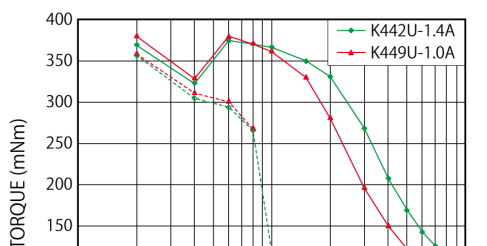
Model No: 17PM-K348B, K353B, K342B, K349B
Driver: Chopper Dual
Supply Voltage: 24.0 (Volt)



Model No: 17PM-K442U, K449U
Driver: Chopper Dual
Supply Voltage: 24.0 (Volt)

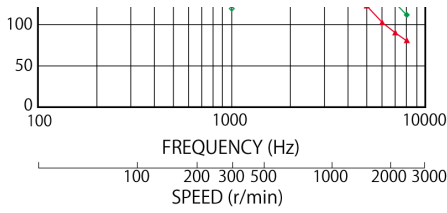


Model No: 17PM-K448B, K442B
Driver: Chopper Dual
Supply Voltage: 24.0 (Volt)

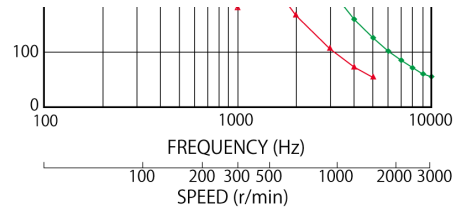
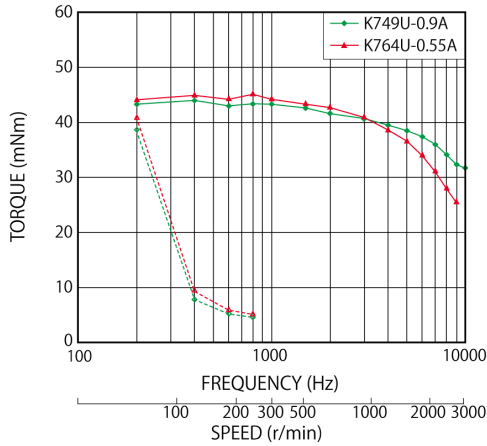


17PM-K(42□ 1.8°)

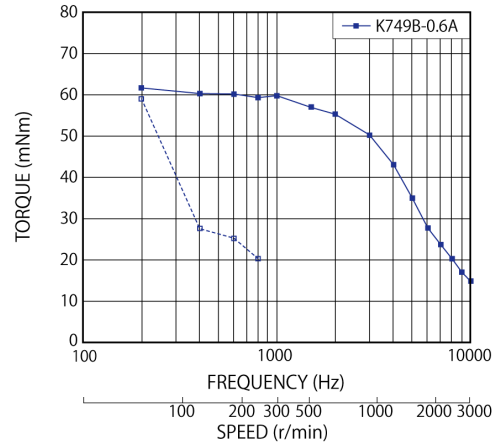
2024/02/28



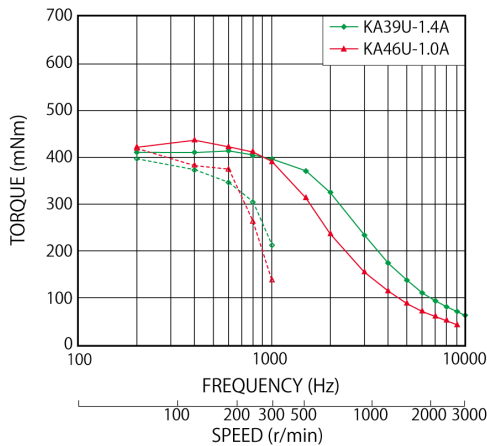
Model No: 17PM-K749U, K764U
 Driver: Chopper Dual
 Supply Voltage: 24.0 (Volt)



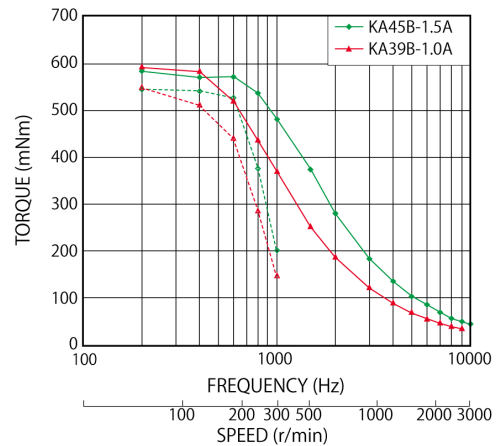
Model No: 17PM-K749B
 Driver: Chopper Dual
 Supply Voltage: 24.0 (Volt)



Model No: 17PM-KA39U, KA46U
 Driver: Chopper Dual
 Supply Voltage: 24.0 (Volt)



Model No: 17PM-KA45B, KA39B
 Driver: Chopper Dual
 Supply Voltage: 24.0 (Volt)



— : PULL OUT
 - - - : PULL IN

17PM-K(42□ 1.8°)

2024/02/28

Case Studies

We can customize to meet your various requests! [Stepping motors]