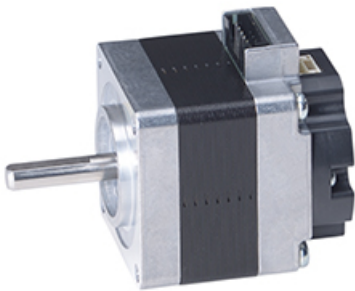


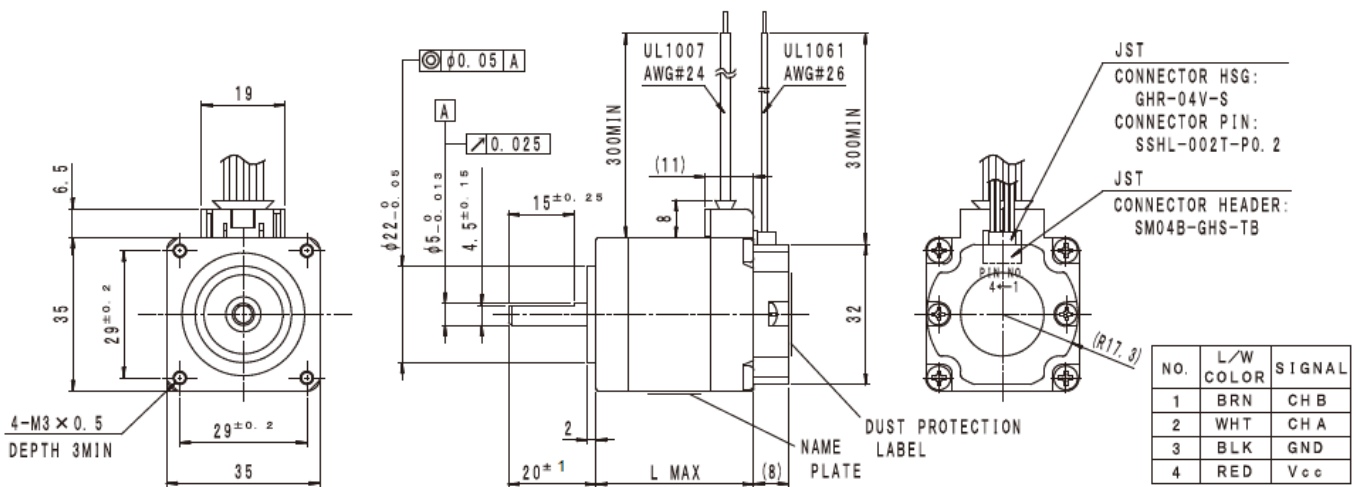
A14PM(IG Series)

2024/02/28

Appearance



Overall View



Wiring Diagram Image

ユニポーラ結線図 UNI POLAR Wiring Connection Diagram

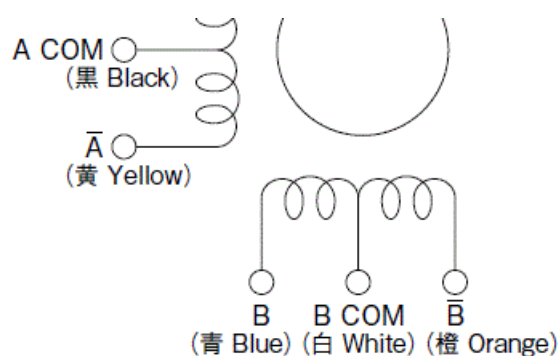


ミネベアミツミ株式会社

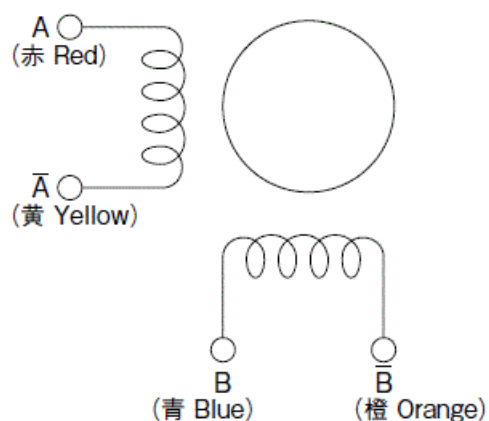
Copyright©MinebeaMitsumi Inc. All right reserved.

A14PM(IG Series)

2024/02/28



■ バイポーラ結線図 BI POLAR Wiring Connection Diagram



Specifications

Model	Outer Diameter [mm]	Step Angle [°]	Drive Sequence	Rated Current [A]	Resistance [ohms]	Holding Torque [mN · m]
A14PMF647B	35.0	1.800	BI-POLAR	1.50	1.20	130
A14PMF150B	35.0	1.800	BI-POLAR	1.50	1.80	230
A14PMF447B	35.0	1.800	BI-POLAR	1.50	2.20	400

Model	Inductance [mH]	Rotor Inertia [g · cm ²]	Detent Torque [mN · m]	Encoder Resolution [CPR]	Mass [g]
A14PMF647B	1.2	15.0	5.3	400	160
A14PMF150B	2.6	20.0	8.2	400	190
A14PMF447B	3.7	43.0	13.7	400	300

A14PM(IG Series)

2024/02/28

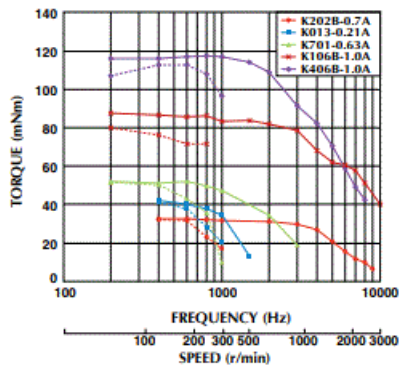
Encoder Specifications

Item	specifications
ENCODER TYPE	INCREMENTAL
DETECTION METHOD	REFLECTIVE SURFACE
OUTPUT SEAL	A, B (TWO CHANNEL)
RESOLUTION	400 CPR
SUPPLY VOLTAGE	DC 5V ± 0.5 V
OUTPUT VOLTAGE	-0.5V to +5.5V
WAVE FORM	RECTANGLE WAVE
COUT FREQUENCY	30 kHz MAX.

Torque/Speed Characteristics

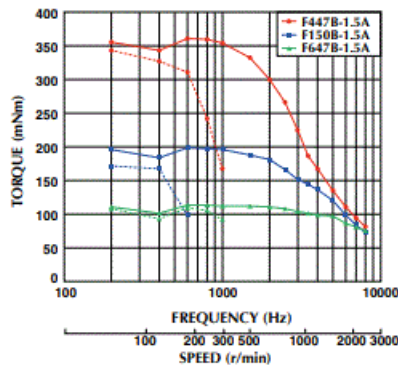
25 mm (A10PM)

Model No: A10PMK202B,013B,K701B,K106B,K406B
Driver: Chopper Dual
Supply Voltage: 24.0 (Volt)



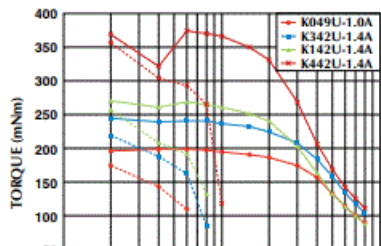
35 mm (A14PM)

Model No: A14PMF447B,F150B,F647B(ハイボラ)
Driver: SEK682-001-E (2-2φ ON)
Supply Voltage: 24.0 (Volt)

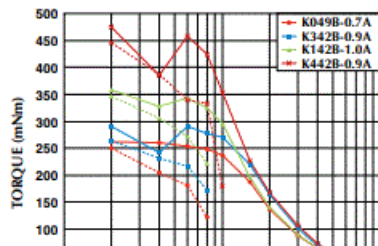


42 mm (A17PM)

Model No: A17PMK049U,K342U,K142U,K442U(ユニボラ)
Driver: Chopper Dual
Supply Voltage: 24.0 (Volt)

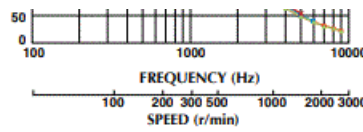
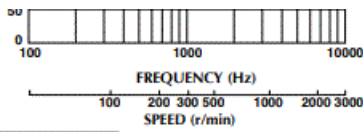


Model No: A17PMK049B,K342B,K142B,K442B(ハイボラ)
Driver: Chopper Dual
Supply Voltage: 24.0 (Volt)



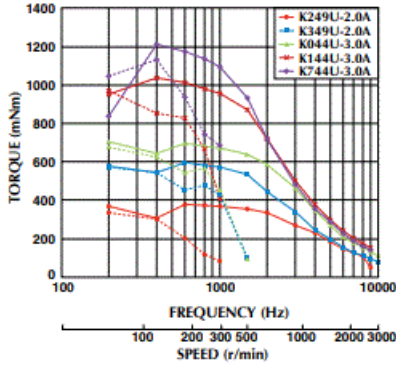
A14PM(IG Series)

2024/02/28

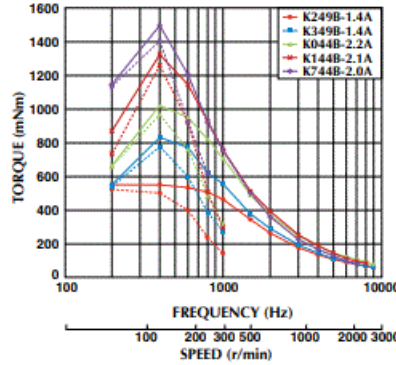


56 mm (A23KM)

Model No: A23KM249U,K349U,K044U,K144U,K744U(ユニポーラ)
 Driver: Chopper Dual
 Supply Voltage: 24.0 (Volt)



Model No: A23KM249B,K349B,K044B,K144B,K744B(バイポーラ)
 Driver: Chopper Dual
 Supply Voltage: 24.0 (Volt)



— : PULL OUT
 ---- : PULL IN

- トルク特性は当社測定による参考データで、保証値ではありません。また、条件が変化すると、特性が変化する場合があります。
- Torque/Speed characteristics are for reference only and it may change when operated at different drive conditions.
- このカタログに掲載している製品の性能及び仕様は、改換の旨予告なく変更することがありますのでご了承ください。
- Specifications are subject to change without notice.

Case Studies

We can customize to meet your various requests! [Stepping motors]