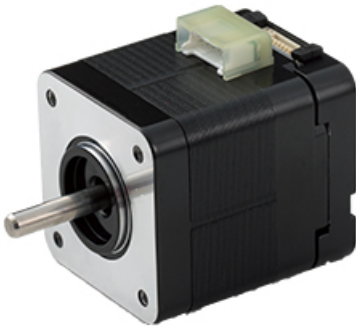


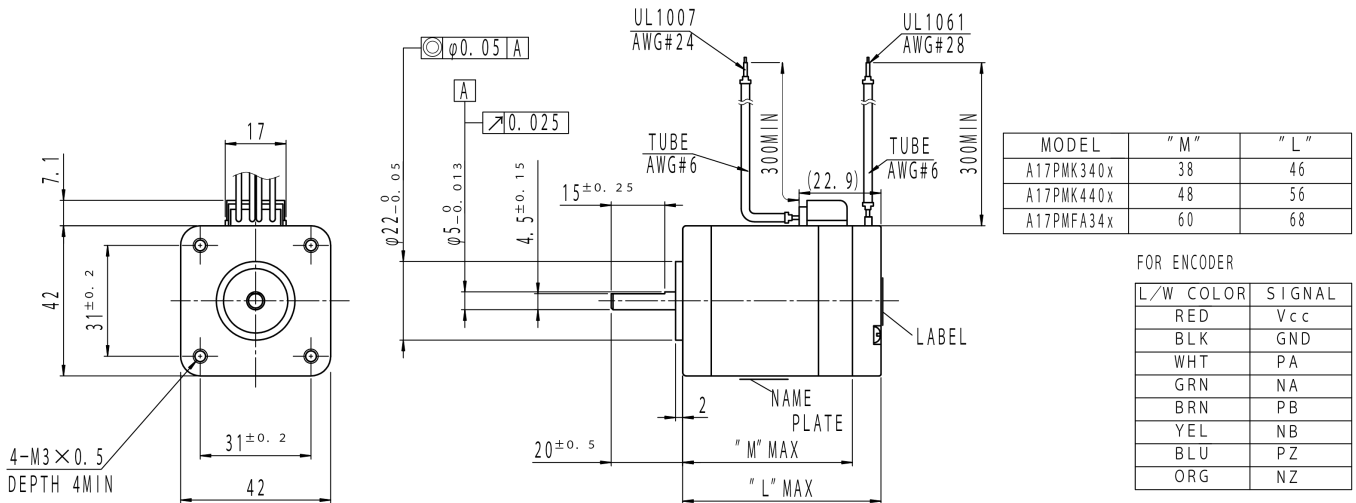
A17PM(SZ Series)

2024/02/28

Appearance



Overall View

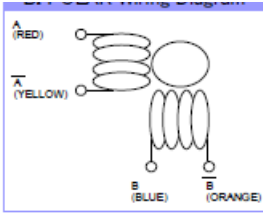


Wiring Diagram Image

BI POLAR Wiring Diagram

A17PM(SZ Series)

2024/02/28



Specifications

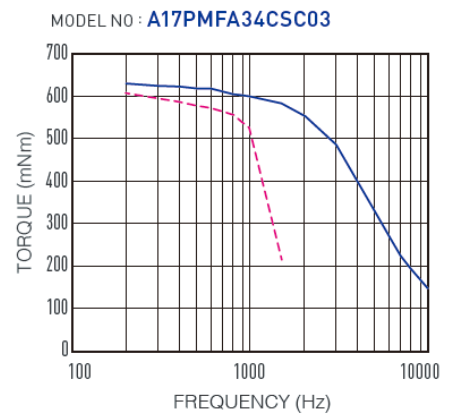
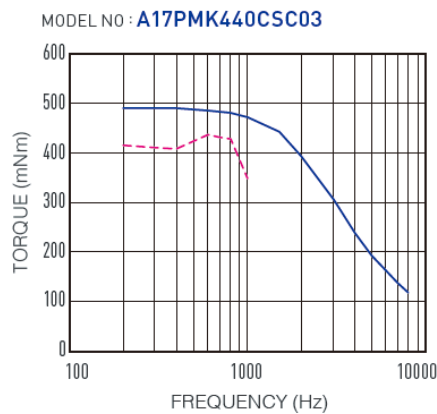
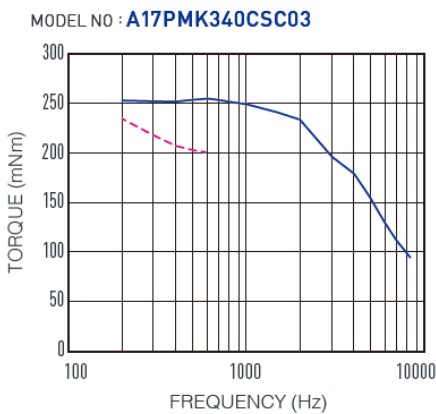
Model	Outer Diameter [mm]	Length [mm]	Step Angle [°]	Drive Sequence	Rated Current [A]	Resistance [ohms]
A17PMK340CSB03	42.0	46.0	1.800	BI-POLAR	2.00	0.90
A17PMK440CSB03	42.0	56.0	1.800	BI-POLAR	2.00	1.20
A17PMFA34CSB03	42.0	68.0	1.800	BI-POLAR	2.60	1.00

Model	Holding Torque [mN · m]	Inductance [mH]	Rotor Inertia [g · cm ²]	Detent Torque [mN · m]	Encoder Resolution [CPR]	Mass [g]
A17PMK340CSB03	290	2.0	50.0	11.3	4000	300
A17PMK440CSB03	510	2.6	75.0	16.7	4000	400
A17PMFA34CSB03	690	1.5	162.0	30.0	4000	560

Torque/Speed Characteristics

Driver : Chopper Dual
 Supply voltage : 24V (DC)

— P.out
 - - - P.in



Case Studies

We can customize to meet your various requests! [Stepping motors]