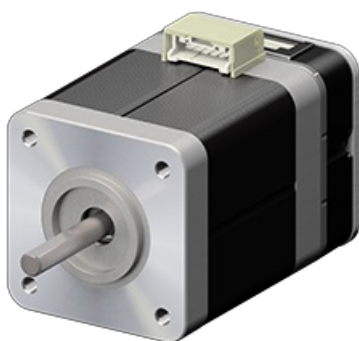


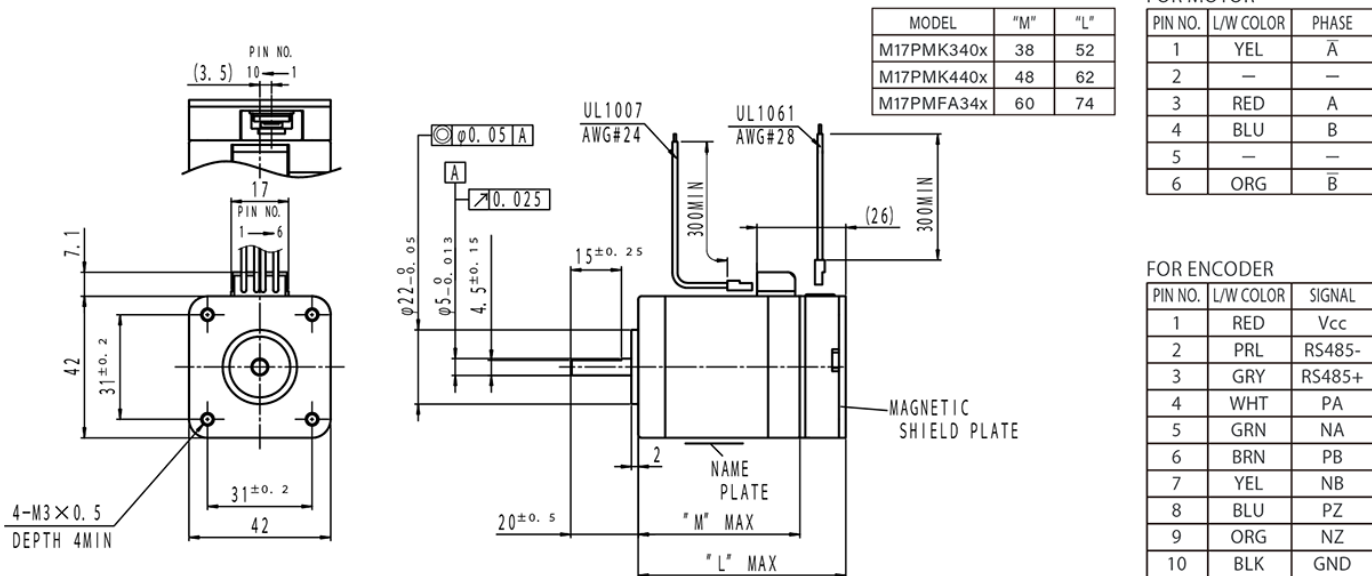
# M17PM(□42)

2024/02/28

## Appearance



## Overall View



## Wiring Diagram

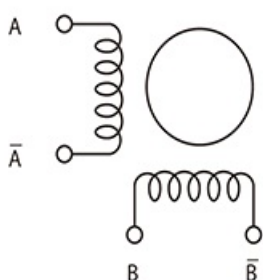
## M17PM(□42)

2024/02/28

PHASE	A	A COM	A/	B	B COM	B/
PIN NO.	3	-	1	4	-	6

## Wiring Diagram Image

## BI POLAR Wiring Connection Diagram



## Specifications

Model	Outer Diameter [mm]	Length [mm]	Step Angle [°]	Drive Sequence	Rated Current [A]	Resistance [ohms]
M17PMK340CMB03	42.0	52.0	1.800	BI-POLAR	2.00	0.90
M17PMK440CMB03	42.0	62.0	1.800	BI-POLAR	2.00	1.20
M17PMFA34CMB03	42.0	74.0	1.800	BI-POLAR	2.60	1.00

Model	Holding Torque [mN · m]	Inductance [mH]	Rotor Inertia [g · cm <sup>2</sup> ]	Detent Torque [mN · m]	Encoder Resolution [CPR]	Mass [g]	Maximum turn count
M17PMK340CMB03	290	2.0	50.0	11.0	4000	320	1000
M17PMK440CMB03	510	2.6	75.0	16.7	4000	420	1000
M17PMFA34CMB03	690	1.5	162.0	30.0	4000	580	1000

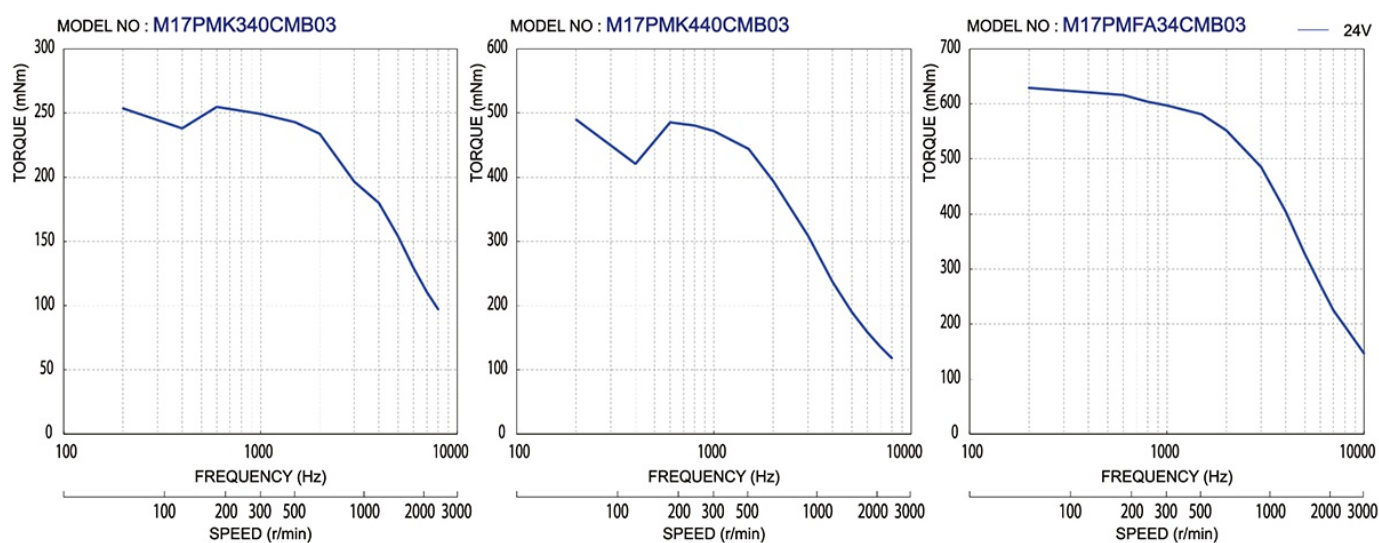
## Encoder Specifications

# M17PM(□42)

2024/02/28

Item	specifications
ENCODER TYPE	INCREMENTAL

## Torque/Speed Characteristics



## Case Studies

**We can customize to meet your various requests! [Stepping motors]**

## M17PM(□42)

2024/02/28