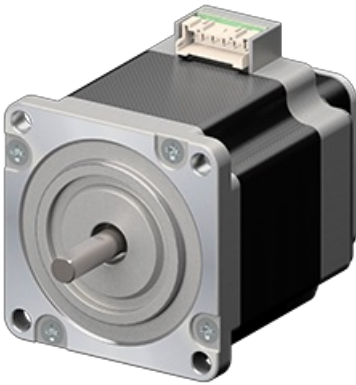


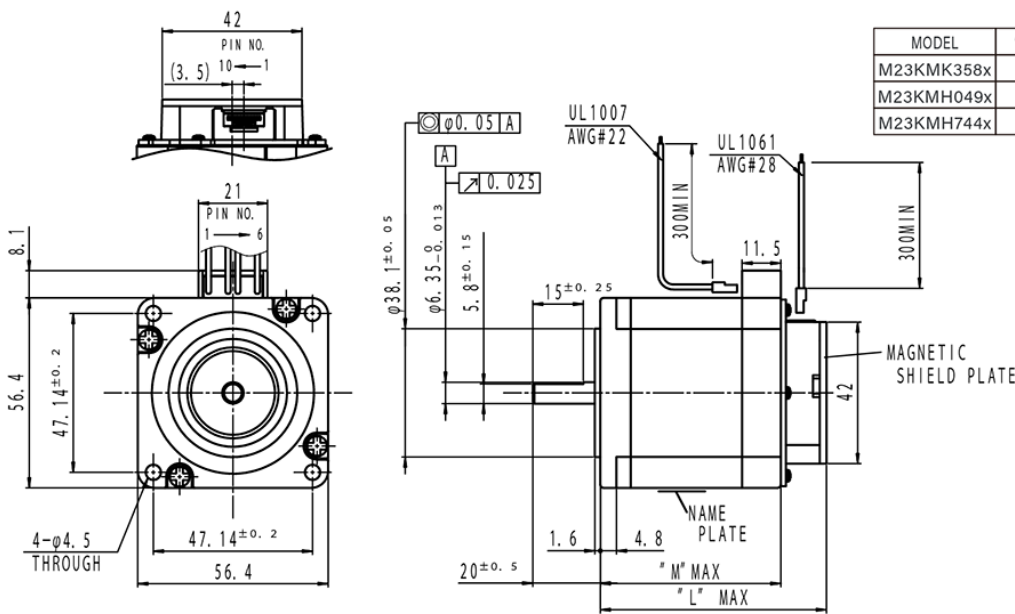
M23KM(□56)

2024/02/28

Appearance



Overall View



MODEL	"M"	"L"
M23KMK358x	50	64
M23KMH049x	55	69
M23KMH744x	77	91

FOR MOTOR

PIN NO.	L/W COLOR	PHASE
1	ORG	B̄
2	—	—
3	BLU	B
4	YEL	Ā
5	—	—
6	RED	A

FOR ENCODER

PIN NO.	L/W COLOR	SIGNAL
1	RED	Vcc
2	PRL	RS485-
3	GRY	RS485+
4	WHT	PA
5	GRN	NA
6	BRN	PB
7	YEL	NB
8	BLU	PZ
9	ORG	NZ
10	BLK	GND

Wiring Diagram

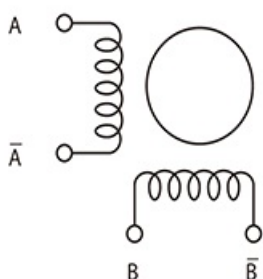
M23KM(□56)

2024/02/28

PHASE	A	A COM	A/	B	B COM	B/
PIN NO.	3	-	1	4	-	6

Wiring Diagram Image

BI POLAR Wiring Connection Diagram



Specifications

Model	Outer Diameter [mm]	Length [mm]	Step Angle [°]	Drive Sequence	Rated Current [A]	Resistance [ohms]
M23KMK358CMB03	56.4	64.0	1.800	BI-POLAR	1.70	1.90
M23KMH049CMB03	56.4	69.0	1.800	BI-POLAR	2.00	0.90
M23KMH744CMB03	56.4	91.0	1.800	BI-POLAR	3.00	0.70

Model	Holding Torque [mN · m]	Inductance [mH]	Rotor Inertia [g · cm ²]	Detent Torque [mN · m]	Encoder Resolution [CPR]	Mass [g]	Maximum turn count
M23KMK358CMB03	800	7.8	180.0	29.0	4000	660	1000
M23KMH049CMB03	1300	3.7	320.0	54.0	4000	750	1000
M23KMH744CMB03	1800	2.8	490.0	93.0	4000	1130	1000

Encoder Specifications

ミネベアミツミ株式会社

Copyright©MinebeaMitsumi Inc. All right reserved.

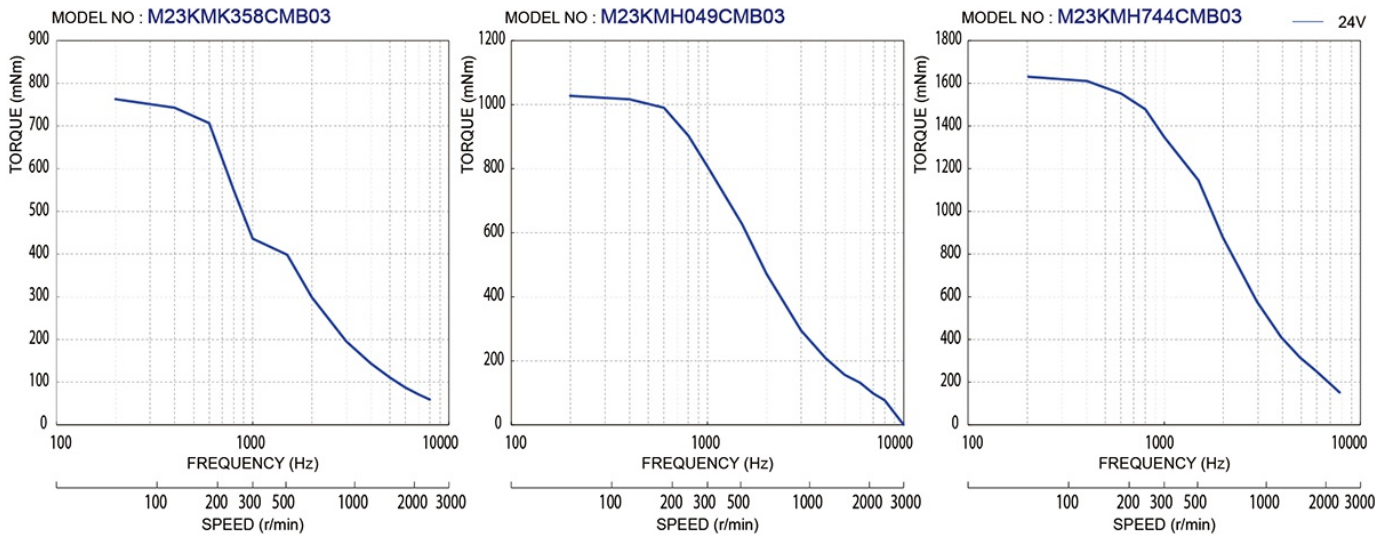
M23KM(□56)

2024/02/28

Encoder Specifications

Item	specifications
ENCODER TYPE	INCREMENTAL

Torque/Speed Characteristics



Case Studies

We can customize to meet your various requests! [Stepping motors]

M23KM(□56)

2024/02/28