

SMS6-F40

2024/02/28

Appearance



Reference Characteristics

Outer Diameter [mm]	6.0
Length [mm]	5.35
Step No.	40
Magnet Material	Nd-Fe-B bonded magnet (N51)
Insulation Resistance (M) [Ω/min]	1
Dielectric Strength (AC) [V/min]	100
Step Angle [deg]	9.00
Drive Method	2-2 phase
Class of Insulation	CLASS E
Operating Temp. lower limit [deg.C]	-10
Operating Temp. upper limit [deg.C]	50
Storage Temp. lower limit	-25

SMS6-F40

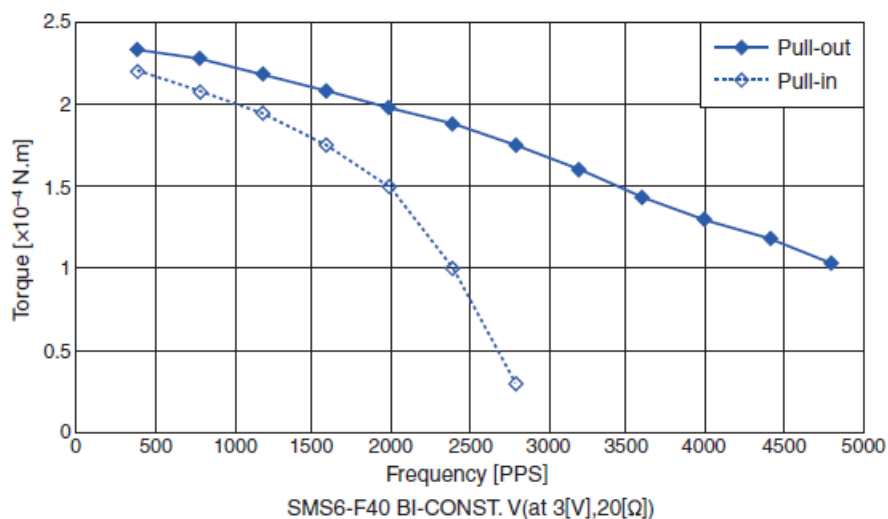
2024/02/28

[deg.C]	
Storage Temp. upper limit [deg.C]	60
Operating Hum. RH lower limit [%]	5
Operating Hum. RH upper limit [%]	85

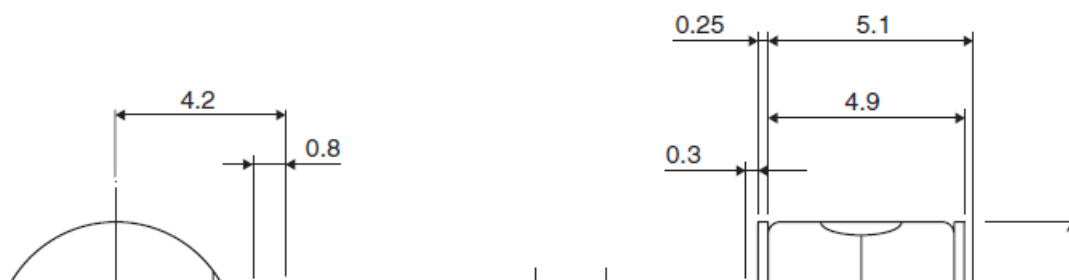
*Bipolar only. Unipolar is not available.

*No dew condensation.

Torque Characteristic

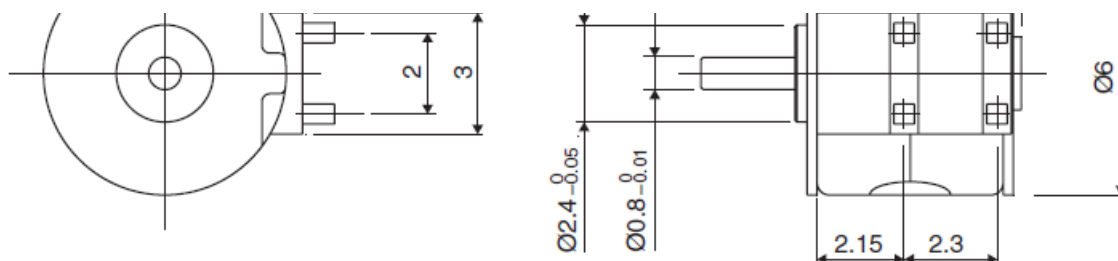


Overall View



SMS6-F40

2024/02/28



Specifications

Drive Circuit	Drive Voltage [V]	Coil Resistance/Phase [Ω]	Drive IC
BIPOLAR CONST. VOLT.	3	20.0	LB1836M

Applications

Optical instrument: Digital cameras / Blu-ray Aberration correction

Telecommunication Equipment: Smart phone / Tablet

Case Studies

We can customize to meet your various requests! [Stepping motors]

SMS6-F40

2024/02/28