

## SMSSH7-F20

2024/02/28

## Appearance



## Reference Characteristics

Outer Diameter [mm]	7.0
Length [mm]	4.30
Step No.	20
Magnet Material	Nd-Fe-B bonded magnet (N51)
Insulation Resistance (M) [Ω/min]	1
Dielectric Strength (AC) [V/min]	100
Step Angle [deg]	18.00
Drive Method	2-2 phase
Class of Insulation	CLASS E
Operating Temp. lower limit [deg.C]	-10
Operating Temp. upper limit [deg.C]	50
Storage Temp.	

# SMSSH7-F20

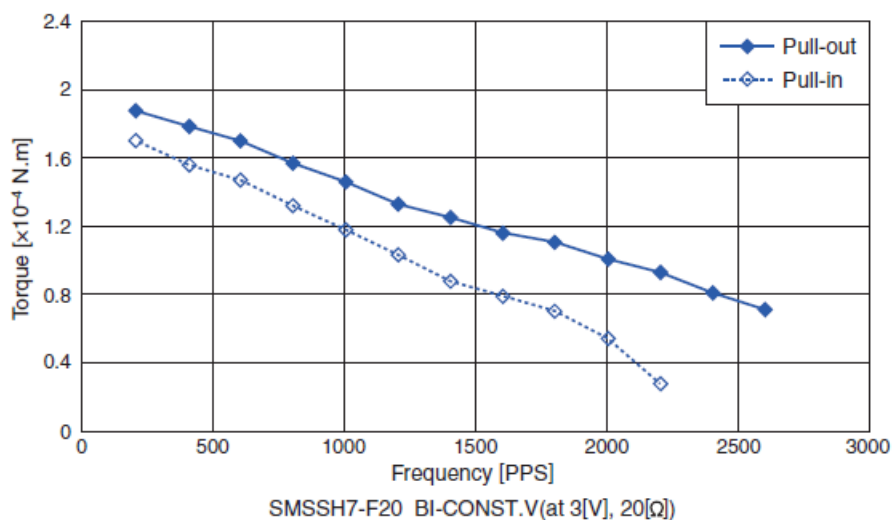
2024/02/28

lower limit [deg.C]	-25
Storage Temp. upper limit [deg.C]	60
Operating Hum. RH lower limit [%]	5
Operating Hum. RH upper limit [%]	85

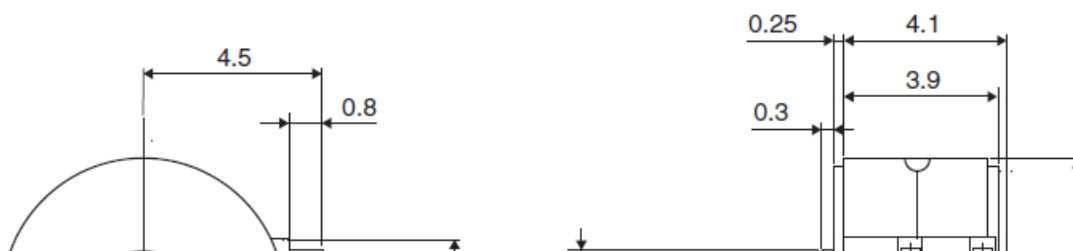
\*Bipolar only. Unipolar is not available.

\*No dew condensation.

## Torque Characteristic

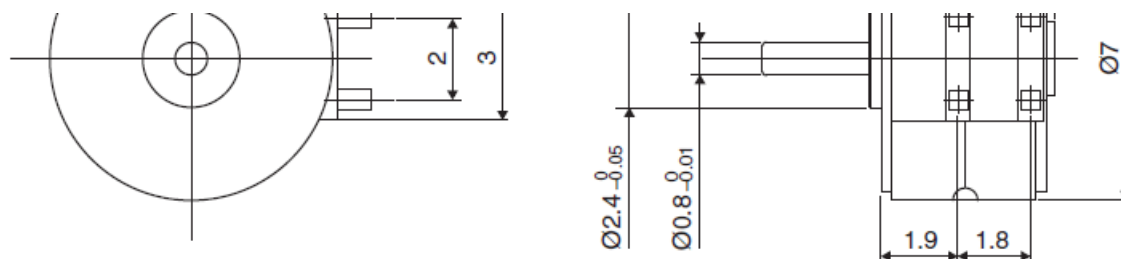


## Overall View



**SMSH7-F20**

2024/02/28

**Specifications**

Drive Circuit	Drive Voltage [V]	Coil Resistance/Phase [ $\Omega$ ]	Drive IC
BIPOLAR CONST. VOLT.	5	20.0	LB1836M

**Applications**

Optical instrument: Digital cameras / Blu-ray Aberration correction

Telecommunication Equipment: Cellular phone

**Case Studies****We can customize to meet your various requests! [Stepping motors]**

## SMSSH7-F20

2024/02/28