

## Digital Temperature Sensor IC

# MM3286



### Outline

This IC is an I2CBUS compatible digital temperature sensor IC that incorporates a temperature sensor and a sigma-delta AD converter. It offers low current consumption and an I2C BUS compatible interface, making it ideal for a wide range of applications. It also has a built-in thermostat function to improve safety.

### Applications

Flat TVs                      System temperature monitoring  
 Tablet PCs, PCs          Office automation equipments  
 PC servers / network servers

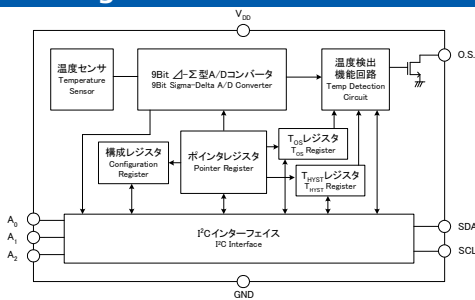
### Features

- ① Low voltage operation: 3.0V to 5.5V
- ② Low current consumption: 75μA typ.
- ③ Fast update of time: 2ms typ.
- ④ Accuracy: ±2.0°C ( 25°C to +100°C)
- ⑤ Resolution: 9 bits (0.5°C)
- ⑥ Shutdown mode minimizing current consumption
- ⑦ I<sup>2</sup>C BUS compatible interface
- ⑧ Up to 8 ICs can be built into a bus
- ⑨ Built-in thermostat function (comparator mode, latch mode)

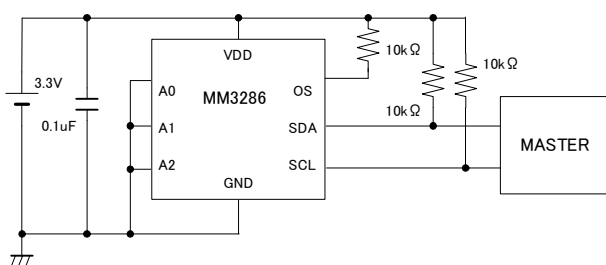
### Specification

Item	Specification	Unit
Operation temperature	-40 ~ +125	°C
Operating voltage	3.0 ~ 5.5	V
Supply current	75 (typ.)	μA
Temperature accuracy	±2.0 (-25~+100°C)	°C
Resolution	9 (0.5°C)	bit
Data update time	2	ms
Start-up Reset Voltage	2.1	V
O.S. Output Saturation	0.4	Vmax

### Block Diagram



### Application circuit



### Package

SOP-8D

