

MMR920

2023/03/22

Outline

The MMR920 series is a Gauge pressure sensor module that includes a MEMS pressure die with a dedicated analog front end IC to provide a fully calibrated and temperature compensated digital output (I2C/SPI). Its unique packaging structure provides protection from aggressive media since electronics are not exposed to the high pressure port. The MMR920 series is ideal for low pressure application requiring high accuracy and robustness.

Applications

Devices using air pressure

Features

- ① Small package 7.0(W) × 7.0(D) × 7.2(H)mm
- ② A high-accuracy pressure value can be output
Pressure accuracy : ±0.5%FS
- ③ It corrects the differences of sensors and temperature characteristics when shipped from our factory
- ④ It digitally outputs pressure value (SPI,I2C)

Main specifications

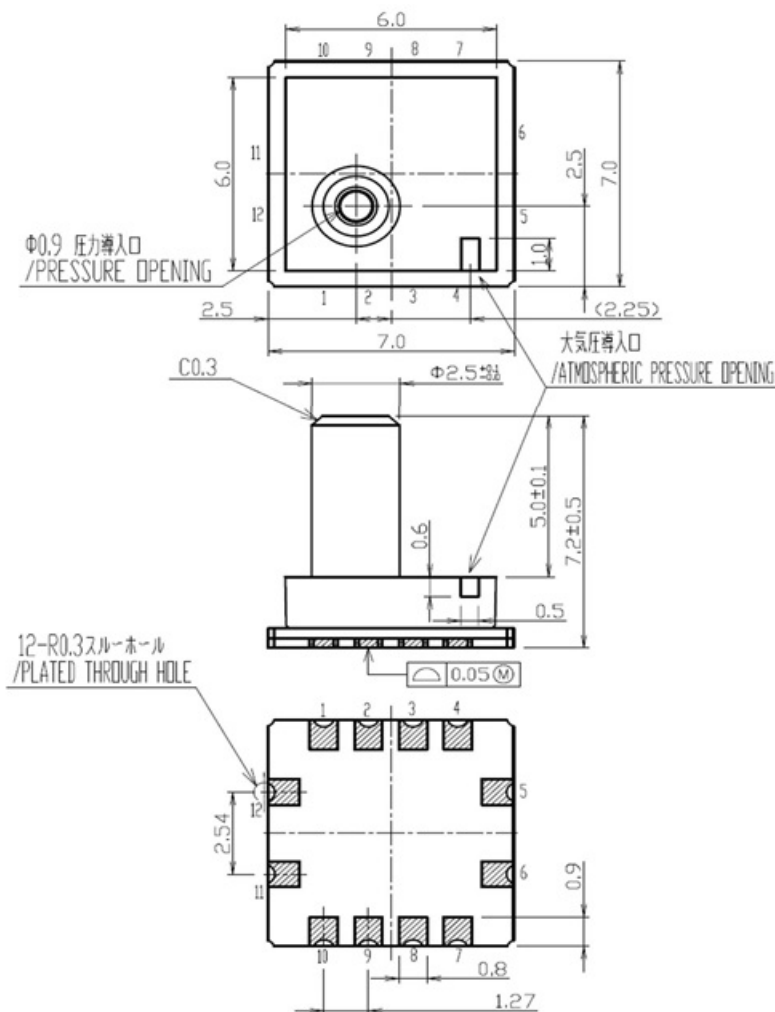
Pressure Type	Gage Pressure
Pressure Medium	Air (no Condensation)
Supply Voltage Range [V]	3.0~3.6
Operating Temperature Range	0~50

MMR920

2023/03/22

[deg.C]	
Operating Pressure Range [kPa]	$\pm 2 / \pm 4 / \pm 7 / \pm 10$
Current Consumption [μA]	800
Pressure accuracy [Pa]	$\pm 20 / \pm 40 / \pm 70 / \pm 100$
Pressure effective resolution [PaRMS]	1.8 / 0.9 / 0.4 / 0.2
Conversion Time [ms]	0.4 / 0.8 / 1.6 / 3.2
Interface	SPI/I2C

Package



MMR920

2023/03/22

Package Size [mm]

7.0 x 7.0 x 7.2