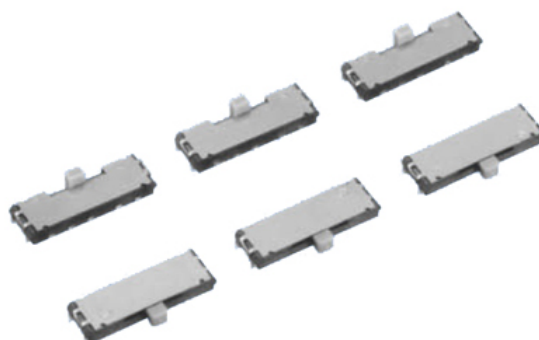


## SSA Series

2024/02/28

## Features



1. 1-pole, 3-contacts self return slide switch.
2. Suitable for SMT reflow soldering.
3. Providing 6 kinds of operations and tactile feelings by unique combination of slider and cover.
4. Vertical/horizontal operation knobs are available.

## Application

1. For portable audios, remote controllers, DSC, video players, mobile phones, PDAs, etc.
2. For power switches, hold switches, mode select switches.
3. For zoom function in cameras.

## Specifications

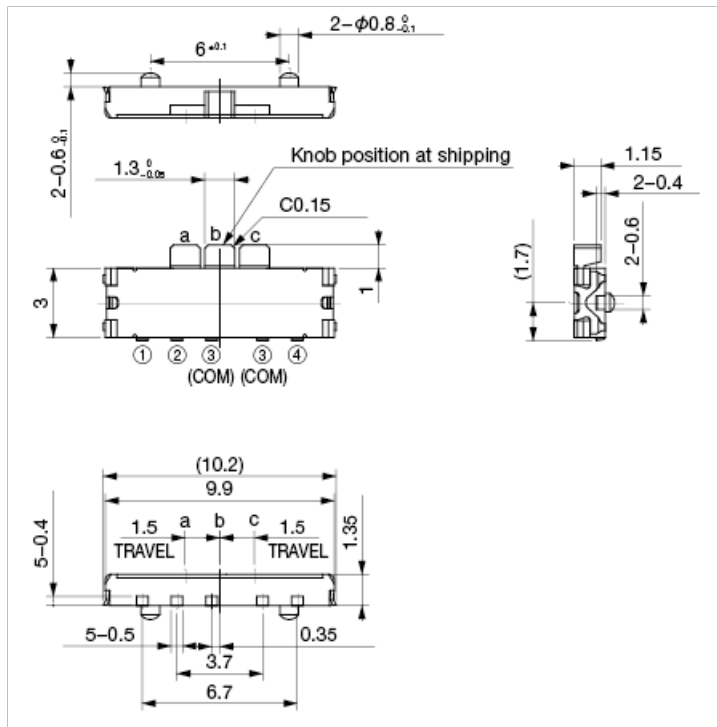
Rating (Resistive load)	0.3A, 4V DC
Contact Resistance	1Ω or less
Insulation resistance	10MΩ or more
Withstand Voltage	1 minute at 100V AC

# SSA Series

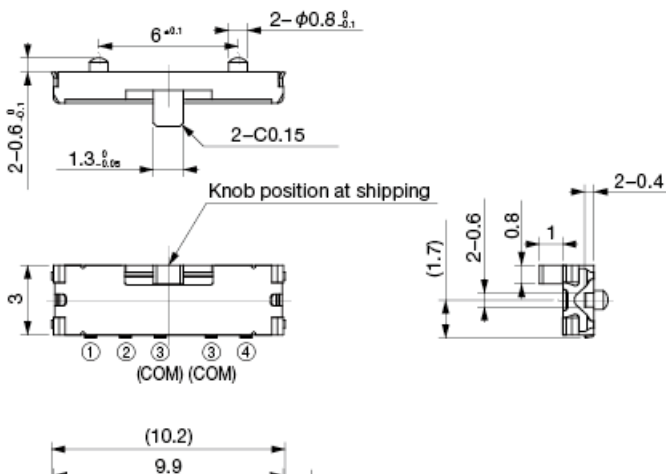
2024/02/28

Operating Force	Self return section: $1.2 \pm 1.0\text{N}$ Click section: $1.5 \pm 1.0\text{N}$
Life	50,000cycles
Pcs/Reel	Horizontal : 5,000pcs Vertical : 4,000pcs

## Overall View

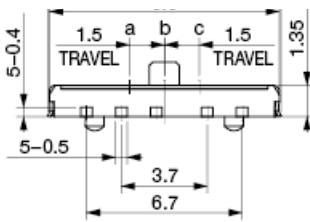


Horizontal

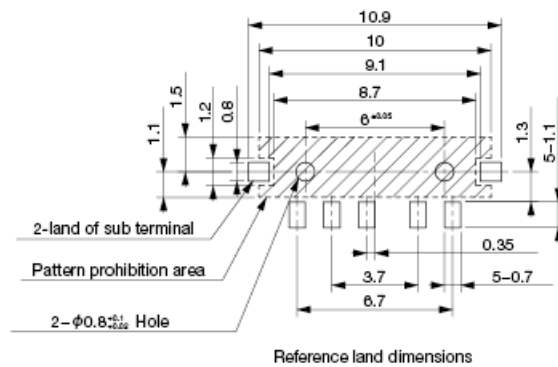
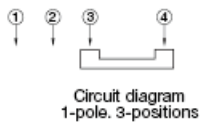


# SSA Series

2024/02/28



Vertical



Unit:mm

## NOTE

\*Any products mentioned in this catalog are subject to any modification in their appearance and others for improvements without prior notification.

\*The details listed here are not a guarantee of the individual products at the time of ordering. When using the products, you will be asked to check their specifications.