

Specifications

2.4 inch Back Light for Cellular phone

LED : Nichia kagaku NESW008B 4 LEDs

Prism sheet : T-Bef, Bef II

Test Conditions

Forward current : If=15mA (each LED)

Measurement point : Center of each position where effective area was divided into nine

Measurement direction : Front (0°)

Environment : Windless in a darkroom, Temperature 25°C, Humidity 42%

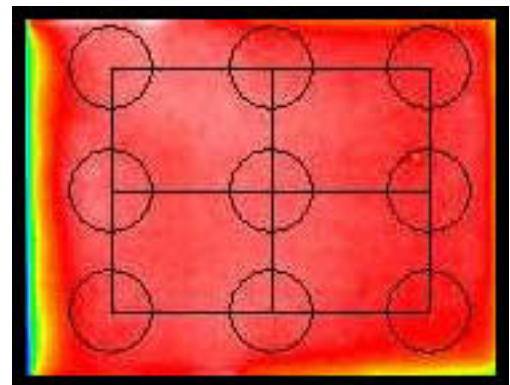
Characteristics

Center luminance : 3,769cd/m² (typical)

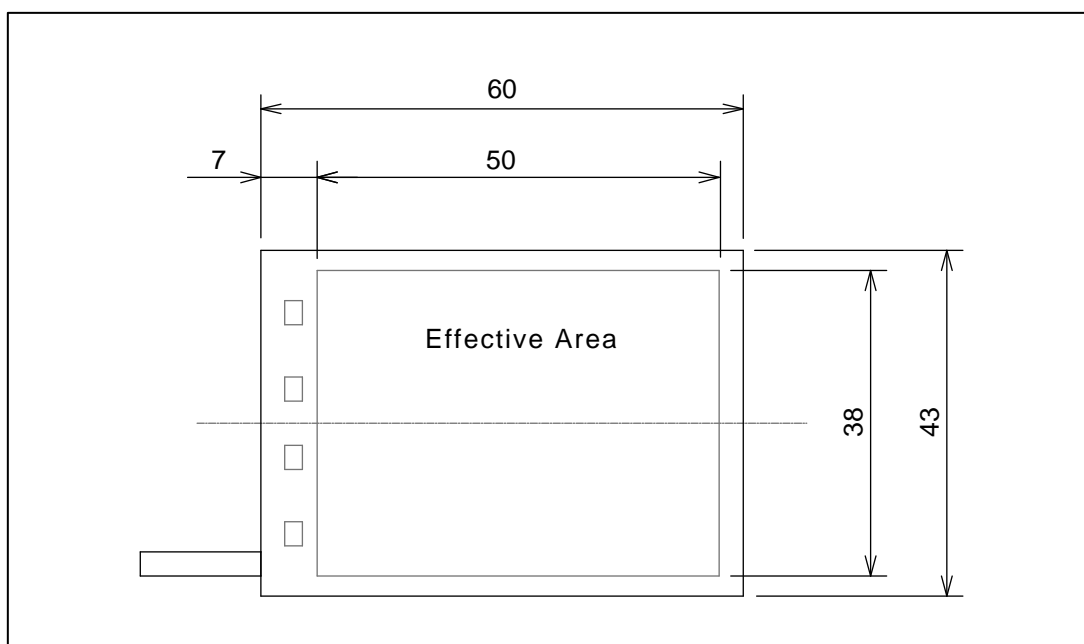
9 point AVG luminance : 3,605cd/m² (typical)

Uniformity : 87% (typical)

LED		3,356	3,831	3,738
LED		3,341	3,769	3,795
LED		3,407	3,553	3,646
LED				



Dimensions



The figures provided above is for your reference only.
Therefore, we does not warrant or guarantee the accuracy or timeliness of any information available here in. Design and specifications is subject to change without notice.