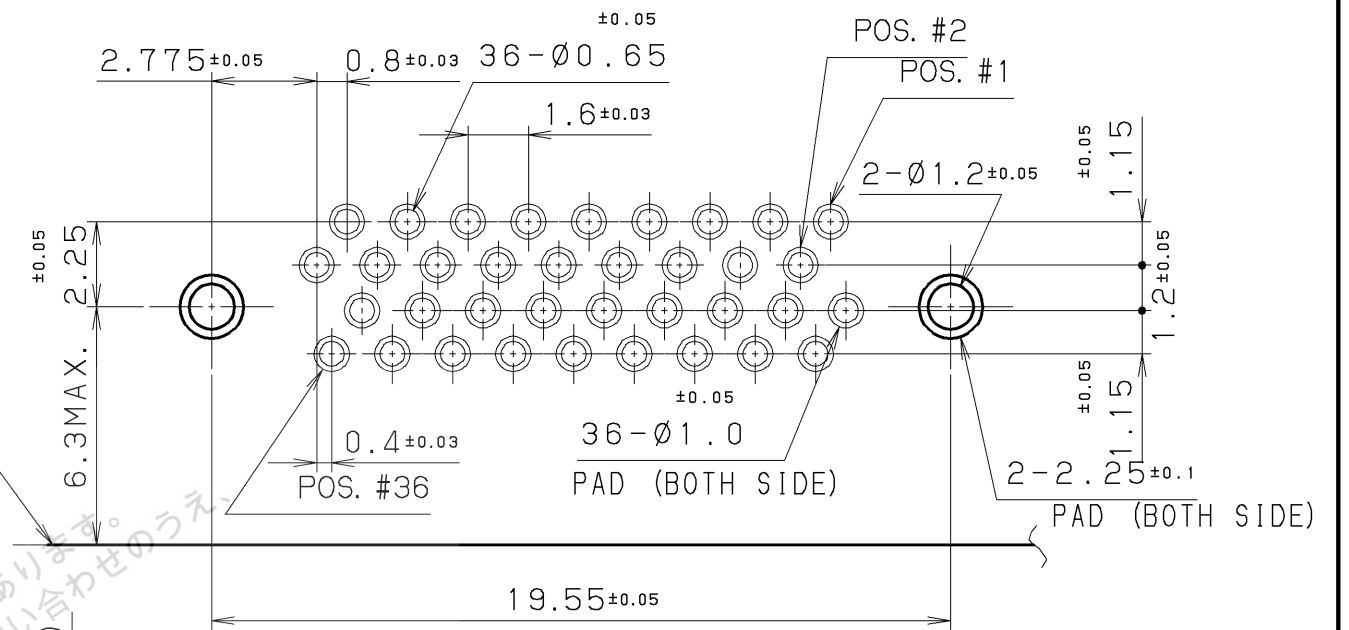


RECOMMENDED
PANEL CUT-OUT DIMENSIONS
(t=1.12±0.08)

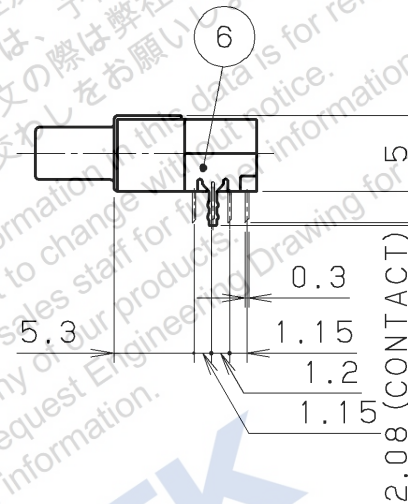
NOTE 1. CONTACT PLATING
CONTACT AREA: GOLD 0.1 μm MIN. OVER PALLADIUM/NICKEL 0.5 μm
TERMINAL AREA: GOLD 0.05 μm
ALL OVER NICKEL UNDERPLATED.

2. CONTACTS ARE INSERT MOLDED.

EDGE OF
P. C. BOARD

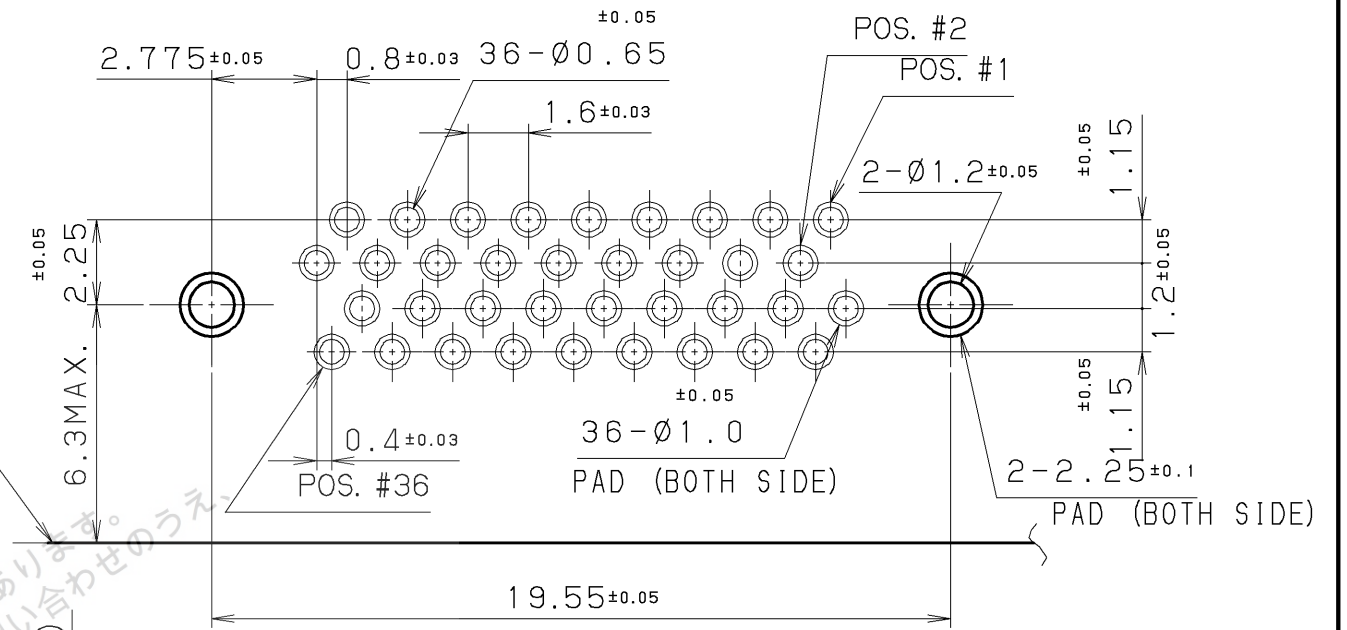
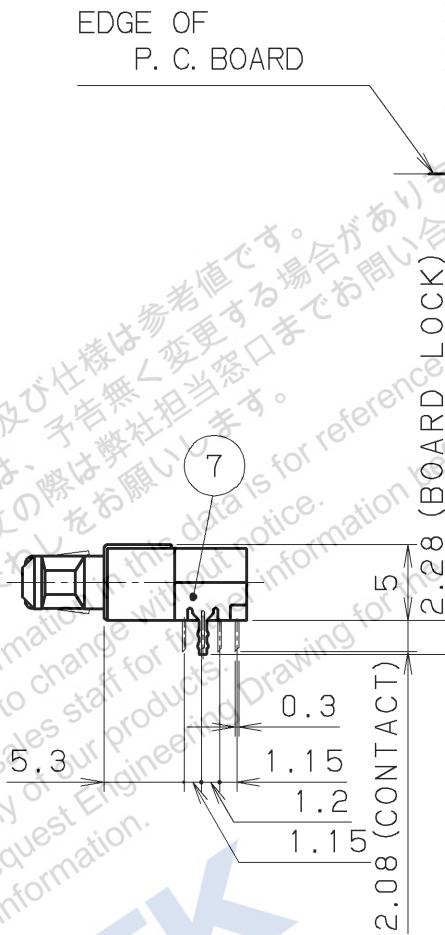
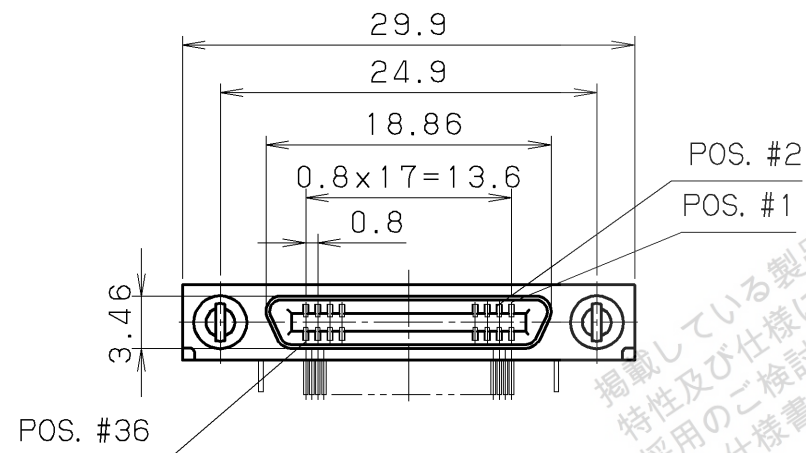
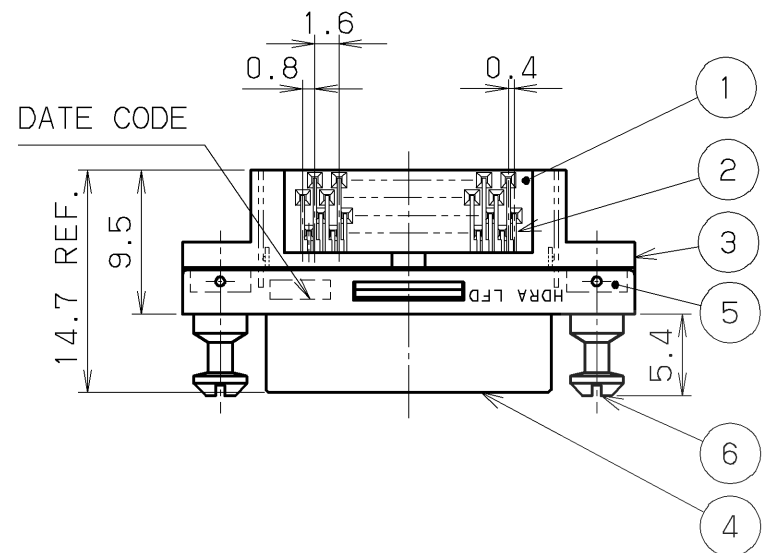


RECOMMENDED P. C. B. LAYOUT
(MOUNT SIDE VIEW)
(SCALE=5/1)



6	BOARD LOCK	PHOSPHOR BRONZE	2	NICKEL	
5	SQR. NUT	BRASS	2	NICKEL	M2x0.4
4	SHELL	STEEL	1	NICKEL	
3	INSULATOR	LCP	1		UL94V-0 BLACK
2	CONTACT	PHOSPHOR BRONZE	36	SEE NOTE 1	
1	BRACKET	PPS	1		UL94V-0 BLACK

LTR.	DATE	BY	REV.	DESCRIPT	No.	PART NAME	MATERIAL	QTY	FINISH	NOTE
	AUG.03.1999	Y. KATO	2 / 1							
DATE						SCALE	UNIT	3RD. A. P		
APP. DATE & REV.						HONDA TSUSHIN KOGYO CO., LTD.				
DR.	DE.	CHK.	CHK.	APP.	NAME		0.8mm SPACING 36POS. R/A FEMALE CONNECTOR			
Y. KATO	Y. KATO	—	C. NUNOKAWA	H. EBIHARA	PART NO.	HDRA-EA36LFD+			REV.	



RECOMMENDED P. C. B. LAYOUT
(MOUNT SIDE VIEW)
(SCALE=5/1)

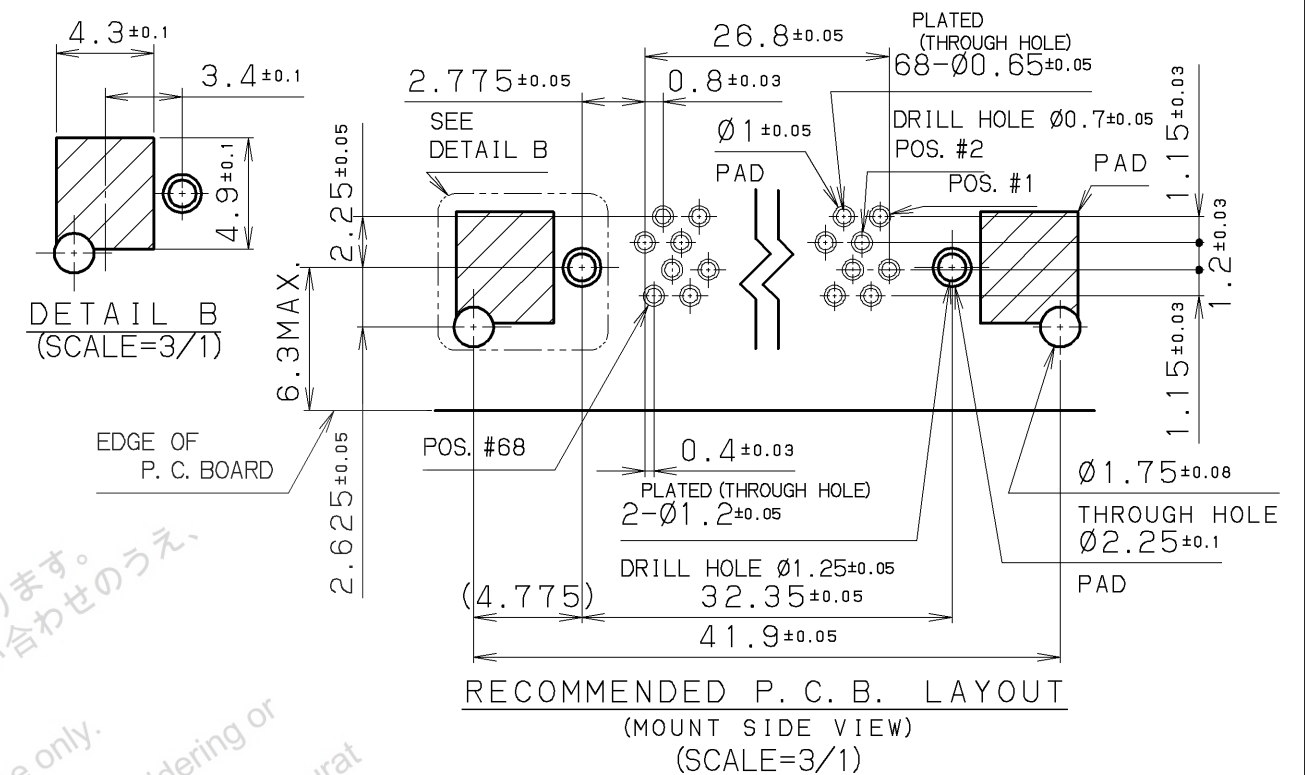
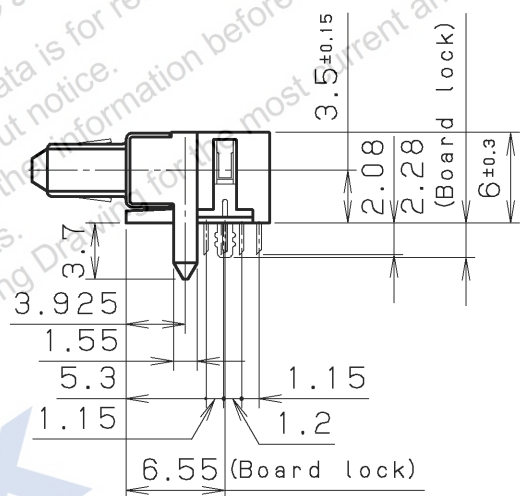
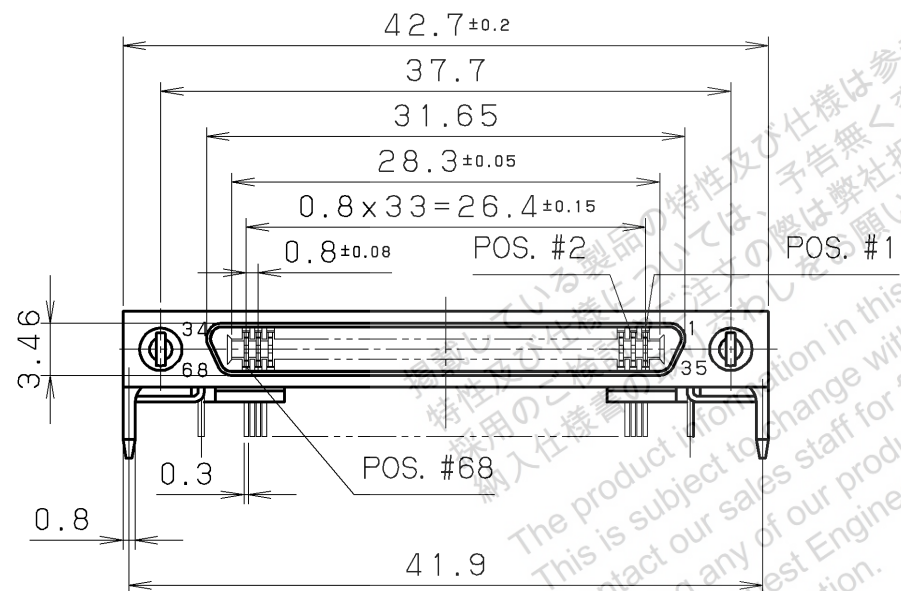
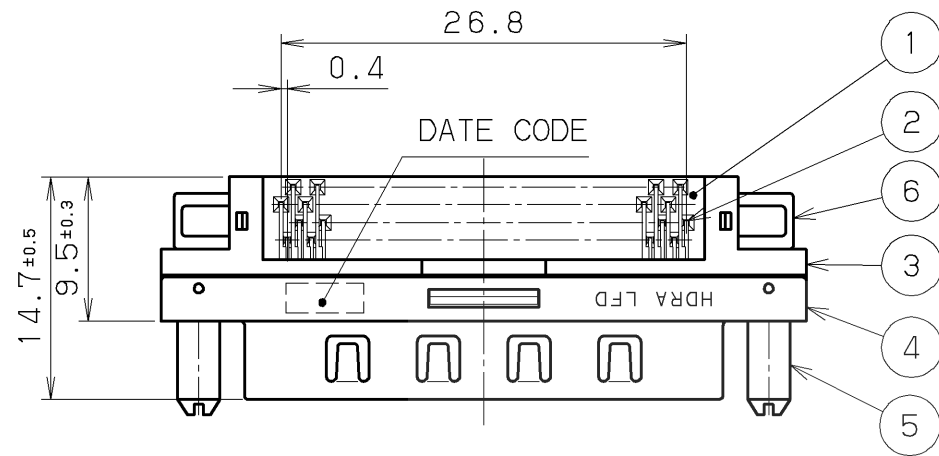
掲載している製品の特性及び仕様は参考値です。特性及び仕様については、予告無く変更する場合があります。採用のご検討やご注文の際は弊社担当窓口までお問い合わせをお願いします。納入仕様書の取り交しをお願いします。
The product information in this data is for reference only. This is subject to change without notice. Contact our sales staff for more information before considering or ordering any of our products. Please request Engineering Drawing for the most current and accurate design information.

HTTK

NOTE 1. CONTACT PLATING
CONTACT AREA: GOLD 0.1 μm MIN. OVER PALLADIUM/NICKEL 0.5 μm
TERMINAL AREA: GOLD 0.05 μm
ALL OVER NICKEL UNDERPLATED.
2. CONTACTS ARE INSERT MOLDED.

7	BOARD LOCK	PHOSPHOR BRONZE	2	NICKEL	
6	LOCK SCREW	STEEL	2	NICKEL	
5	SQR. NUT	BRASS	2	NICKEL	M2x0.4
4	SHELL	STEEL	1	NICKEL	
3	INSULATOR	LCP	1		UL94V-0 BLACK
2	CONTACT	PHOSPHOR BRONZE	36	SEE NOTE 1	
1	BRACKET	PPS	1		UL94V-0 BLACK

LTR.	DATE	BY	REV.	DESCRIPT	No.	PART NAME	MATERIAL	QTY	FINISH	NOTE	
	DATE			SCALE		UNIT					
	Dec. 26, 2006			2 / 1		mm (INCH)					
	APP. DATE & REV.					3RD. A. P	HONDA TSUSHIN KOGYO CO., LTD.				
	DR.	DE.	CHK.	CHK.	APP.	NAME	0.8mm SPACING 36POS. R/A FEMALE CONNECTOR				
	Y. KATO	Y. KATO			H. EBIHARA	PART NO.	HDRA-EA36LFDT-SLE+ REV.				



HTK

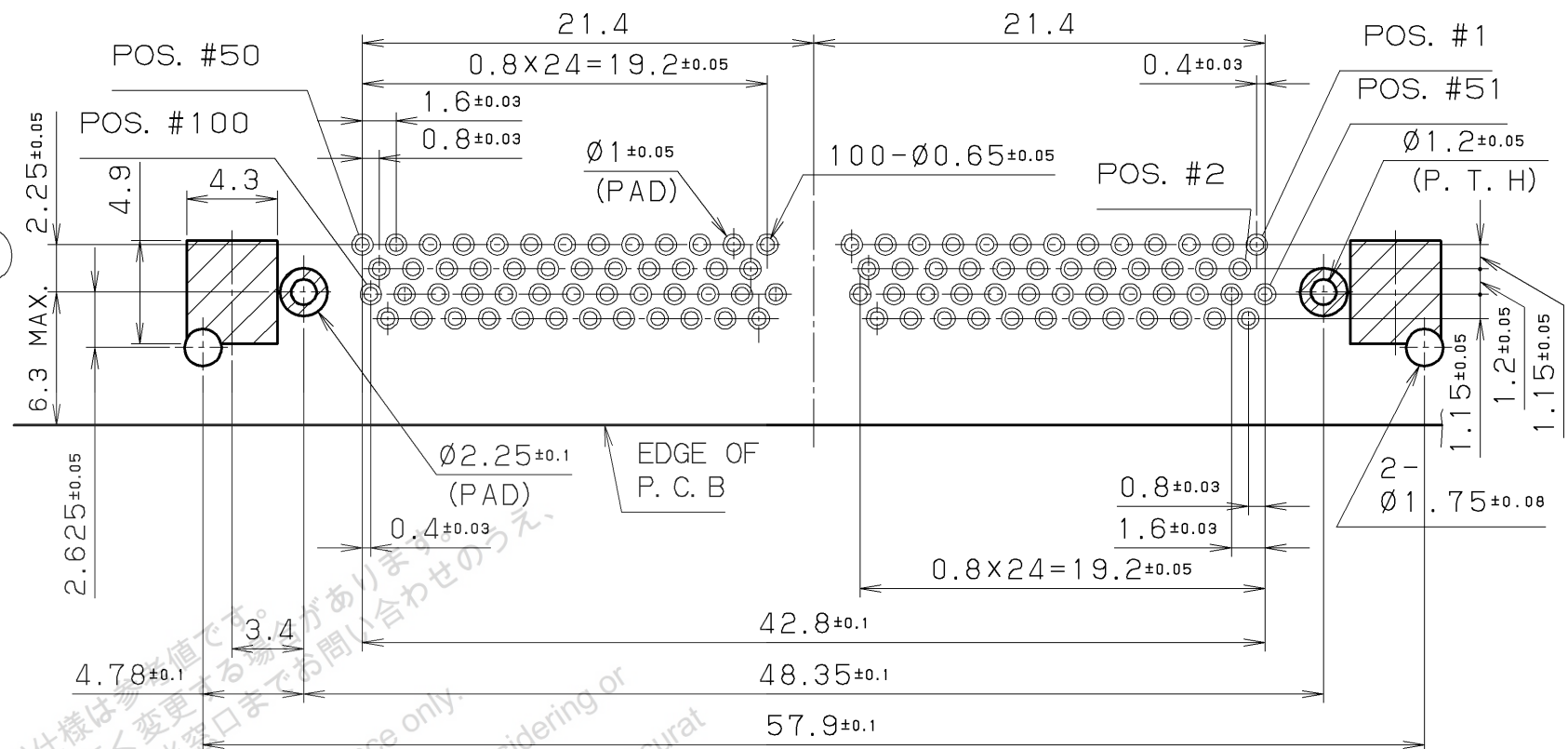
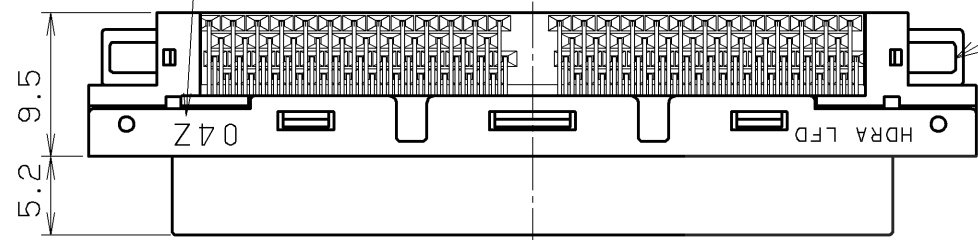
The product information in this data is for reference only.
This is subject to change without notice.
Contact our sales staff for further information before considering or ordering any of our products.
Please request Engineering Drawings for most current and accurate design information.

6	HOLD DOWN	PHOSPHOR BRONZE	2	NICKEL PLATING	M2 X 0.4
5	GUIDE PIN	STEEL	2	NICKEL PLATING	—
4	SHELL	STEEL	1	NICKEL PLATING	—
3	INSULATOR	PA9T	1	—	UL94V-0 BLACK
2	CONTACT	PHOSPHOR BRONZE	68	SEE NOTE 1	—
1	BRACKET	PPS	1	—	UL94V-0 BLACK

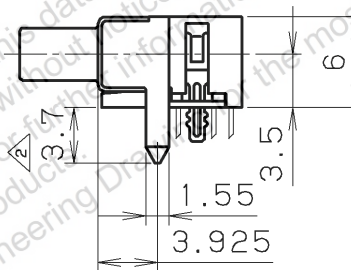
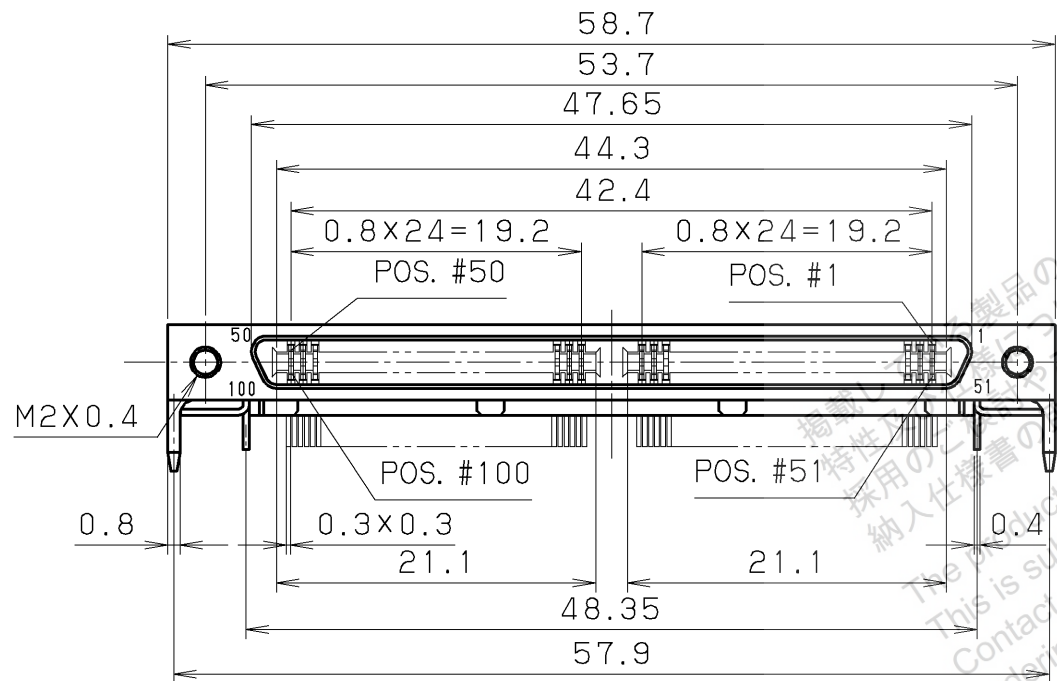
NOTE 1. CONTACT PLATING
 CONTACT AREA: GOLD 0.1 μm MIN. OVER PALLADIUM/NICKEL 0.5 μm
 TERMINAL AREA: GOLD 0.05 μm
 ALL OVER NICKEL UNDERPLATED.

LTR.	DATE	BY	REV.	DESCRIPT	No.	PART NAME	MATERIAL	QTY	FINISH	NOTE
	DATE									
	Apr. 16.2007									
	SCALE									
	2 / 1									
	UNIT									
	mm (INCH)									
	3RD. A. P									
	HONDA TSUSHIN KOGYO CO., LTD.									
	APP. DATE & REV.									
	DR.	DE.	CHK.	CHK.	APP.	NAME	0.8mm SPACING 68POS. R/A FEMALE CONNECTOR (ONE MOLD TYPE)			
	Y. KATO	Y. KATO	—	C. NUNOKAWA	H. EBIHARA	PART NO.	HDBA-EC68LFDT-GP+			REV.

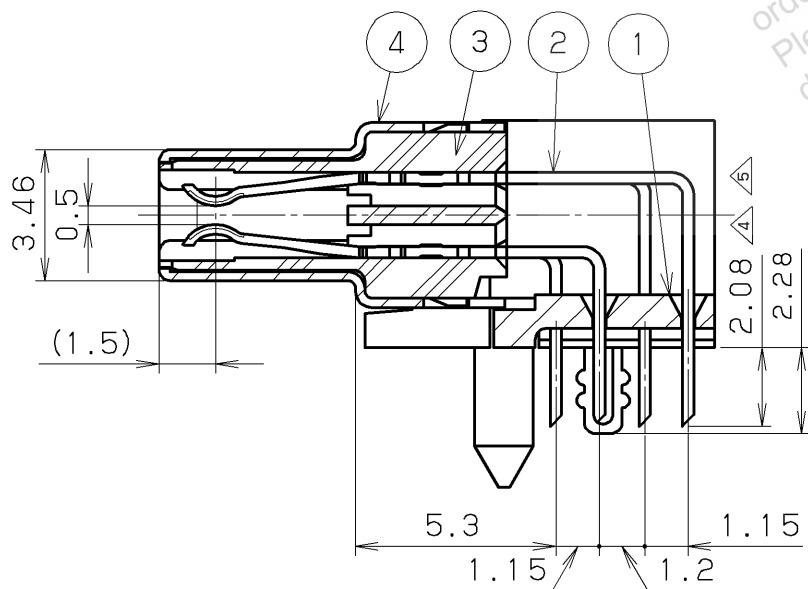
04Z
 YEAR (2004)
 MONTH
 (1, 2, 3...9, X, Y, Z)



RECOMMENDED P. C. B. LAYOUT (t=1.6)
 (MOUNT SIDE VIEW)
 (SCALE=3/1)



NOTE 1. CONTACT PLATING
 CONTACT AREA: GOLD 0.76 μm MIN.
 TERMINAL AREA: GOLD 0.05 μm
 ALL OVER NICKEL UNDERPLATED.



CONTACT DETALE (5/1)

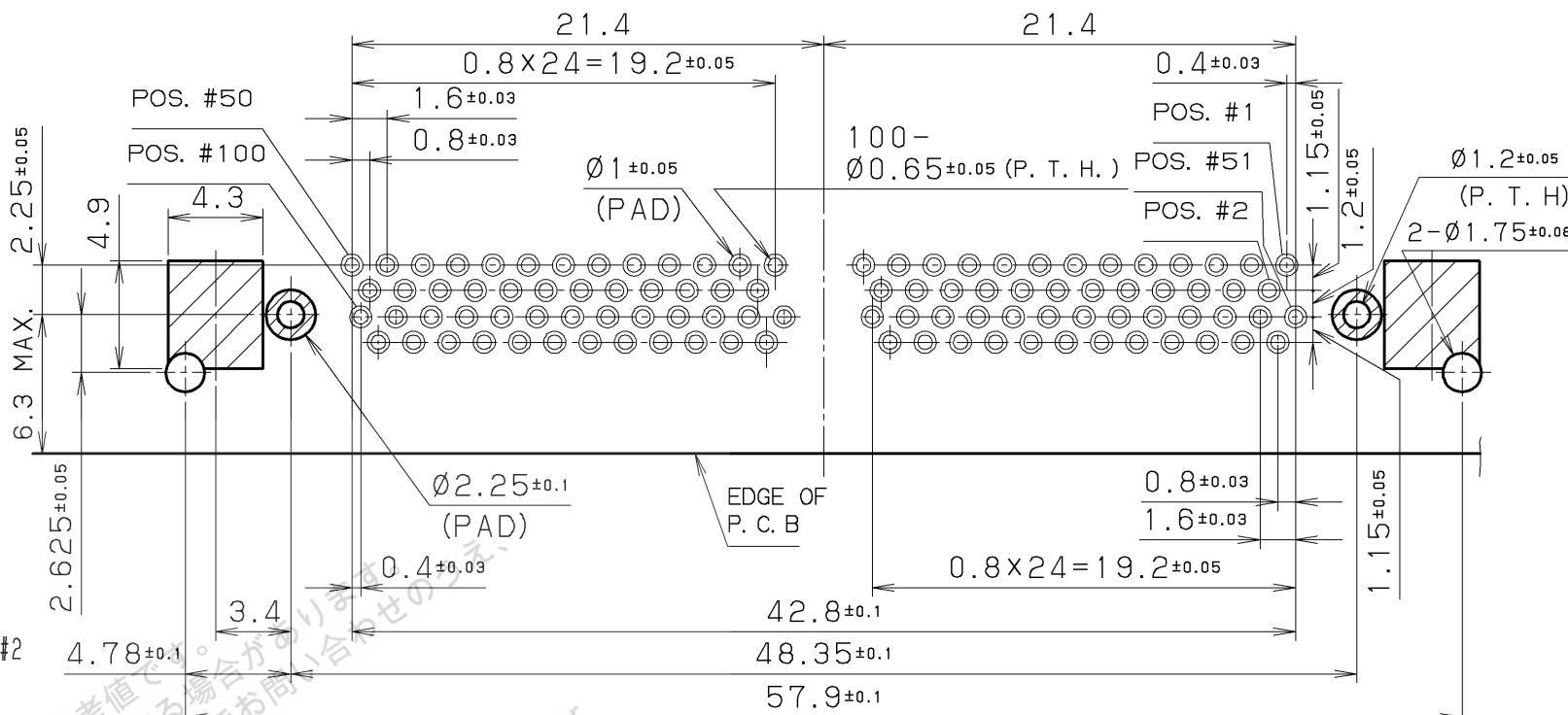
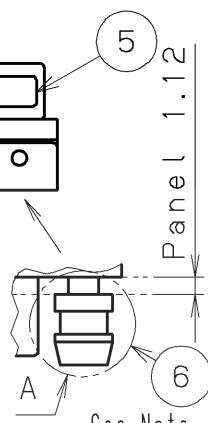
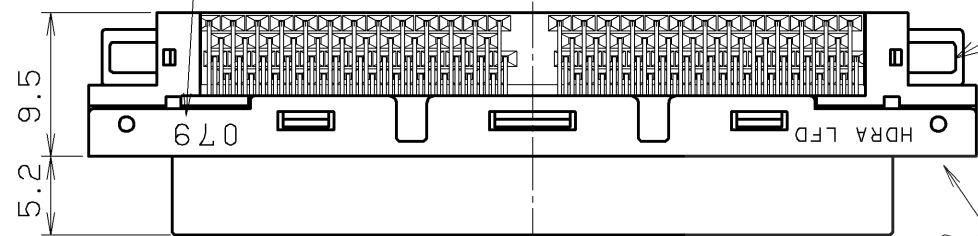
5	Nov.24 2005	Y. K	DIM.	5	HOLD DOWN	PHOSPHOR BRONZE	2	NICKEL PLATING	
4	Apr.06 2005	M. M	DIM.	4	SHELL	STEEL	1	NICKEL PLATING	
3	Dec.13 2004	Y. K	DATE CODE	3	INSULATOR	PA9T	1		UL94V-0 BLACK
2	Oct.14 2004	Y. K	REVISE (DIM.)	2	CONTACT	PHOSPHOR BRONZE	100	SEE NOTE 1	
1	Oct.1 2004	Y. K	PCB	1	BRACKET	PPS	1		UL94V-0 BLACK

LTR.	DATE	BY	REV.	DESCRIPT	No.	PART NAME	MATERIAL	QTY	FINISH	NOTE
------	------	----	------	----------	-----	-----------	----------	-----	--------	------

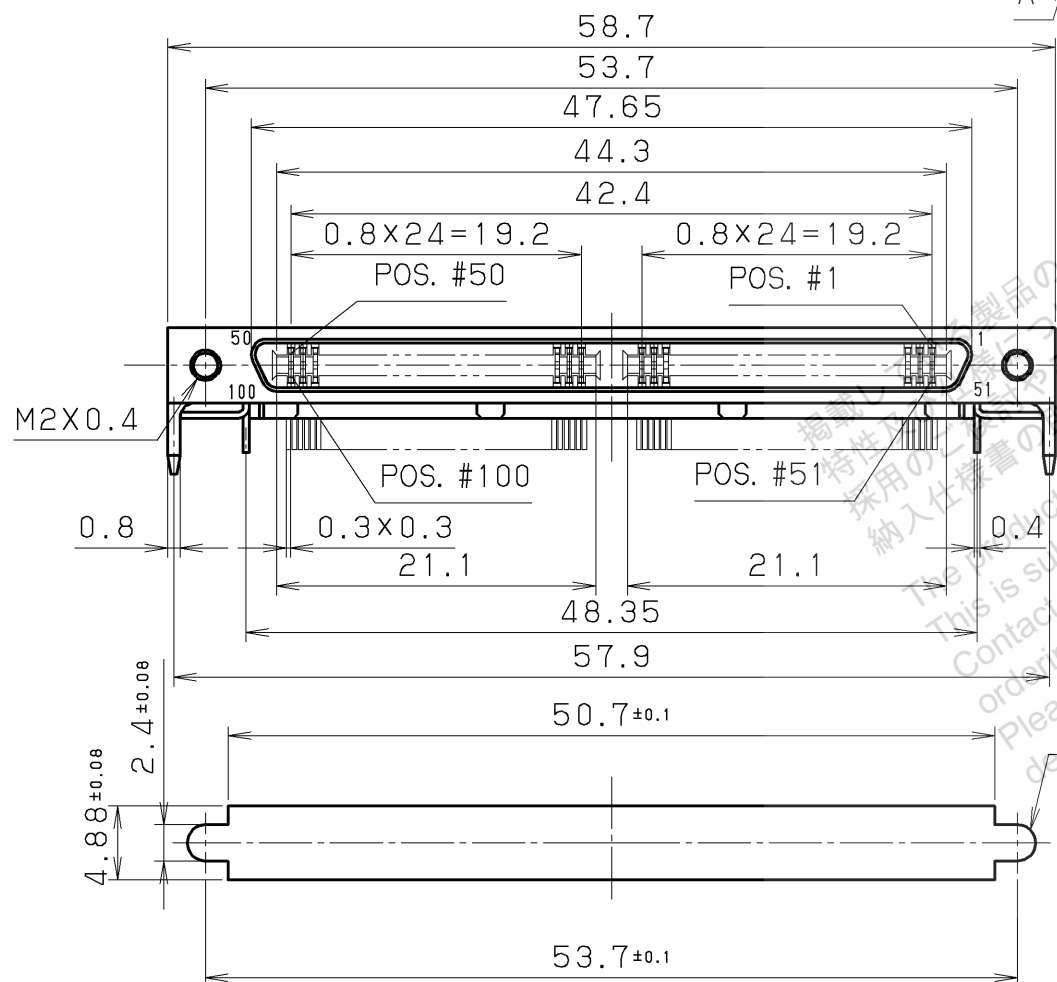
DATE Sep.7.2004		SCALE 2 / 1		UNIT mm (INCH)		3RD. A. P		HONDA TSUSHIN KOGYO CO., LTD.			
APP. DATE&REV.		DR.		DE.		CHK.		CHK.		APP.	
Y. KATO		Y. KATO		—		C. NUNOKAWA		H. EBIHARA		NAME	
PART NO.		HDRA-EC100LFDT+		REV.		5E		0.8mm SPACING 100 POS. R/A FEMALE CONNECTOR			

079
YEAR (2007)
MONTH
(1, 2, 3...9, X, Y, Z)

DATE CODE
INDICATION

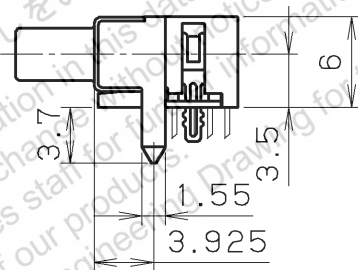


RECOMMENDED P. C. B. LAYOUT (t=1.6) (MOUNT SIDE VIEW) PAD

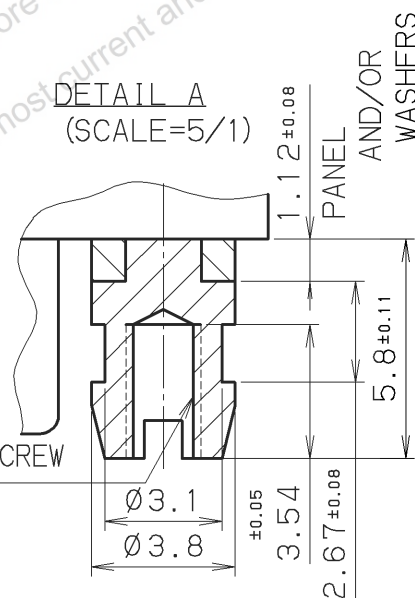


RECOMMENDED
PANEL CUT-OUT DIMENSIONS
(t=1.12±0.08)

NOTE #1. CONTACT PLATING
CONTACT AREA: Pd/Ni0.5µm+GOLD0.1µmMIN.
TERMINAL AREA: GOLD 0.05µm
ALL OVER NICKEL PLATED.
#2. TWO LOCK SCREWS (ITEM#6) ARE
SUPPLIED WITH A CONNECTOR.



FEMALE SCREW
M2x0.4

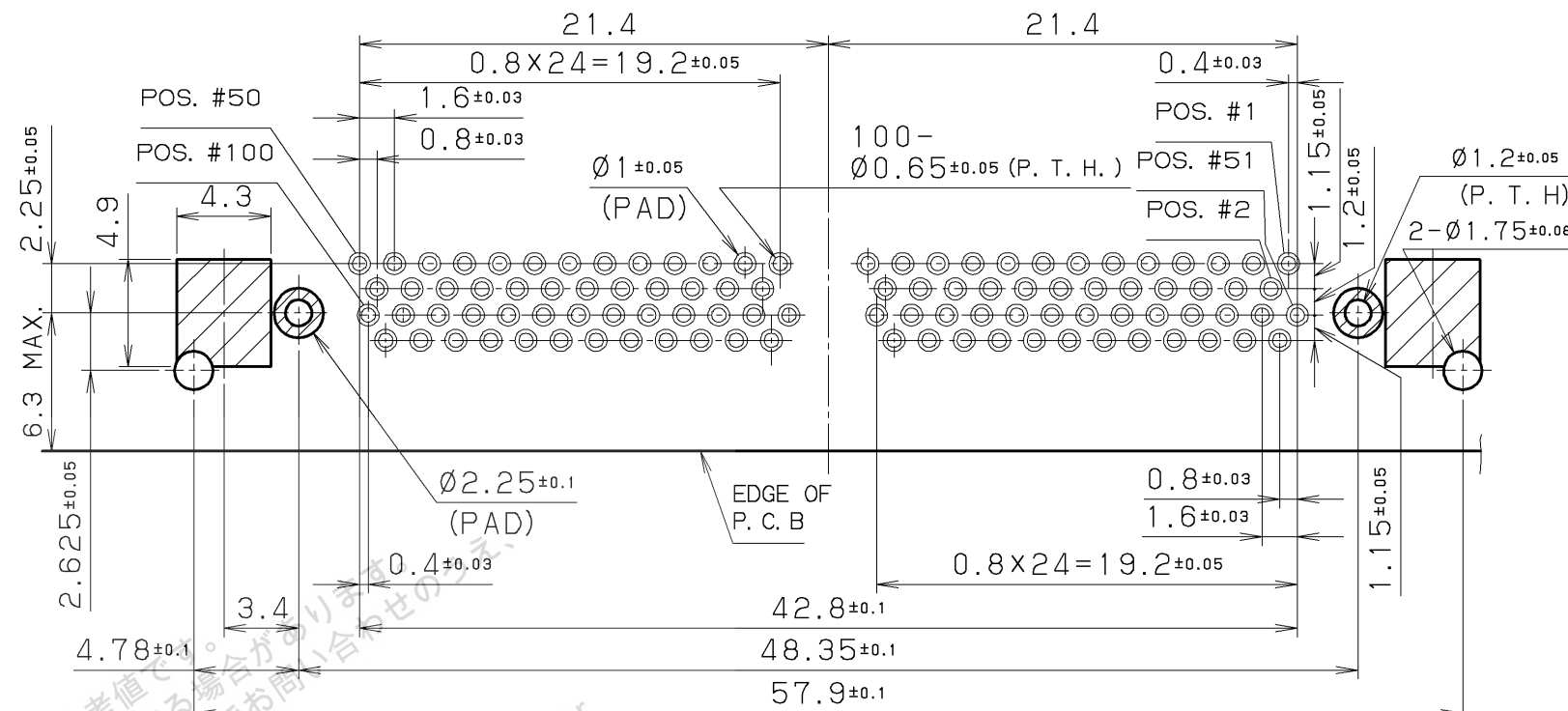
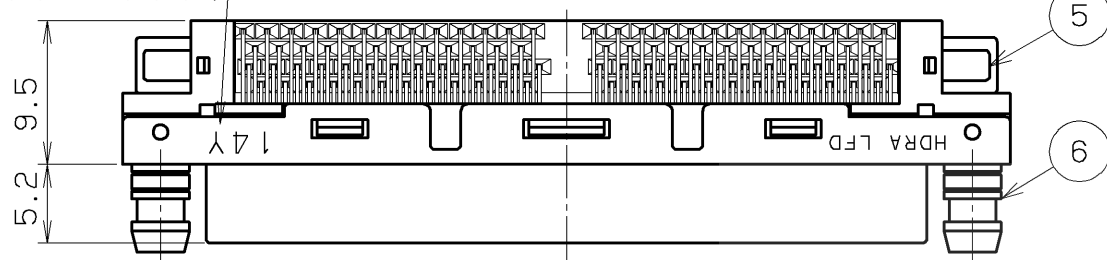


RoHS compliant

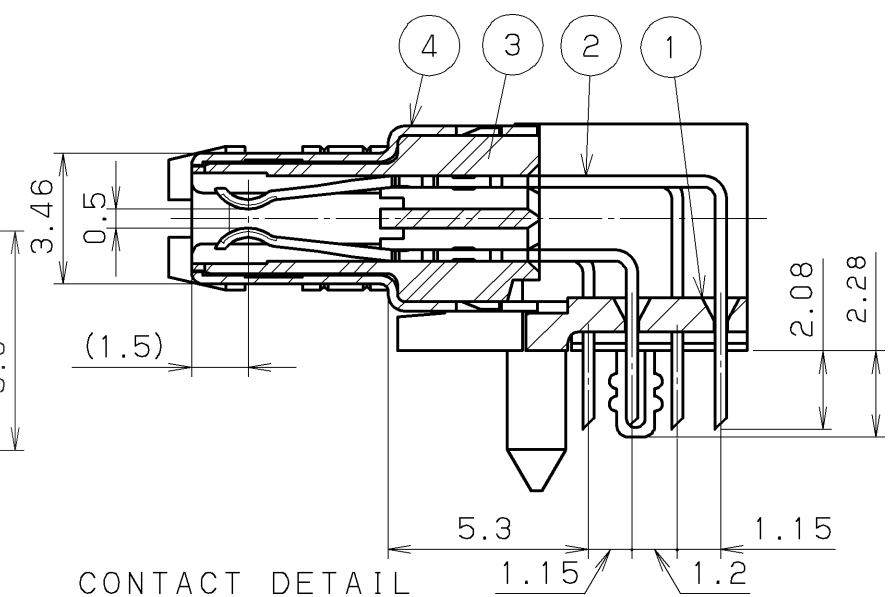
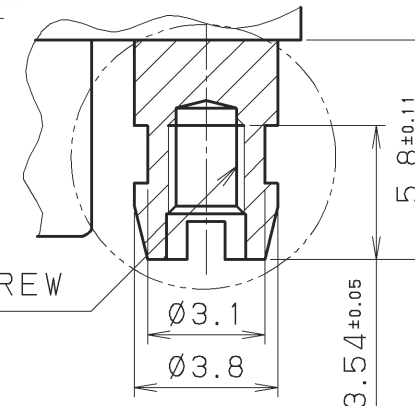
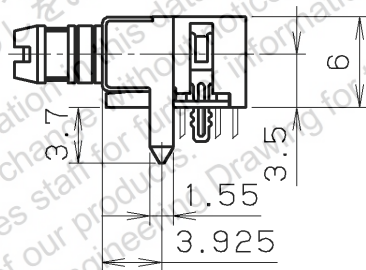
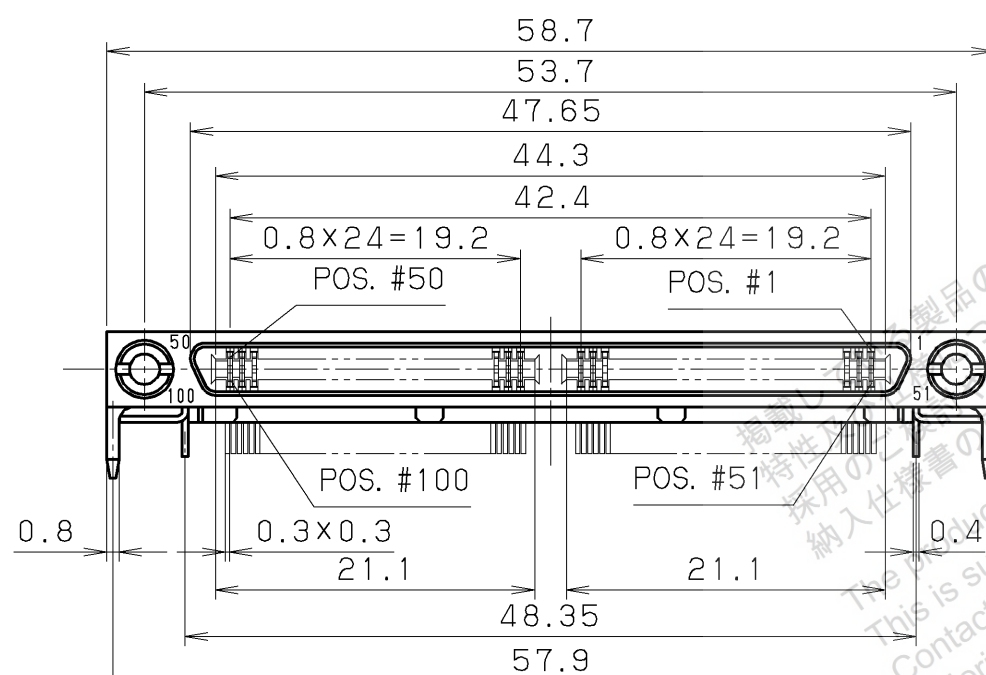
6	LOCK SCREW	STEEL	2	NICKEL PLATING	M2x0.4
5	HOLD DOWN	PHOSPHOR BRONZE	2	NICKEL PLATING	
4	SHELL	STEEL	1	NICKEL PLATING	
3	INSULATOR	PA9T	1		UL94V-0 BLACK
2	CONTACT	PHOSPHOR BRONZE	100	SEE NOTE 1	
1	BRACKET	PPS	1		UL94V-0 BLACK

LTR.	DATE	BY	REV.	DESCRIPT	No.	PART NAME	MATERIAL	QTY	FINISH	NOTE	
	DATE		SCALE		UNIT	3RD. A. P	HONDA TSUSHIN KOGYO CO., LTD.				
	Sep. 21, 2007		2 / 1		mm (INCH)						
	APP. DATE&REV.										
	DR.	DE.	CHK.	CHK.	APP.	NAME	0.8mm SPACING 100 POS. R/A FEMALE CONNECTOR				
	Y. KATO	Y. KATO			C. NUNOKAWA	PART NO.	HDRA-EC100LFDT-SL+			REV. A	

14Y
YEAR (2014)
MONTH
(1, 2, 3...9, X, Y, Z)
DATE CODE INDICATION



RECOMMENDED P. C. B. LAYOUT (t=1.6)
(MOUNT SIDE VIEW) PAD



NOTE #1. CONTACT PLATING
CONTACT AREA: Pd/Ni 0.5µm+GOLD 0.1µm MIN.
TERMINAL AREA: GOLD 0.05µm
ALL OVER NICKEL PLATED.

RoHS compliant

6	LOCK SCREW	STEEL	2	NICKEL PLATING	M2x0.4
5	HOLD DOWN	PHOSPHOR BRONZE	2	NICKEL PLATING	
4	SHELL	STEEL	1	NICKEL PLATING	
3	INSULATOR	PA9T	1		UL94V-0 BLACK
2	CONTACT	PHOSPHOR BRONZE	100	SEE NOTE 1	
1	BRACKET	PPS	1		UL94V-0 BLACK

LTR.	DATE	BY	REV.	DESCRIPT	No.	PART NAME	MATERIAL	QTY	FINISH	NOTE
	Nov. 25, 2014		2 / 1			3RD. A. P				
APP. DATE & REV.						HTK HONDA TSUSHIN KOGYO CO., LTD.				
DR.	DE.	CHK.	CHK.	APP.	NAME		0.8mm SPACING 100 POS. R/A FEMALE CONNECTOR			
A. TASHIRO	A. TASHIRO	K. OOKU		Y. KATO	PART NO.		HDRA-EC100LFDT-SLD+ REV.			