

PART No.	L1	L2	PANEL THICKNESS	FINISH OF THE THREAD	APPLICABLE CONNECTOR
HDR-E14LMY-SL-02	6.1	4.9	0.5	NOTE. #2	HDR SERIES
HDR-E14LMY-SL-02A	5.1	5.9	1.5	————	
HDR-E14LMY-SL-02B	5.6	5.4	1.0	————	
HDR-E14LMY-SL-02C	4.6	△4.4	△0.8	NOTE. #3	HDRA SERIES
△10 HDR-E14LMY-SL-02C1	4.6	4.4	0.8	NOTE. #2	
△2 HDR-E14LMY-SL-02D	5.2	4.2	0.2	NOTE. #3	
△8 HDR-E14LMY-SL-02E	5.8	5.2	0.8	————	HDR SERIES
△6 HDR-E14LMY-SL-02F	5.4	4.0	0	————	HDRA SERIES
△9 HDR-E14LMY-SL-02FA	5.4	5.6	1.2	————	HDR SERIES
△7 HDR-E14LMY-SL-02G	6.51	4.47	0.8	————	HDRA LMD
△9 △7 HDR-E14LMY-SL-02J	5	6	1.6	————	HDR SERIES

NOTE.

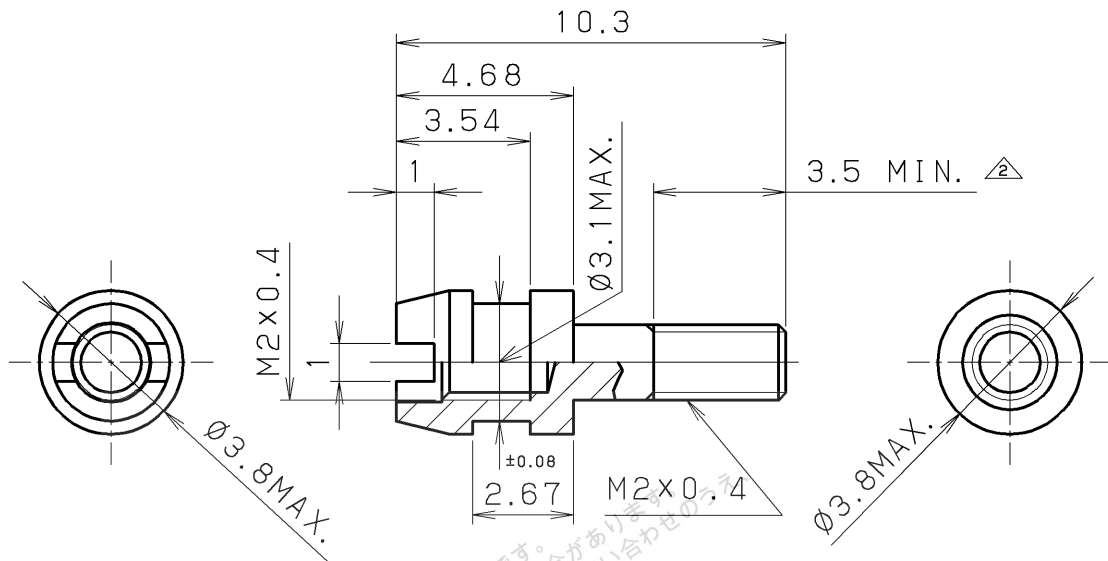
1. APPLICABLE CONNECTOR COVER
 HDR SERIES: HDR-E () LP ()
 HDRA SERIES: HDRA-E68LP ()
 HDRA-E68SLP ()

2. SEALING MATERIAL IS PRE-APPLIED TO THE THREAD FOR THE PREVENTION OF SCREW LOOSENESS.

3. ADHESIVE IS PRE-APPLIED TO THE THREAD FOR THE PREVENTION OF SCREW LOOSENESS.

△11	SEP. 6, 2011	Y. K.	REVISE
△10	MAR. 5, 2009	H. A.	ADD P/N AND NOTE.
△9	AUG. 26, 2004	Y. K.	ADD P/N.
△8	AUG. 16, 2004	Y. K.	ADD P/N.
△7	NOV. 21, 2002	Y. K.	ADD P/N.
△6	JUN. 15, 2001	Y. K.	ADD P/N.
△5	MAR. 26, 2001	Y. K.	ADD P/N.
△4	JUN. 28, 2000	Y. K.	NOTE.
△3	SEP. 1, 1999	Y. K.	NOTE.
△2	DEC. 1, 1998	H. A.	ADD P/N.
△1	AUG. 7, 1998	Y. K.	DIM.

LTR.	DATE	BY	REV.	DESCRIPT	No.	PART NAME	MATERIAL	QTY	FINISH	NOTE
						LOCK SCREW	STEEL		NICKEL PLATING	
DATE						HONDA TSUSHIN KOGYO CO., LTD.				
SEP. 9, 1996										
SCALE										
5/1										
UNIT										
mm (INCH)										
3RD. A. P										
APP. DATE & REV.										
DR.						NAME				
DE.						LOCK SCREW FOR HDR/HDRA SERIES CONNECTOR (RoHS)				
CHK.						PART NO.				
CHK.						HDR-E14LMY-SL-02 ()				
APP.						REV.				
Y. KATO						11M				
Y. KATO										
—										
C. NUNOKAWA										
C. NUNOKAWA										

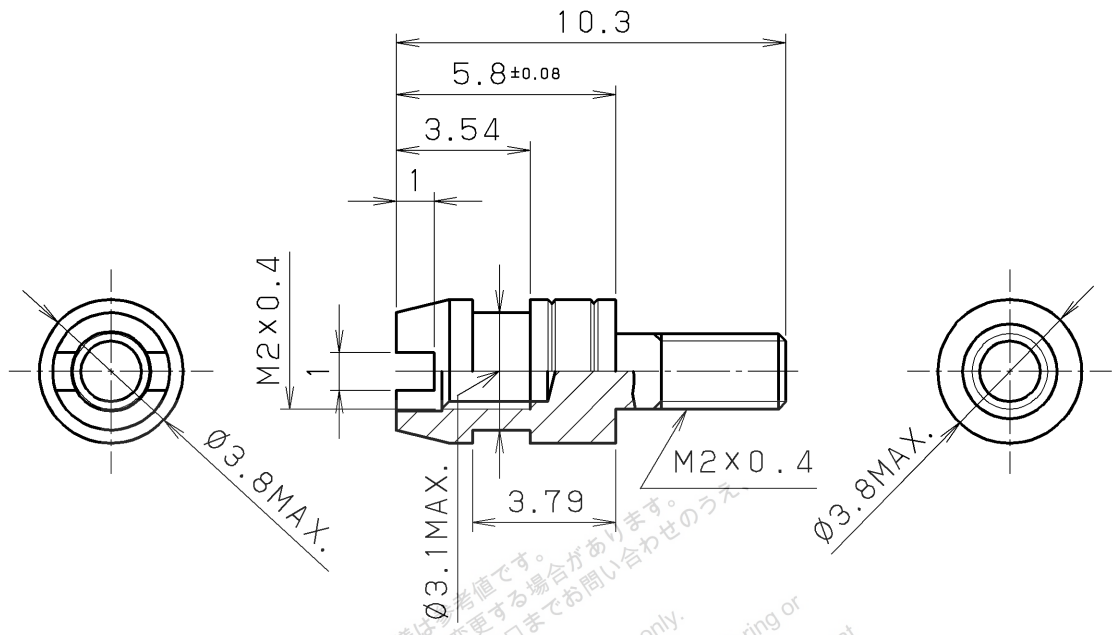


PANEL AND/OR WASHER
THICKNESS: 1.12 ± 0.08

掲載している製品の特性及び仕様は参考値です。
 特性及び仕様については、予告無く変更する場合があります。
 採用のご検討や注文の際は弊社担当窓口までお問い合わせのうえ
 納入仕様書の取り出しをお願いします。
 The product information in this data is for reference only.
 This is subject to change without notice.
 Contact our sales staff for information before considering or
 ordering any of our products.
 Please request Engineering Drawing for the most current and accurate
 design information.

HTK

△									
△	Oct. 27 2005	Y. K	Added dim.			△		△	
△	OCT. 18 1999	Y. K	MATERIAL, FINISH		LOCK SCREW	STEEL		Ni-Plating	
LTR.	DATE	BY	REV. DESCRIPT	No.	PART NAME	MATERIAL	QTY	FINISH	NOTE
DATE AUG. -8 1996		SCALE 5/1		UNIT mm (INCH)	3RD. A. P	HONDA TSUSHIN KOGYO CO., LTD.			
APP. DATE&REV.					NAME		LOCK SCREW FOR HDRA SERIES CONNECTOR		
DR.	DE.	CHK.	CHK.	APP.	PART NO.		HDRA-E68LFD-7		REV. 2B
Y. KATO	Y. KATO	—	C. NUNOKAWA	H. EBIHARA					

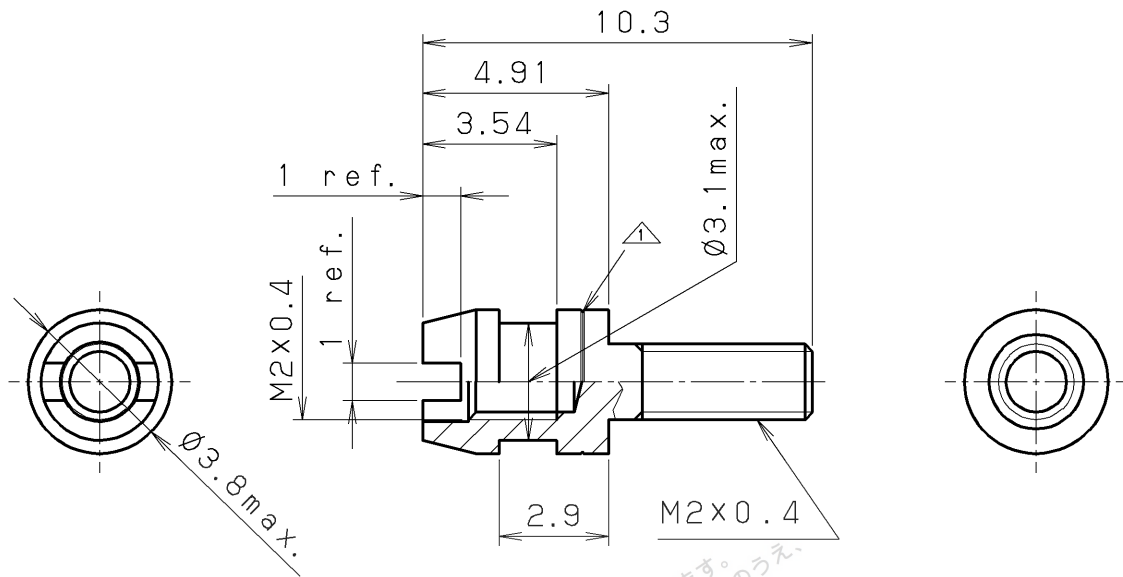


掲載している製品の特性及び仕様は参考値です。
 特性及び仕様については、予告無く変更する場合があります。
 採用のご検討やご注文の際は弊社担当窓口までお問い合わせのうえ
 納入仕様書の取り交わしをお願いします。

The product information in this data is for reference only.
 This is subject to change without notice.
 Contact our sales staff for further information before considering or
 ordering any of our products.
 Please request Engineering Drawing for the most current and accurate
 design information.

HTK

△3										
△2										
△1					LOCK SCREW	STEEL		Ni-Plating		
LTR.	DATE	BY	REV.	DESCRIPT	No.	PART NAME	MATERIAL	QTY	FINISH	NOTE
DATE AUG 10 1999		SCALE 5/1		UNIT mm (INCH)	3RD. A. P	HONDA TSUSHIN KOGYO CO., LTD.				
APP. DATE&REV.						NAME		LOCK SCREW FOR HDRA SERIES CONNECTOR		
DR.	DE.	CHK.	CHK.	APP.	PART NO.		HDRA-E68LFD-7C			
Y. KATO	Y. KATO	—	C. NUNOKAWA	H. EBIHARA						

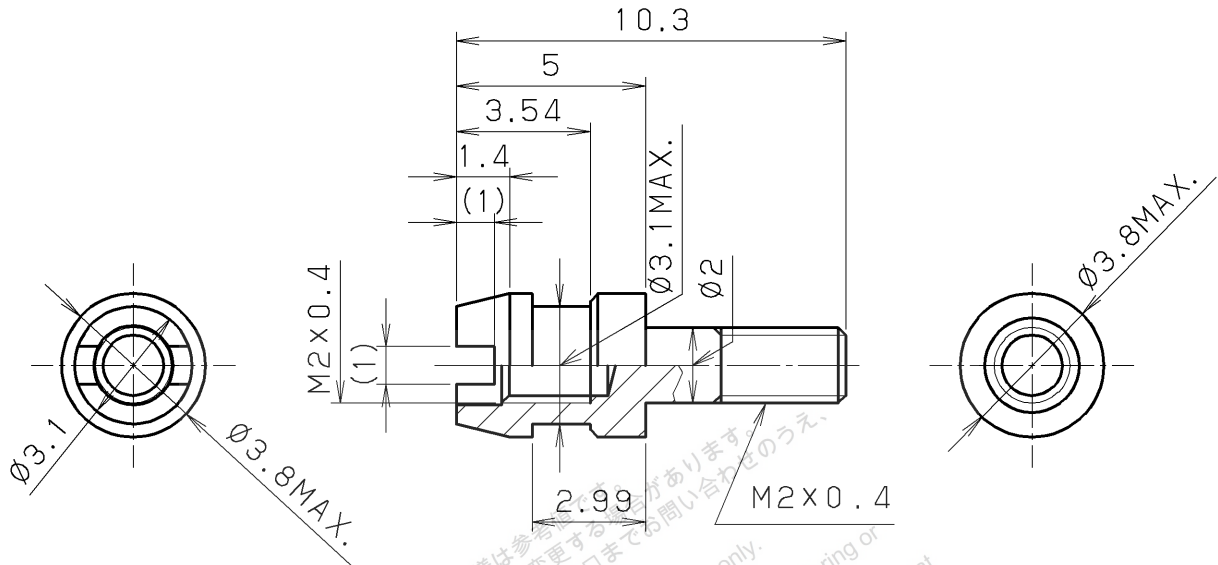


Panel and/or washer thickness: 0.89 ± 0.08

掲載している製品の特性及び仕様は参考値です。
 特性及び仕様については、予告無く変更する場合があります。
 採用のご検討やご注文の際は弊社担当窓口までお問い合わせのうえ、
 納入仕様書の取り交わしをお願いします。
 The product information in this data is for reference only.
 This is subject to change without notice.
 Contact our sales staff for further information before considering or
 ordering any of our products.
 Please request Engineering Drawing for the most current and accurate
 design information.

HTK

△3										
△2										
△1	Dec. 8, 2008	H. A.	Changed shape.		Lock screw	Steel		Ni-Plating		
LTR.	DATE	BY	REV.	DESCRIPT	No.	PART NAME	MATERIAL	QTY	FINISH	NOTE
DATE Feb. 23, 2000		SCALE 5/1		UNIT mm (INCH)	3RD. A. P	HONDA TSUSHIN KOGYO CO., LTD.				
APP. DATE&REV.						NAME		Lock screw for HDRA series connector (RoHS)		
DR.	DE.	CHK.	CHK.	APP.	PART NO.		HDRA-E68LFD-7E		REV. 1B	
H. AIZAWA	H. AIZAWA	K. TAKAHASHI	—	K. KASAI						



PANEL AND/OR WASHER
THICKNESS: 0.8 ± 0.08

掲載している製品の特性及び仕様は参考資料として提供されています。特性及び仕様については、予告無く変更する場合があります。採用のご検討やご注文の際は弊社担当窓口までお問い合わせのうえ、納入仕様書の取り出しをお願いします。
The product information in this data is for reference only. This is subject to change without notice. Contact our sales staff for ordering any of our products. Please request Engineering Drawing for the most current and accurate design information.



③										
②										
①					LOCK SCREW	STEEL		Ni-Plating		
LTR.	DATE	BY	REV.	DESCRIPT	No.	PART NAME	MATERIAL	QTY	FINISH	NOTE
	DATE 2007.03.1		SCALE 5/1	UNIT mm (INCH)	3RD. A. P	HONDA TSUSHIN KOGYO CO., LTD.				
APP. DATE&REV.						NAME	LOCK SCREW FOR HDRA SERIES CONNECTOR			
DR.	DE.	CHK.	CHK.	APP.		PART NO.	HDRA-E68LFD-7F	REV.		
Y. KATO	Y. KATO	—	—	K. KASHIO						