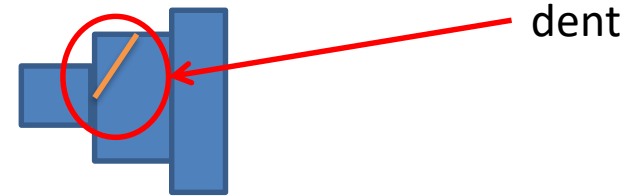
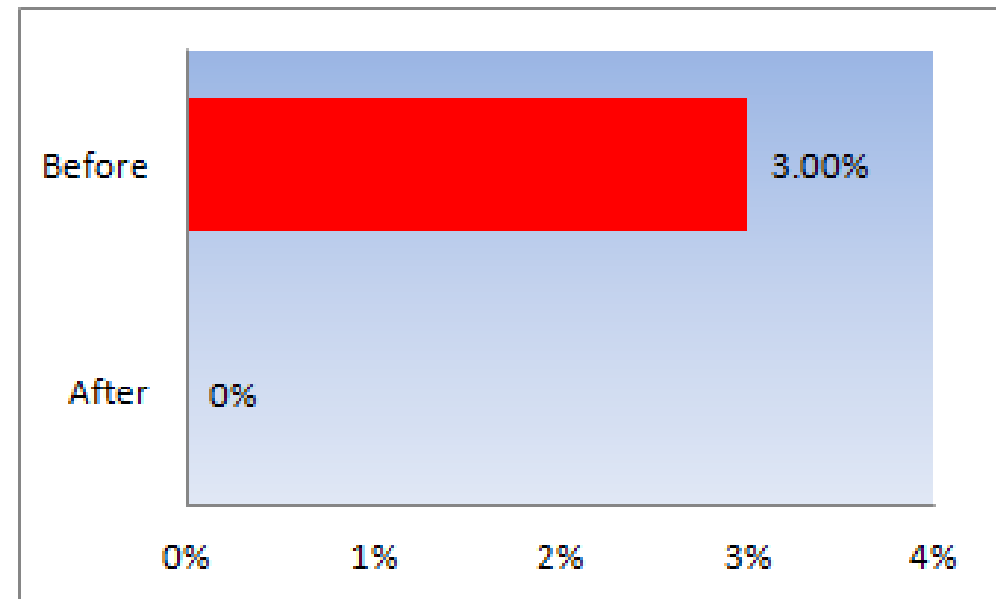


## Rate comparison of dent occurrence in back chuck 6

(Product Image)



【 Occurrence rate before/after Wavy Nozzle installation】



→ Solving dent occurrence

- ✓ Machine: NC lathe(C : L16)
- ✓ Coolant: Oil (JIS N3-8)
- ✓ Material: SUS303
- ✓ W/N Mode : Sweep
- ✓ Processing: OD
- ✓ Product Size
  - Length: 7mm
  - Diameter :  $\phi 5.5$